

THINK PARTS THINK TORNOS



## MULTIALPHA 8x28

Multispindle automatic lathe with  
parallel numerical control

# MULTIALPHA

**MultiAlpha offers you a productivity and flexibility unequaled today, with 8 spindles and up to 2 counter-spindles each mounted on a 3 axes slide.**



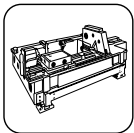
## Simplicity and flexibility

- Easy programming thanks to TB-DECO Software
- Twin and independent back operations\*
- 2 numeric manipulators\*
- Integral palletization\*
- Great chip evacuation thanks to a shorter slide\*
- Chucker\*



## Performance

- 8 motorized spindles running at independent speeds
- High precision
- Complete manufacture of complex components
- PC control\*



## Rigidity

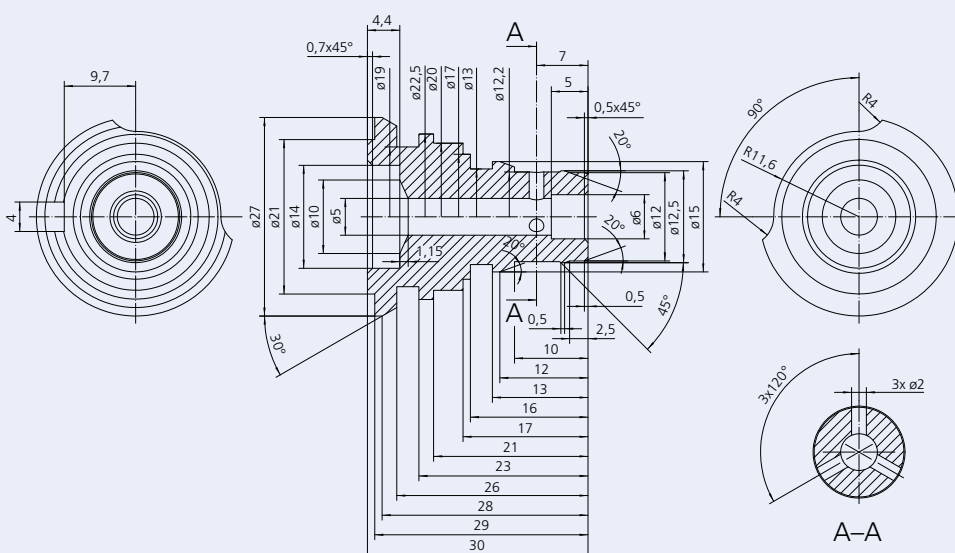
- Construction as verified by quality of finite elements
- High output

\* Optional.

## Machining example MultiAlpha 8x28

Material: 316L (1.4404) Stainless Steel, Ø 20

Production: 25 sec./piece



- External milling achieved by transmit function

# PRESENTATION



To allow its clients to remain highly competitive when machining complex parts, Tornos is now offering the complete machining solution. The MultiAlpha allows operators to complete a maximum number of parts on the machine, without entailing secondary operations on

additional equipment. This is achieved with a very competitive cycle time, thanks to the double counter-spindle, which reduces back operating time by half and to the parts handling devices, which provides careful part evacuation!



# 8 MOTORIZED SPINDLES RUNNING AT INDEPENDENT SPEEDS

**Benefit:** Ideal cutting speed at all times!

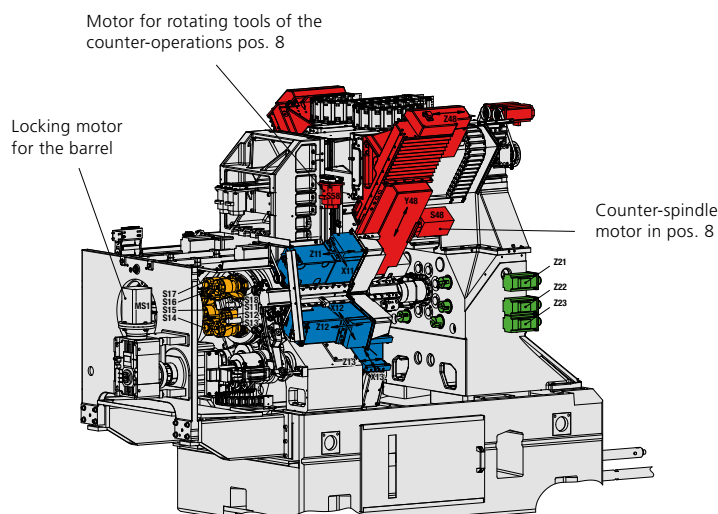
The new MultiAlpha range is supplied with the latest generation motorized spindles and is the most powerful machine in its category. Considering the experience gained in the technology of “motorized spindles”, our engineers pushed the power that could be obtained with this method to its very limits. This means that all types of machining operations are now within reach.

## Advantages

- Optimum speed for each position, depending on the type of machining operation.
- Stopping and positioning on each spindle.
- Maximum exploitation of new cutting tool technologies.
- Exceptional flexibility.
- Uncompromised productivity.

Each position can be used as a C axis, meaning that all types of operation, such as milling or positioned cross drilling can be carried out at all times, with all spindles. The spindles can all be synchronised at an angle, meaning that positioned operations can be executed on several stations (for example, transversal drilling on one station and tapping on another).

This means that customers have a choice of using a machine that actually best meets their requirements. Where a company has a machine fleet, this would mean that it could deploy additional multispindle machines operating according to the same concept. The overriding aim is to use the most efficient machine in terms of cost and productivity, based on the parts being manufactured.



# MULTIALPHA 8x28





# TWIN BACK OPERATIONS

**Benefit:** Completing more complex parts through multiple back-operations machining runs!

Parts have become more complex and sophisticated. Therefore additional back when machined in back-operation mode.

## Operating principle

In order to face up to the more stringent machining requirements at this level, Tornos has fitted two counter-spindles. These grip the parts during cut-off and then execute operations such as turning, drilling, milling, etc. This is carried out in parallel with the main spindle operations! This concept allows the time spent on counter-operations to be halved.

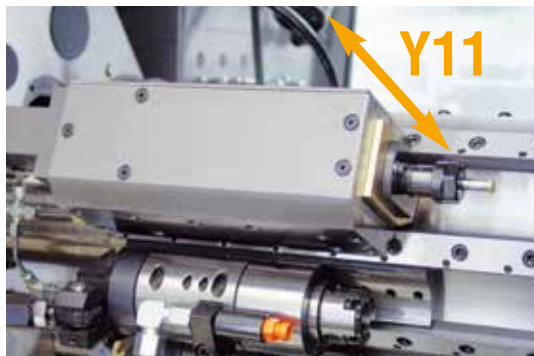
Thanks to the independent motors of the counter-spindles and long travel in Y and Z, the MultiAlpha is capable of unequalled machining on the back side of the part.

Because the machine has twin counter-spindles, this consequently reduces back-operation cycle time.

Because of its flexible system, up to 5 tools can be fitted vertically or horizontally, with several combinations for executing back-operations.

The counter-spindle motorization can drive 3 tools per position, but you also have the facility of fitting high-frequency drills or other solutions! Coolant can be supplied to all tools to insure machining conditions.





### Advantages

- 2 x 5 tools to execute extensive back-operations, with cycle times cut by half.
- Carries out counter-operations with 3 CNC axes.
- Flexible system allowing the tools to be fitted horizontally or vertically, fixed or turning, with central lubrication.

This concept of many additional back-working operations opens up many new possibilities in finishing parts on a multispindle machine. This system combines the versatility currently only offered by single spindle machines with the productivity of a multispindle.

The versatility of the MultiAlpha goes yet further with its 8 motorised spindles and 2 counter-spindles, each of which can work with 5 tools. The MultiAlpha allows its operators to envision new opportunities...

The back-operation system on the MultiAlpha is flexible, meaning that it is also possible to use a machine with only one single counter-spindle.



## 2 NUMERIC PART MANIPULATORS

**Benefit:** Controlled part extraction !



Precision and the visual appearance of the parts being manufactured in today's market are becoming more and more stringent. Dents, marks and flaws are no longer permitted. In order to meet these requirements, Tornos developed a dual parts handling system, which picks up the parts and conveys them directly to the machining area and then conveys them outside of the machining area.

### **Advantages**

- All parts are handled with care.
- No more flaws caused by impact.
- Facility of transferring the parts to another machine.

The system can be adapted and used for various applications, such as:

- Removing the part away from the machining area to a pre-cleaning station.



# INTEGRATED PALLETIZATION

**Benefit:** Easy to incorporate in a complete industrial process!



Many leading companies automated their processes to a maximum because of labour costs and the demand for very high quality output. The MultiAlpha was developed by incorporating a palletization system. Very often, commercial palletization systems are limited at machine interface level and therefore have to be assembled to the side of the machine, which takes up a lot of space. To overcome this problem, Tornos located the integral palletization system between the machine and control cabinet thereby optimising integration and saving on space. Large pallets of 400 x 600 mm were incorporated as standard to enhance autonomous operation.

## **Advantages**

- Integrated palletization in the machine.
- Reduced surface area.

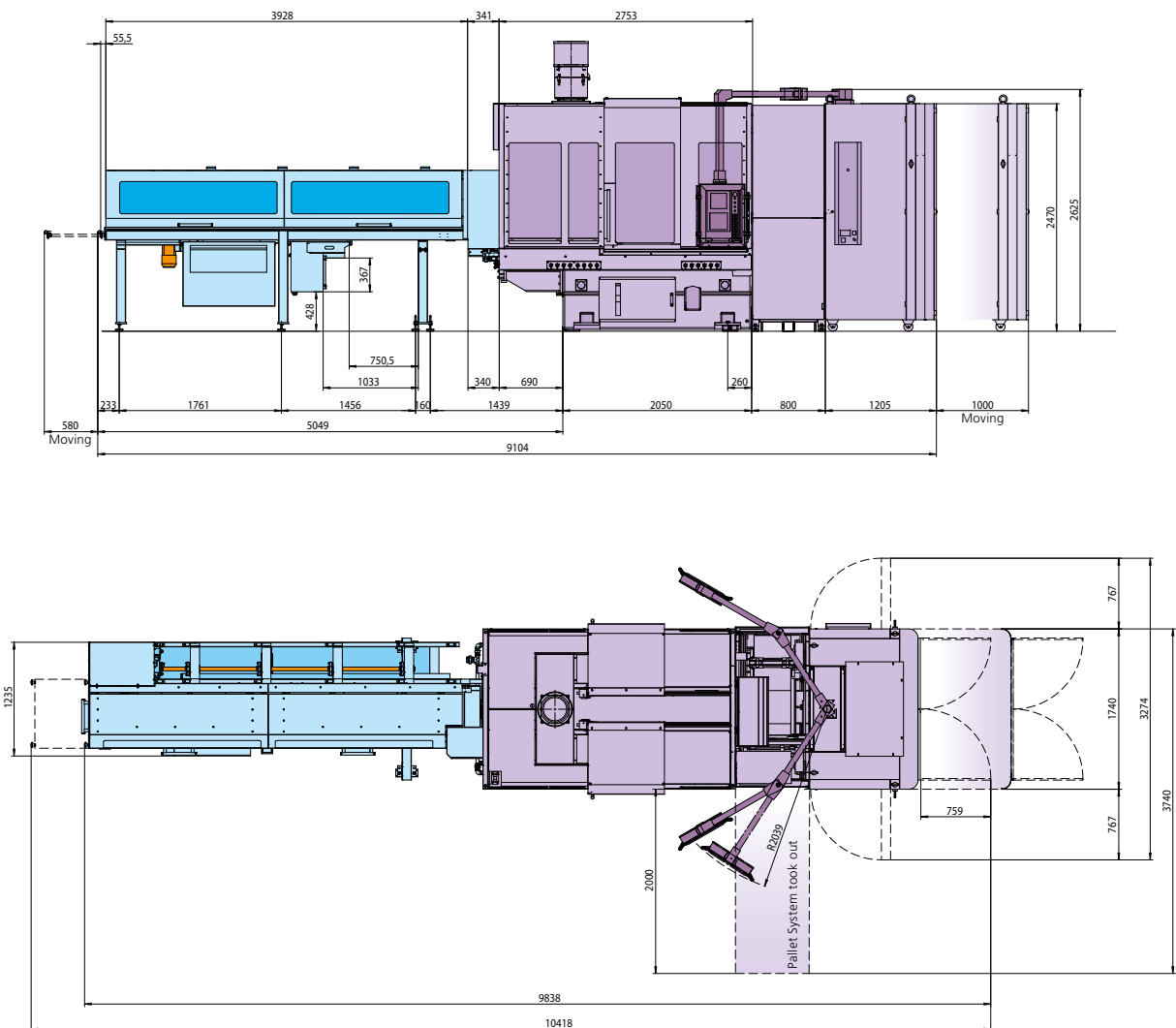
## **The general idea of palletization**

Once the parts are loaded onto pallets, they can pass directly to a washing system.

## MULTIALPHA

### Key benefits

- Motorized spindle (= ideal speed for each position).
- Twin counter-spindles (highly complex parts at high output).
- Controlled part unloading.
- Integrated palletizing.



TECHNICAL SPECIFICATIONS	MultiAlpha	8x28
Weight (with oil)	kg	~ 12'000
Cutting oil tank capacity	l	up to 2,000
Installed power	kVA	65
Pneumatic group pressure	bars	6

# TECHNICAL CHARACTERISTICS

TECHNICAL SPECIFICATIONS	MultiAlpha	8x28
Bar passage	mm	26 (28)
Max. component length	mm	90 (140)
Max. speed of motorspindles	rpm	8'000
Power of motorspindles	kW	11.6 (15.4)
Torque rating of motorspindles	Nm	16 (20.2)
Max. speed of counter-spindle	rpm	8'000
Power of motor/counter-spindle	kW	3.7 (9.5)
Motor torque of counter-spindle	Nm	8.3 (24)
Max. speed of motorquill	rpm	8'000
Power rating of motorquill	kW	5.3 (7.5)
Torque rating of motorquill	Nm	7 (9.2)
Max. speed of high-power motorquill	rpm	8'000
Power rating of high-power motorquill	kW	10.6 (15)
Torque rating of high-power motorquill	Nm	14 (18.4)
Max. speed of tool drive motor for counter-operation	rpm	6'000
Power of tool drive motor for counter-operation	kW	1.9 (4.7)
Torque of tool drive motor for counter-operation	Nm	5.3 (21.2)
Number of slide axes		25 (30)
Number of rotary axes		9 (13)
Transverse slide stroke X1	mm	50
Transverse slideway stroke Z1	mm	80
Transverse slideway stroke Z1	mm	80
Stroke of front unit Z2	mm	200
Stroke of cutting slideway	mm	(X17, X18) 40
Stroke of slideway for counter-operation	mm	75
Stroke of slideway for counter-spindle	mm	280
Stroke of slideway on counter-spindle	mm	200 (450)
Number of fixed tools for counter-operation		5 (10)
Number of rotating tools for counter-operation		3 (6)
Cooling of the spindles		Oil
NC unit		Fanuc 30ib
Programming system		TB-DECO

**TORNOS SA**

Rue Industrielle 111  
CH - 2740 Moutier  
T +41 (0)32 494 44 44  
F +41 (0)32 494 49 03  
contact@tornos.com  
www.tornos.com

**TORNOS TECHNOLOGIES**
**DEUTSCHLAND GmbH**

Karlsruher Str. 38  
D - 75179 Pforzheim  
T +49 (0)7231 / 910 70  
F +49 (0)7231 / 910 750  
contact-ttd@tornos.com

**TORNOS TECHNOLOGIES**
**FRANCE**

Boîte postale 330  
St-Pierre en Faucigny  
F - 74807 La Roche  
s / Foron Cedex  
T +33 (0)4 50 038 333  
F +33 (0)4 50 038 907  
france.contact@tornos.com

**TORNOS TECHNOLOGIES**
**IBÉRICA**

Pol. Ind. El Congost  
Avda. St Julià, 206 Nave 8  
E - 08403 Granollers  
T +34 93 846 59 43  
F +34 93 849 66 00  
comercial.tti@tornos.com

**TORNOS TECHNOLOGIES**
**ITALIA SRL**

Via Cesare Pavese 21  
I - 20090 Opera / MI  
T +39 02 57 68 15 01  
F +39 02 57 68 15 230  
italia.contact@tornos.com

**TORNOS TECHNOLOGIES**
**US CORPORATION**

840 Parkview Boulevard  
US - Lombard, IL 60148  
T +1 630 812 2040  
F +1 630 812 2039  
info-us@tornos.com  
www.tornos.us

**TORNOS TECHNOLOGIES**
**UK LTD**

Tornos House  
Whitwick Business Park  
Coalville  
UK - Leicestershire LE67 4JQ  
T +44 (0) 1530 513100  
F +44 (0) 1530 814212  
sales@tornos.co.uk

**TORNOS TECHNOLOGIES**
**POLAND Sp. z o.o.**

Ul. Spółdzielcza 37-39  
55-080 Kąty Wrocławskie  
Poland  
T +48 71 33 85 618  
F +48 71 33 85 617  
poland.contact@tornos.com

**TORNOS TECHNOLOGIES**
**(Shanghai) LTD**

Hui Feng Creativity Garden  
Feng Yu Building, 1-2F  
No. 239, Xitai Rd, Xu Hui District  
CN - Shanghai 200232  
T +86 21 6235 1235  
F +86 21 6235 1938  
china.contact@tornos.com

**TORNOS DONGGUAN OFFICE**

SE1-29, Changrong International  
Machinery Hardware Square, No.56  
Middle ZhenAn Road, Wusha,  
ChangAn Town, Dongguan City,  
Guandong Province, 523859  
T +86-769-8533 7266  
F +86-769-8533 7265  
china.contact@tornos.com

**TORNOS BEIJING OFFICE**

Rm.1706, Tower A  
Dongyu Office Building  
Jia #1 Shuguang Xili  
Chaoyang District  
CN - Beijing 100028  
T +86 10 5979 8583  
F +86 10 5822 0483  
beijing.contact@tornos.com

**TORNOS SA THAILAND**
**REPRESENTATIVE OFFICE**

7th Floor, 19, Bangna -Trad Soi 34,  
Bangna -Trad KM. 3 Road.  
Bangna, Bangkok, 10260  
Thailand  
T +66 2746 8840-1  
F +66 2746 8842  
thailand.contact@tornos.com

**TORNOS TECHNOLOGIES ASIA LTD**
**MALAYSIA**
**REPRESENTATIVE OFFICE**

No. 1-1-11, Ground Floor & 1-2-11,  
First Floor, One Terrace Plus,  
Tingkat Mahsuri 4, 11900 Bayan Lepas,  
PENANG, MALAYSIA  
T +60 4 642 6562 / 4 642 6563  
F +60 4 642 6561  
malaysia.contact@tornos.com

**Conforms to the European CE/CEM Safety Standards**

This document is based on information available at the time of publication. While every effort has been made to be accurate, the information contained herein does not purport to cover all details or variations in hardware and software, nor to provide for every possible contingency in connection with installation, operation and maintenance. TORNOS SA assumes no obligation of notice to holders of this document with respect to changes subsequently made. TORNOS SA makes no representation or warranty, expressed, implied, or statutory with respect to, and assumes no responsibility for the accuracy, completeness, sufficiency or usefulness of the information contained herein. No warranties of merchantability nor fitness for purpose shall apply.