



**Application
Engineering**

PROVIDING SOLUTIONS, NOT JUST EQUIPMENT



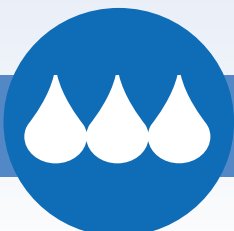
**MODULAR TO EXPAND WHEN YOU NEED TOO,
ENGINEERED TO MEET YOUR NEEDS**

AEC's GC Series Central Chiller modules offer 70-210 kW (20-60 tons) of refrigeration; available in either water or remote air-cooled models, you can assemble these modules to provide over 1,000 kW (300 tons) on your time.

These modules provide a leaving fluid temperature between 20°F to 80°F (-7°C to 30°C) utilizing the environmentally-friendly R410a refrigerant

STANDARD FEATURES

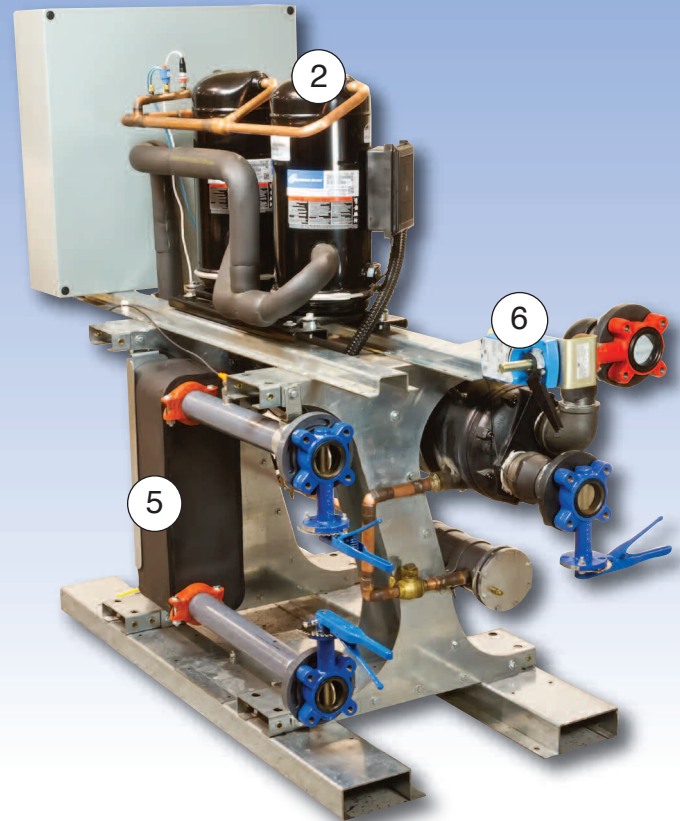
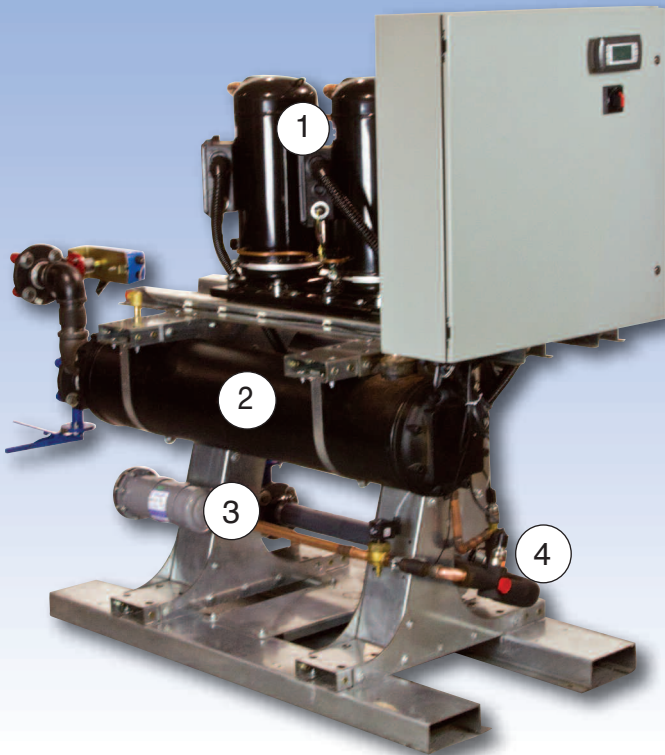
- Tandem scroll compressors
- Stainless steel brazed plate evaporators
- Shell and tube water-cooled condensers or Aluminum fin tube remote air-cooled condensers
- Electronic modulating expansion valve
- Non-ferrous process fluid piping



GC SERIES CENTRAL CHILLER

www.aecinertnet.com

Water-Cooled Module Details



1. Tandem scroll compressors with staging capability
2. Shell and tube water-cooled condenser with accessible tubes for ease of cleaning
3. Replaceable-core filter drier
4. Electronic modulating expansion valve for precise capacity control
5. Stainless steel brazed plate evaporator
6. Electronic modulating condenser water regulating valve

Standard features
available on the
Water and Remote
Air-Cooled models



High-pressure safety
high pressure
transducer

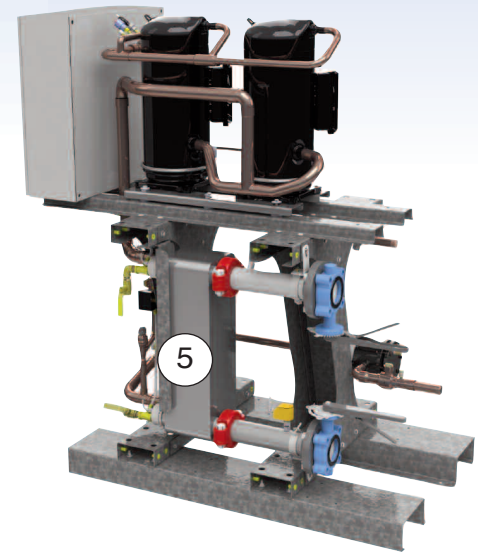
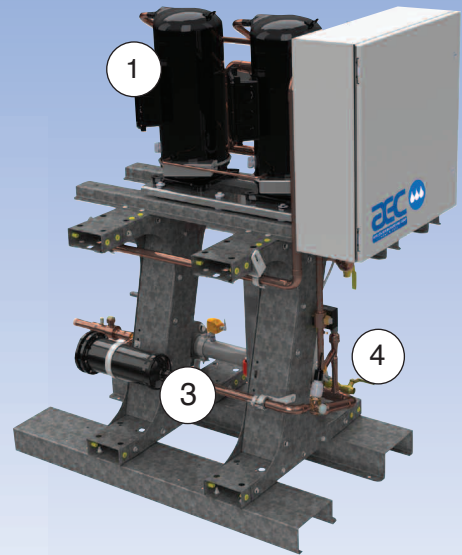
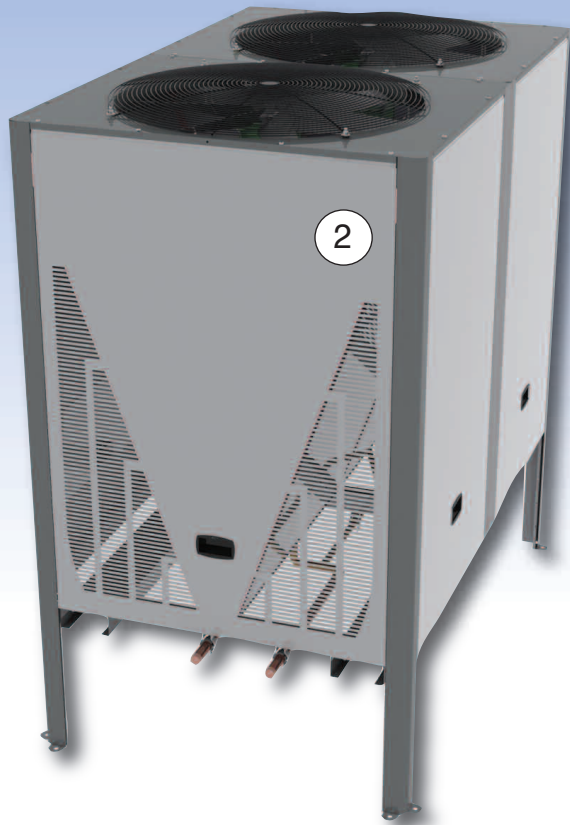


Pressure relief valve



GC SERIES CENTRAL CHILLER

Remote Air-Cooled Module Details



- 1. Tandem scroll compressors with staging capability
- 2. Aluminum microchannel remote air-cooled condenser with variable speed fan control
- 3. Replaceable-core filter drier
- 4. Electronic modulating expansion valve for precise capacity control
- 5. Stainless steel brazed plate evaporator

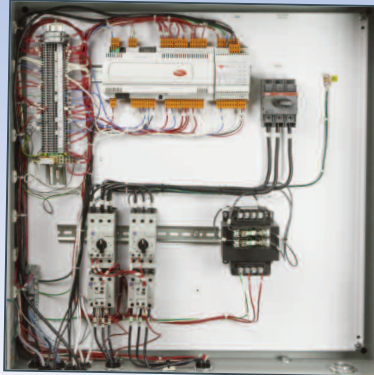


GC SERIES CENTRAL CHILLER

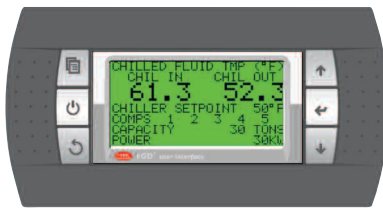
www.aecinternet.com

Control Details

At the heart of each module is the Carel pCO1 series controller. This controller, in combination with either the Basic or Advanced display, allows for accurate and repeatable control of the entire chiller. When multiple modules are installed, each controller “talks” to each other to make sure that the system is operating at the highest level. Temperatures and pressures, along with the status of each device on each module are monitored and controlled to maintain peak performance of the system.



**Electrical
sub-panel**



Main status menu



Circuit 1, analog in



Circuit 1, hour meters

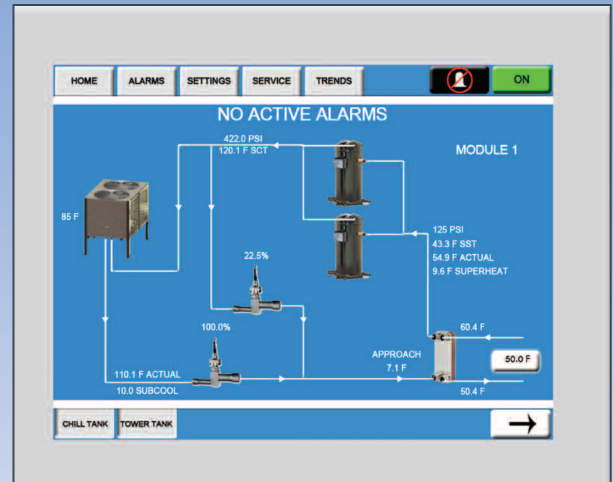
The easy-to-use Basic display, with 8 lines x 22 characters wide, will not only show the main system status in plain language, but will allow for the user to place it anywhere in their system with the magnetic back and extended cable. Press the power button, adjust the setpoint, and let the controller do the rest



GC SERIES CENTRAL CHILLER



Main status menu



Module operation



Supervisor settings

The 10 inch (245mm) Advanced display takes this system to the next level. Graphical depiction of the entire chiller, as well as the pumping system, allows the user to observe and control any part of the system with a touch of the screen.

Water-Cooled Modules

Model	Capacity ¹		Amp Draw ²	Est. Shipping Weight	
	Tons	kW		Lbs.	kgs.
GCWC70	23	80	45	950	432
GCWC90	28	100	58	965	440
GCWC105	34	118	68	1140	518
GCWC140	43	153	91	1605	730
GCWC175	54	191	106	1760	800
GCWC210	71	248	137	2065	940

1 Capacity rated at 60hz and 50°F (10°C) leaving coolant fluid temperature with 85°F (30°C) entering condenser water temperatures. For 50hz multiply by 0.83.

2 Amp draw rated at 460V/3/60. For 380V/3/50-60 multiply by 1.2.

Remote Air-Cooled Modules

Model	Capacity ¹		Amp Draw ²	Est. Shipping Weight	
	Tons	kW		Lbs.	kgs.
GCRC70	20	70	49	1075	490
GCRC90	25	90	63	1125	512
GCRC105	30	106	75	1210	550
GCRC140	40	140	97	1815	825
GCRC175	49	174	116	2025	920
GCRC210	64	225	151	2375	1080

1 Capacity rated at 60hz and 50°F (10°C) leaving coolant fluid temperature with 95°F (35°C) entering condenser water temperatures. For 50hz multiply by 0.83.

2 Amp draw rated at 460V/3/60. For 380V/3/50-60 multiply by 1.2.



GC SERIES CENTRAL CHILLER

FEATURES

- Modular installation
- Redundancy
- Future expansion
- Front-side service accessibility
- Complete system access through Advanced Display

BENEFITS

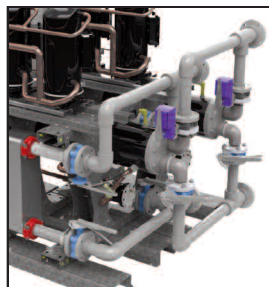
- Ease of installation of new or replacement parts in a small footprint
- Redundancy in a modular sense reduces the risk of the system losing control through losing a single critical component
- Compressor wear is handled through auto-rotation of which the compressor turns on and off based on run-time hours
- Be conservative up front, yet easy to expand to meet future needs
- Reduces time to service a single module. Reduction in time = reduction in service costs
- One location to monitor and control the entire cooling system

OPTIONS



Hot gas by-pass

- Allows for better partial load temperature control



Evaporator and water-cooled condenser manifolds

- Ease of installation
- Select right or left facing connections



GC SERIES CENTRAL CHILLER

www.aecinternet.com



AEC Global Solutions

Process chilling is just one piece of equipment that AEC can assemble into an entire solution for your global needs. We are a complete solution provider meeting the many needs of our customers. Talk to us about how we can make your cooling system a complete success.



www.aecinternet.com
aecweb@corpemail.com

AEC is committed to a continuing program of product improvement. Specifications, appearances and dimensions are subject to change without notice.

© 2011 AEC Bulletin AE3-140 Printed in USA

GC SERIES CENTRAL CHILLER



Global Headquarters:

AEC Schaumburg
1100 E. Woodfield Rd
#588
Schaumburg, IL 60173
Tel: +1 847 273 7800
Fax: +1 847 273 7804



AEC New Berlin
2900 S. 160th Street
New Berlin, WI 53151
Tel: +1 262 641 8610
Fax: +1 262 641 8651



AEC Suzhou
109 Xingpu Road SIP
Suzhou, China 215126
Tel: +86 512 8717 1919
Fax: +86 512 8717 1916



AEC Warsaw
ul.Dziakowa 115
02-234 Warszawa
Tel: + 48 22 390 9720
Fax: + 48 22 390 9724



AEC India
Regus, Level 2, Connaught Place
Bund Garden Road, Pune 41100,
India
Tel: +91 20 4014 7575/40147615
Fax: +91 93 7115 4045