

# SEVEN SERIES BESIDE-THE-PRESS GRANULATORS

# GRANULATE



## SEVEN SERIES BESIDE-THE-PRESS GRANULATORS

Perfect for injection molding operations, the versatile Seven Series provides efficient size reduction of small parts, sprues, and runners. The standard large capacity discharge bin and vacuum takeoff allow the Seven Series to integrate seamlessly into your existing material handling system. Mixed with virgin material, the consistent high quality regrind helps to minimize process waste and improves overall productivity.



Seven Series Granulator

### STANDARD FEATURES

- 210 rpm motor speed
- TEFC motor, 5 hp
- 230, 460V @ 60 Hz
- Time delay safety switch to interlock hopper and screen chamber
- Mounted ratcheting opening tool to open cutting chamber (no tools required)
- NEMA 12 control enclosure
- D2 knives; selection of 40° or 55° tip angle
- Double-walled construction on hopper and base
- Solid flywheel drive sheave
- Top-access bed knife adjusting system
- Three blade open/solid rotor with rotating end disks
- Two bed knives
- "Clear View" bin level inspection window
- Vacuum removal discharge bin
- Selection of reversible screens; hole sizes of 1/4", 5/16", 3/8", 1/2" and 5/8" available
- Reversible top feed hopper design
- Two locking, two swivel casters

### OPTIONAL FEATURES

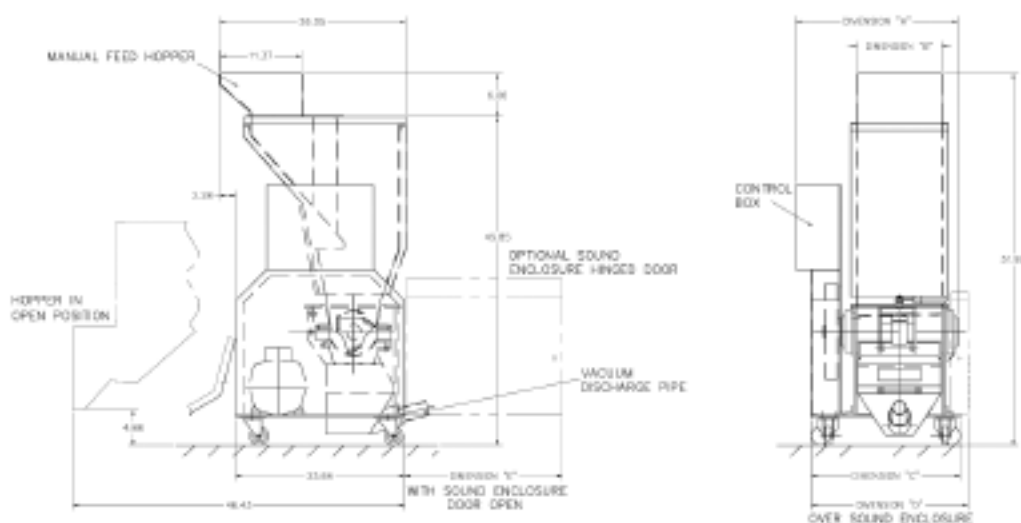
- Ultra low for sprue picker and conveyor fed under-the-press applications
- Hopper extensions for high-drop robot applications
- High base equipped with larger vacuum bin and valve sack discharge
- Wear-resistant chamber parts: hardened bed knife blocks, Astrolloy end discs and bed knife clamps, and electrolyzed screens
- 3 knife, wedge held, open, slant cut rotor with optional non-adjustable or adjustable knives
- Full sound enclosure package

# SEVEN SERIES BESIDE-THE-PRESS GRANULATORS

# GRANULATE

## SPECIFICATIONS

Model	708	712	716
Cutting Chamber Opening, in. (H x W)	6.5 x 8	6.5 x 12	6.5 x 16
Cutting Circle Diameter, in.	6.3	6.3	6.3
Open Screen Area, sq. in.	36	55	70
Average Throughput, lbs./hr	100	150	200
Bin Capacity (vacuum bin), cu. ft.	0.15	0.2	0.3
Height with robot chute, in.	51.2		
Width, in.	20.5	24.5	28.5
Depth, in.	27.5		
Average Machine Weight, lbs.	510	530	550



## DIMENSIONS

Model	Dimensions, in.				
	A	B	C	D	E
716	26.67	15.81	24.86	25.88	25.97
712	22.67	11.81	20.86	21.88	21.97
708	18.67	7.81	16.86	17.88	17.97