



GP1200 PREMIER SERIES GRANULATORS

The GP1200 Premier Series granulators offer a wide range of capabilities to handle the most demanding injection molding, blow molding and extrusion requirements. With a horsepower range from 7 1/2 to 25 HP, throughput capacities from 500 to 800 lbs./hr, and a wide range of sizes, there is a AEC granulator ideal for your specific needs. The 3-knife open slant-cut rotor with scooped wings provides for both positive feeding of bulky parts and improved airflow for cooler operation.

STANDARD FEATURES

- TEFC motor and solid flywheel drive
- Metal bin discharge
- Quick-Release hand knob access

Hopper:

- Hand, robot or conveyor operation
- Sound attenuated
- Multi-feed

Cutting Chamber:

- Offset design, 2 bed knives
- Machined, bolted and doweled
- Fully sound-attenuated to approximately 85 dBA

3-Knife Rotor:

- Open-slant cut with scooped wings
- Rotating end discs

Rotor and Bed Knives:

- D2 OEM manufactured
- Proprietary process

Removable pivoting drop-down screen and screen cradle:

- 5/16" standard, 3/16", 1/4", 3/8" and other sizes available

Controls:

- NEMA type 12 with 120V P/B 230/460V



GP1200 Premier Series Granulator
(shown with optional evacuation)

OPTIONAL FEATURES

- Special infeeds
- Level indicator
- Reduced RPM rotor speed
- Abrasion-resistant cutting chamber and rotor
- Vacuum or blower discharges
- Evacuation system

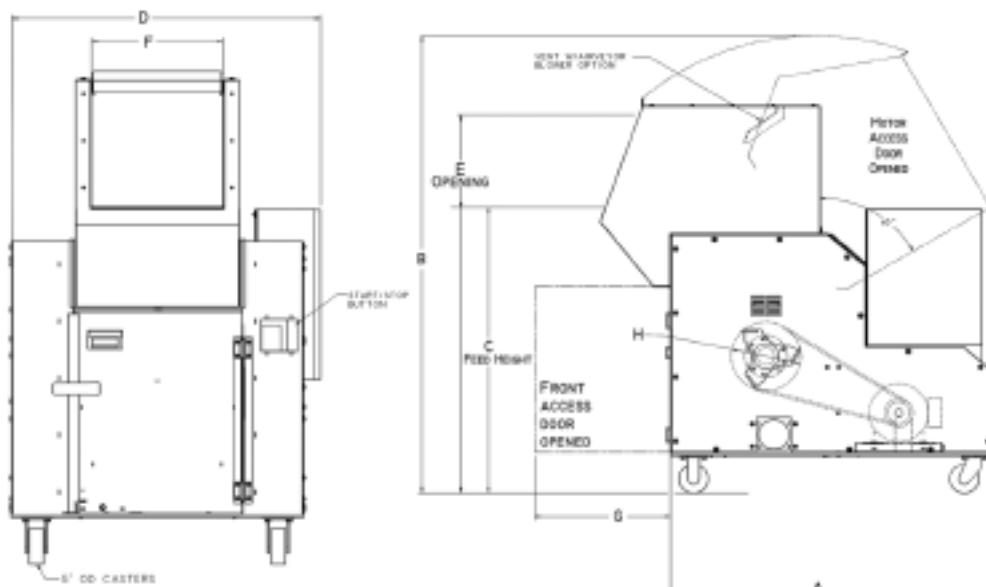
GP1200 PREMIER SERIES GRANULATORS

GRANULATE

SPECIFICATIONS

Selector Guide											
Features	Infeed	Rotor	Base		Discharge			Motor/Controls	Drive Parts	Throughput	Weight
	Tray feed Removable flap assembly Double-walled SP	3-knife open slant cut	Portable caster mount	Stationary vibration pad	Metal Bin	Airveyor 4" 5" 6"	Vacuum or Gaylord	TEFC 230/460V Start/Stop P/B Controls	Solid High-Inertia Flywheel V-belt Drive	Lbs/Hr 5/16" Screen 3-Knife Rotor (approx)	Lbs.
GP1212	Tray & Sheet	STD	STD	Optional	STD	Optional	Optional	7 1/2 - 25 HP	STD	500	1750
GP1218	Tray & Pipe							7 1/2 - 25 HP		750	2300
GP1224	Tray & Feed Rolls							10 - 25 HP		900	2850

DIMENSIONS



Specifications								
Model	A	B	C	D	E	F	G	H
GP1212	56"	80 1/4"	50 1/4"	36 3/4"	17"	12 1/4"	17 5/8"	12"
GP1218				42 3/4"		18 1/2"	23 1/2"	
GP1224				48 3/4"		24 1/4"	15" (2 doors)	