

GP800 SERIES BESIDE-THE-PRESS GRANULATORS

GRANULATE



GP800 SERIES BESIDE-THE-PRESS GRANULATORS

The GP800 Series granulators are designed for efficient beside-the-press regrind of reject components from injection molding, blow molding, and extrusion processes. Quiet-running and extremely versatile, they can be used with robot feed, conveyor feed or hand feed applications.

These sound-attenuating granulators are available in three models—GP810, 814, and 818. All provide excellent quality regrind with the added advantage of reduced maintenance costs.



STANDARD FEATURES

- *Pivoting hopper, drop-down screen cradle and machined, bolted cutting chamber simplifies cleaning and maintenance*
- *Low profile, sound-attenuated infeed system for robot, hand or conveyor feed applications*
- *HCHC knives manufactured in-house utilizing AEC's proprietary process for heat-treating ensure durability and long life*
- *Oversized solid flywheel*

OPTIONAL FEATURES

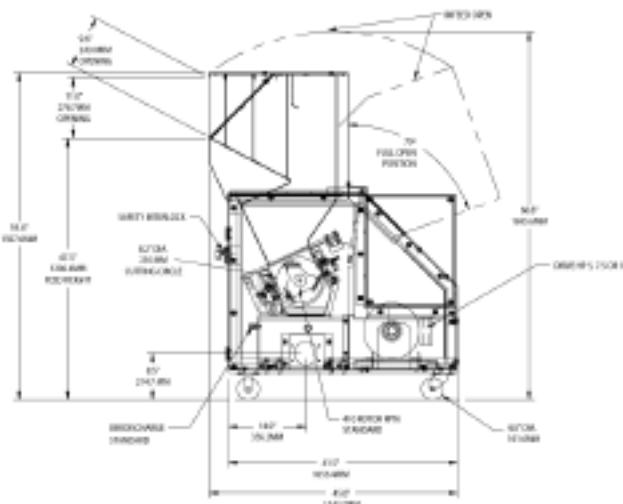
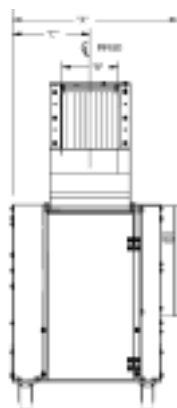
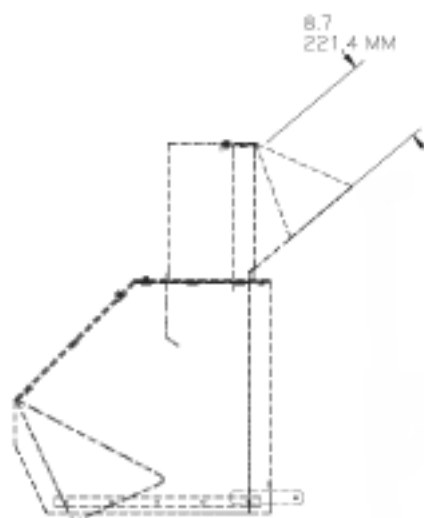
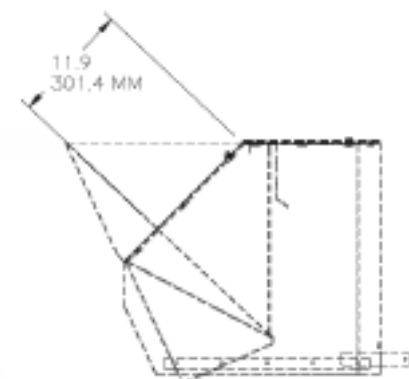
- *Motor: 7.5 to 10 HP (5.5 to 7.5 kW) TEFC motors*
- *Discharge: 1.25", 1.5", 2" or 2.5" vacuum take-off*
- *Knives: D2 components and wear-resistant package for abrasive applications*
- *Modular feed chutes*

GP800 SERIES BESIDE-THE-PRESS GRANULATORS

GRANULATE

SPECIFICATIONS

Specifications			
Model	GP810	GP814	GP818
Cutting Circle	8.2" dia. (210mm)		
Avg Throughput (lbs/hr)	123	172	221
Cutting Chamber	8" x 10"	8" x 14"	8" x 18"
Rotor Knives	3-knife open-scooped with rotating end discs		
Discharge	Manual bin standard		
Motor	5HP (3.75 kW) TEFC standard		
Base	Full machine sound enclosure with casters		
Electrical Components	Start/stop button, with complete safety interlocks		
Controls	NEMA type 12		
Feed Height (manual chute)	47.5" (1206mm)		
Feed Height (front robot/conveyor chute)	59.1" (1502mm)		
Feed Height (rear robot/conveyor chute)	68.6" (1742mm)		
Overall Height (manual chute model)	59.4" (1507mm)		
Overall Length	45.0" (1144mm)		
Overall Width	30.3" (770mm)	34.3" (871mm)	38.3" (973mm)
Weight	1220 lbs	1400 lbs	1610 lbs



Dimensions				
Machine Model	A	B	C	D
810	30.3" (770mm)	10.2" (260mm)	14.3" (363mm)	16.5" (420mm)
814	34.3" (871mm)	14.2" (360mm)	16.3" (414mm)	20.5" (520mm)
818	38.3" (973mm)	18.2" (462mm)	18.3" (465mm)	24.5" (622mm)

Optional Feed Chute Drawings