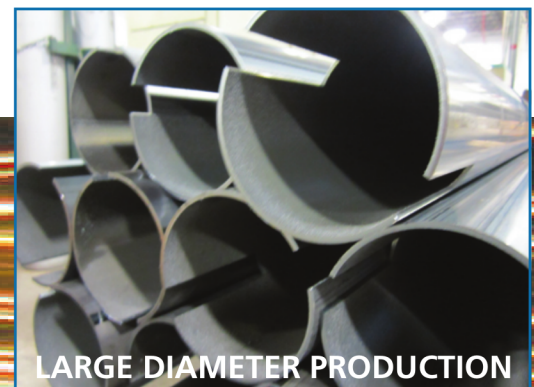
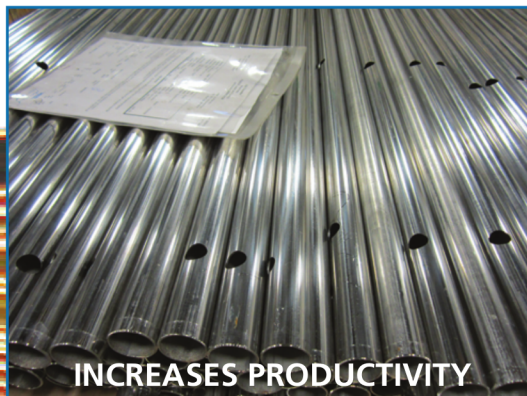
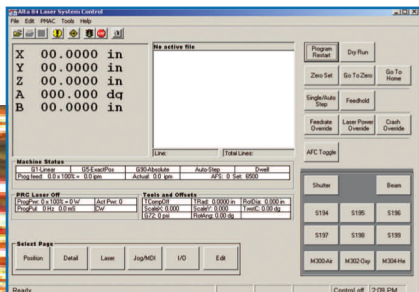


LT2400 Laser Tube Cutting System



- 24 foot maximum tube length
- Round, rectangular, square, or other profiles standard
- Random lengths
- Industrial PC based control with touch-screen and built-in programming features
- PRC lasers standard to 3000 watts
- Best value of any tube laser
- Easy service, full documentation
- American Made



LT2400 Laser Tube Cutting System

The LT2400 Laser Tube Cutting System from AltaMAR has been designed to be the best value in laser tube cutting machines anywhere.

The value comes from using proven technologies:

- Industrial PC based controller
- Innovative tube handler
- High precision drives
- Standard components for easy service and support

These are high performance machines with features specifically designed for high production tube fabrication:

- End profiling
- Standard cutout shapes
- Easy programming with Optisolutions

Besides these standard features, the LT family of Laser Tube Cutting machines come with a variety of options to enhance their capabilities for your specific needs:

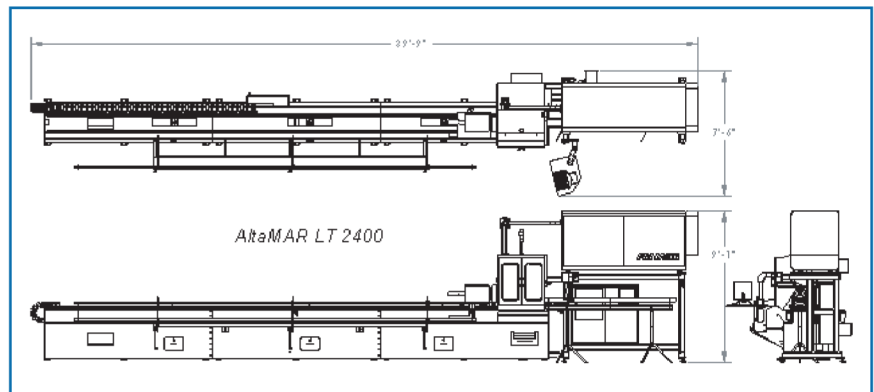
- Automatic bundle feed
- Higher power lasers

Specifications:

Description	Standard Specification	Option	Comment
Tube Type	Round, rectangular square, obround		
Length	24 foot	to 40 foot	
Diameter/ Diagonal	Rectangular to 5" x 5" and round: 0.75" to 6"		
Accuracy	+/- .004 inch or +/- .002" per foot (the greater of the two)		
Material	Carbon steel, stainless, aluminum	To 0.4 inch wall thickness	Many materials and wall thickness available
Rotary speed	70 rpm		
Linear speed	2000 ipm		Tube feed max.
Focus control	AFC standard		
Axes	X axis - 6 inch Y axis - 6 inch Z axis - 4 inch		
Laser	PRC 2000	PRC 3000	Other lasers sources available
Tube loader	Semi-automatic w/pre-staging area	Automatic	
Tube length measurement	Front edge find for use of varying length tubes	Automated nesting and use of materials	
Crash Protection	Protection for X-Y or Z axis crashes		

Specifications subject to change without notice.

Dimensions:



223 Osborne Road
Fridley, MN 55432

763.586.7906 fax: 763.586.7908

or email us at info@altamar.com

or visit our website at www.altamar.com

