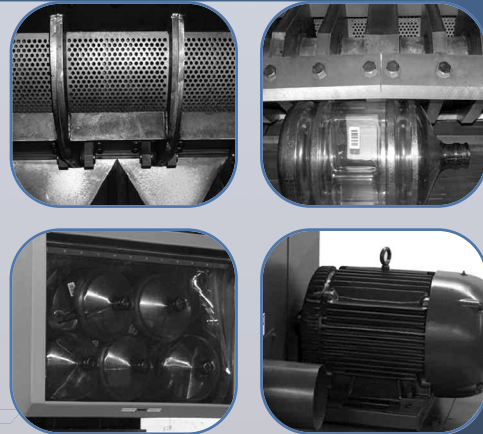


# CT500 SERIES

Tangential Granulators



## CT500 Series Granulators offers rugged construction and power performance

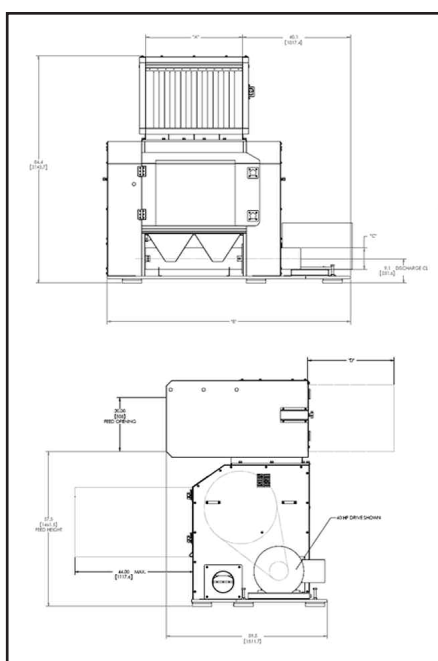
The CT500 Tangential Series central granulator offers superior quality and performance with ease of accessibility. A safety interlocked, rear access, hopper door provides hassle-free cleanout and inspection, while the front hopper access door completely opens up for quick and easy maintenance with minimal downtime.

Available in 3- and 5- knife rotors, with high shear or steep angle rotors, the CT500 series encompasses the design elements for the widest variety of application needs. A side mount motor design permits drive motor to be right-hand or left-hand positioned and completely opens rear service area for maintenance and cleanout.

[www.cumberland-plastics.com](http://www.cumberland-plastics.com)

Model	Cutting Chamber Size (mm, in)	Rotor	Motor (kW, hp)	Throughput (kg, lbs.)
CT-5070	508mm x 712mm (20" x 28")	3 or 5 knife, open rotor	30kW (40hp) std., 37kW (50hp), 45kW (60hp), 55kW (75 hp), 75kW (100hp) option	up to 900 kg/hr (2000 lbs./hr)
CT-5090	508mm x 915mm (20" x 36")	3 or 5 knife, open rotor	37kW (50hp) std., 45kW (60hp), 55kW (75hp), 75kW (100hp) option	up to 1350 kg/hr (3000 lbs./hr)
CT-50120	508mm x 1220mm (20" x 48")	3 or 5 knife, open rotor	55kW (75hp) std, 75kW (100hp) option	up to 1575 kg/hr (3500 lbs./hr)

Dimensions (in, mm)				
Model	A	B	C	D
CT-5070	28" (712mm)	82.4" (2092mm)	6" (152mm)	32" (812mm)
CT-5090	36" (915mm)	90.4" (2295mm)	8" (200mm)	4" (1016mm)
CT-50120	48" (1220mm)	102.4" (2600mm)	10" (254mm)	52" (1320mm)



## Features

- The CT500 Series includes 715mm (28"), 915mm (36") and 1220mm (48") wide models for a wide range of applications
- Motor range includes 30kW (40hp), 37kW (50hp), 45kW (60hp), 55kW (75hp), and 75kW (100hp) TEFC motors
- Offset cutting chamber, 2 Twinshear™ bed knives, top access: single edge, HCHC
- Cutting chamber geometries are available for tangential, offset, and 3-bed knife orientations
- Standard configuration is sound suppressed, with option for full sound enclosed configuration
- Large 500mm (20") cutting circle for enhanced part ingestion
- Discharge is right-hand or left-hand regardless of motor placement
- Innovative design creates enlarged screen area via segmented swing-down reversible screens which provides optimized accessibility, increased throughput and minimal clean out and maintenance access time
- Industry leading unique design enhances safety measures and creates easy serviceability
- Rotational side walls friction and smearing and improve granulate quality. Outboard bearing mounting increases bearing protection to the highest level, and eases maintenance steps
- Open wing rotor rotor style enhances throughput while increasing cutting performance
- Mechanical rotor lock for maintenance
- Air purge bearings for cooling and contamination

## Global Headquarters

**Cumberland Schaumburg**  
1100 E. Woodfield Road  
Suite 550  
Schaumburg, IL 60173  
Tel: +1 (262) 641 8600  
Fax: +1 (262) 641 8653

**Cumberland New Berlin**  
2900 S 160th Street  
New Berlin, WI 53151  
Tel: +1 (262) 641 8600  
Fax: +1 (262) 641 8653

**Cumberland Suzhou**  
109 Xingpu Road SIP  
Suzhou, China 215126  
Tel: +86 512 8717 1919  
Fax: +86 512 8717 1916

**Cumberland Warsaw**  
ul. Działkowa 115  
02-234 Warszawa  
Tel: + 48 22 390 9720  
+ 48 22 390 9721  
+ 48 22 390 9722  
Fax: + 48 22 390 9724

**Cumberland India**  
Gat No. 191/1, Sandbhor Complex,  
Mhalunge, Chakan, Tal Khed,  
Dist. Pune 410501, India  
Tel: +91 21 35329112  
Fax: +91 20 40147576

