



D-350 FA

MODEL D-350 FA

Fully Automatic Straight Cut
Circular Cold Saw 14" Sawblade

Bosch Rexroth servo motor, driver, with ball screw feeder system automatically feeds material. Air over hydraulic hydrocheck automatically feeds sawhead. Factory programmed controller allows operator to set quantity and cut lengths for precise repetitive cutting of solids, tubes, and structures of steel, stainless steel and aluminum.



PROUDLY
MANUFACTURED
IN THE USA



D-350 FA



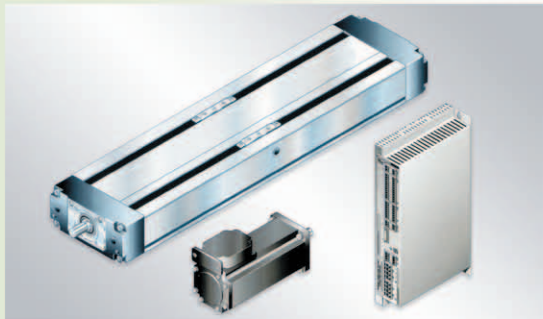
STANDARD EQUIPMENT

- Bosch Rexroth ball screw linear feeder system
- Bosch Rexroth servo motor with absolute feedback
- LCD display with membrane keypad controls
- Air over hydraulic power down-feed
- Pneumatic holding vise, feed vise, and top clamping vise
- All vises have adjustable sensors to determine proper vising and feed
- 2-speed motor 220 or 440 volt, 3-phase
- Overload protection switch
- Mushroom emergency stop button
- High volume electric coolant pump (seal-less)
- 7-gallon coolant tank with large removable chip tray
- Two-piece hinged safety guard
- Complete set of allen wrenches & grease gun
- 350mm (14") sawblade
- Döringer H-32 coolant concentrate
- 1 year warranty

A.



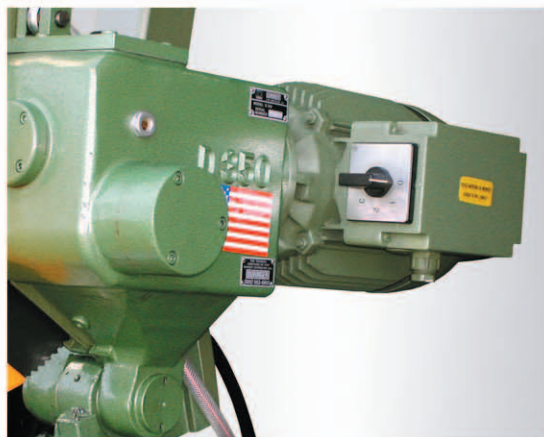
B.



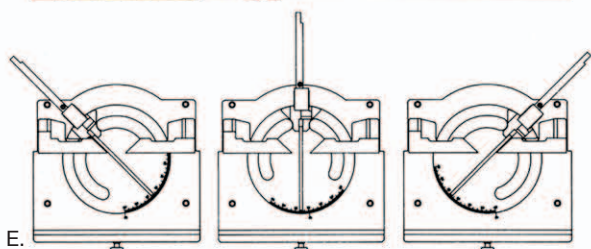
C.



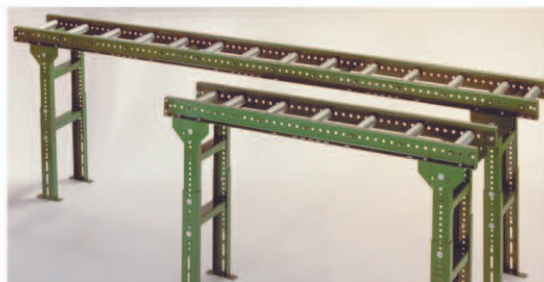
- A. **HUMAN MACHINE INTERFACE CONTROLS** are factory programmed for ease of use. The operator can set cut runs with up to 5 separate quantities and cut lengths. Can also save up to 10 repeatable programs with each program containing up to 5 cut runs.
- B. **SERVO MOTOR & BALL SCREW MODULE FEEDER SYSTEM** is accurate up to 0.002" per foot of travel. The system can feed material up to 12 inches per second with unlimited multi-strokes for infinite cutting lengths.
- C. **AIR OVER HYDRAULIC HYDROCHECK** has quick feed of the sawhead to the material, controlled feed thru the material and quick return for sawing different shapes and sizes.



D.



E.



F.



G.



H.

OPTIONAL EQUIPMENT

- D. **Variable Speed Control:** Available with 3 factory set speeds for sawing steel, stainless steel & aluminum. Available with infinitely adjustable speeds (within factory maximum & minimum) to set sawblade surface speed for all sawblade diameters.
- E. **Miter Table:** Sawhead easily mitters to any position with positive locking at 90° and 45°. Workpiece remains stationary while head rotates for mitering.
- F. **Infeed/Outfeed Roller Table:** Heavy Duty roller table with adjustable legs:

Available Lengths: Capacity:

5' with 2 supports	1000 pounds
10' with 2 supports	1800 pounds
20' with 3 supports	2500 pounds

Rollers recessed for gang stacking and safety.

Custom Vising Fixtures: V-block, C-block, and customized vising fixtures are available for thin wall profiles and unique shapes.

CONTINUING SERVICES

- G. **Sawblade Sharpening Service:** Fully automatic resharpener machines. CNC and fully robotic CBN/Borazon wheels increase sawblade life 25% over conventional sharpening – 2-day turnaround – free local pick-up & delivery.
- H. **Genuine Döringer H.S.S. Sawblades:** Manufactured from M2 DM05 tool steel, heat treated and hardened to 63-65 Rc. Largest inventory in the US. Same day shipping guaranteed. Recommended for all makes of cold saws.
- I. **Döringer H-32 Concentrated Synthetic Coolant:** Mixing ratio 10:1 with water. Available in 1 and 5 gallon pails. Larger quantities available on request. Recommended for all machining.



D-350 FA

TECHNICAL SPECIFICATIONS

CUTTING CAPACITY:

	Standard Saw	Optional Miter Saw
○ Round Tubing:	4.75"	4.75"
□ Square Tubing:	4"	4" – 90° 3.5" – 45°
▤ Rectangular Tubing:	8" x 2.75"	6.5" x 2.75" – 90° 4.75" x 2.5" – 45°
● Solids:	3"	3"

Available Voltages*

220 or 440 Volt 3-Phase 60-Cycle
220 or 440 Volt 3-Phase 60-Cycle

Motor Speed**

850/1700 RPM
1700/3400 RPM

Sawblade Speed**

27/54 RPM
54/108 RPM

*All 3-phase 2-speed motors are single voltage. Please verify your available voltage.

**Gear reduction ratio of 1:31 for maximum torque.

WEIGHTS

Machine unpacked: 1,500 lbs (680kg)
Machine packed: 1,570 lbs (715kg)

DIMENSIONS:

Machine unpacked: 72"H x 30"W x 72"L
Machine packed: 76"H x 36"W x 80"L



DORINGER...

The Reliable Source For All Your Cutting Needs.

Doringer has been manufacturing cold saws for over 20 years. We are very proud that the complete manufacturing process, from design thru fabrication, machining, assembly and final quality control, is done at our facilities in California.

We guarantee your satisfaction with the Doringer D-350 FA Automatic Cold Sawing Machine and we guarantee your complete satisfaction with our continuing services.

Doringer... building a better saw.



DORINGER MANUFACTURING COMPANY INC.

Manufacturers of Circular Metal Sawing Machinery

13400 Estrella Avenue, Gardena, California 90248, U.S.A.

Telephone: (310) 366-7766 | Fax: (310) 366-7490 | Call Toll Free: (800) 962-6800

Email: mail@doringer.com | Website: www.doringer.com