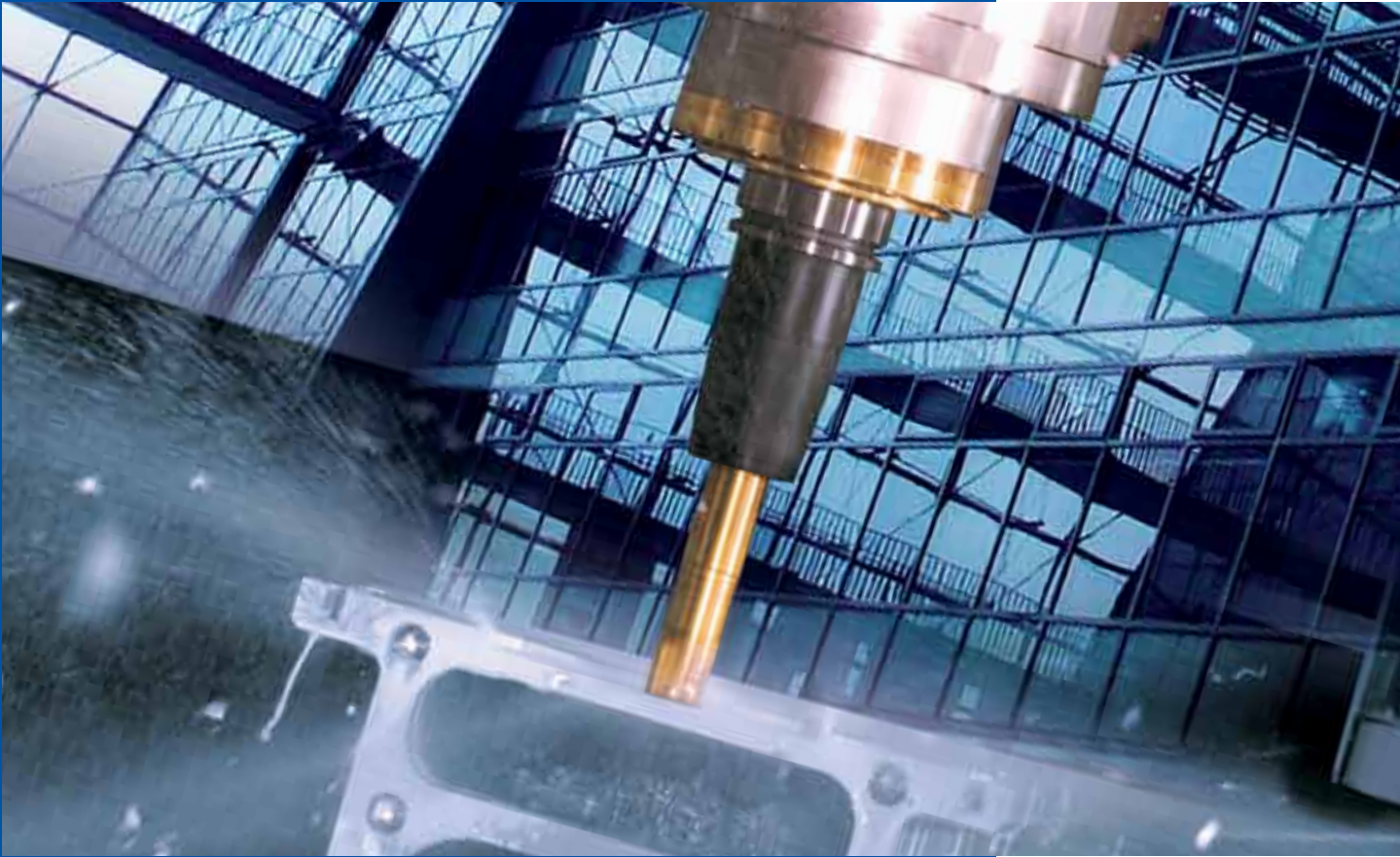
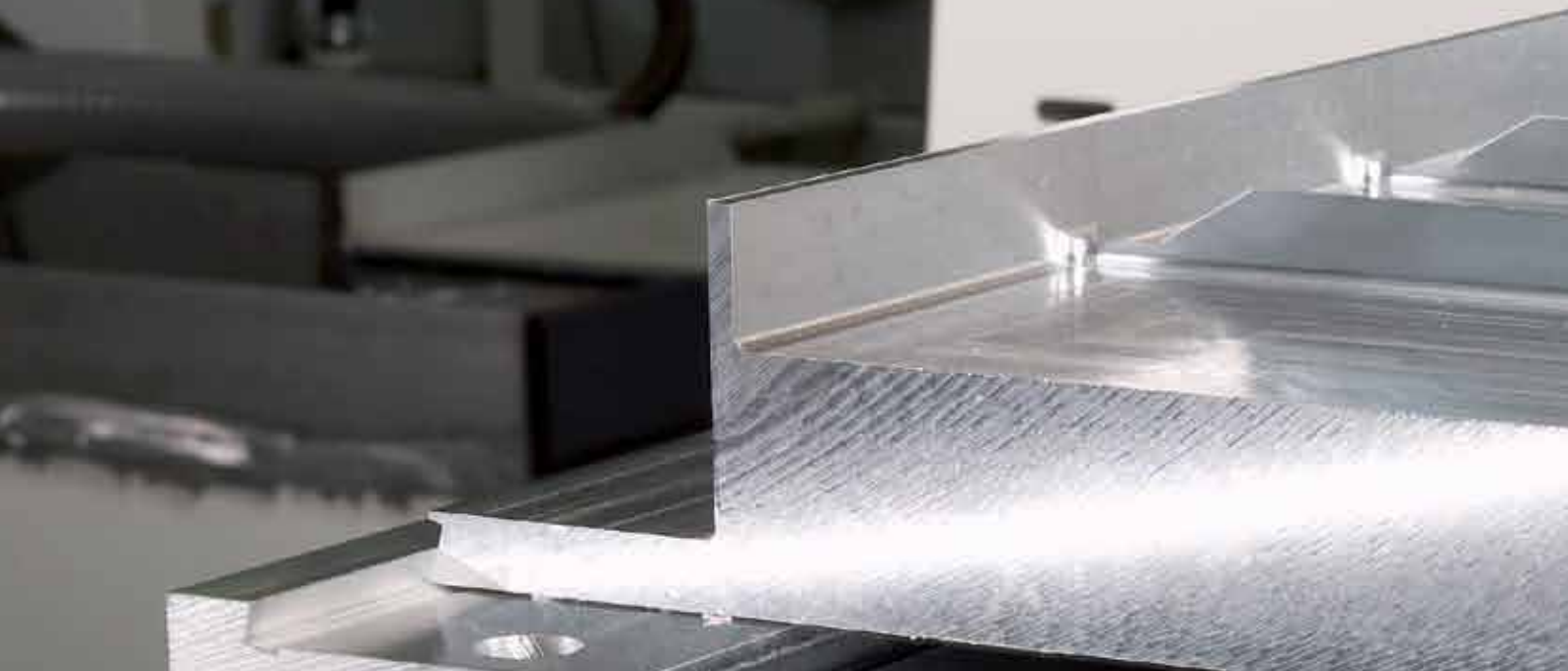


*Handtmann: The Cutting Experts*



***PBZ® Profile Machining Centres***

**handtmann**  
*Ideas for the future.*



**Handtmann PBZ®:**

## Leading profile machining for the highest technological and economical requirements!

With the 5-axis HSC Profile Machining Centres PBZ®, Handtmann sets the benchmark in technological and economic machining of composite, aluminium, steel and titanium profiles up to 30 metres / 1180 inches in length.

Three models with different performance focuses are available to solve any complex task. Worldwide, first-class references in the aerospace and metal-working industry are an expression of the quality, Handtmann achieves with every machining centre.

Handtmann machining centres offer the highest material removal rates and spindle power up to 81 kW over constructions with machining during loading and unloading to complete fully automated profile machining centres with integrated material handling.





Whichever of the three PBZ® five machining centres you prefer, with our professional consulting, you will always reach the right decision for your application. Experience premium-quality, leading technology, fascinating precision and outstanding economy.

**Welcome to Handtmann.**



PBZ® HD

Page 4 | 5



PBZ® SC

Page 6 | 7



PBZ® NT

Page 8 | 9

Technical Data

Page 10 | 11





## Handtmann PBZ® HD:

# Highest material removal rates and outstanding precision!

The PBZ® HD offers high performance machining in its purest form. With the highest material removal rates, spindle power up to 81 kW and outstanding precision, solid bars of material and heavy extrusions up to 30 metres / 1180 inches can be easily machined in one setup.

The integrated flexible clamping system is adapted to individual customer's requirements and keeps down-time to a minimum.

### Convincing advantages:

- Highest material removal rates in aluminium, steel and titanium with spindle power up to 81 kW
- High-efficient exhaust units for composite-materials
- Fully enclosed work zone for machining various materials, with integrated washing system
- Customer-specific optimised clamping systems and material removal systems
- Interference-contour free and high-precise machining over the entire length of the part up to 30 metres / 1180 inches
- Profile cross section: max. 800 x 575 mm
- Machine configuration also available as table version





*From above:*

- Precision in aluminium solid material
- Customised clamping system
- Fully enclosed work zone



## Handtmann PBZ® SC:

# Highly dynamic pendulum machining up to 24 metres in length!

The PBZ® SC combines the advantages of a pendulum operation with high spindle powers and lengths up to 24 metres / 945 inches.

This unique combination guarantees the efficient machining of aluminium profiles, heavy steel profiles or composite-materials. Highest precision and flexibility in your materials provide a diversified scope simultaneously with convincing economy.

### Convincing advantages:

- Perfect combination of power, precision and economy
- Loading and unloading during production due to the two machining areas
- High-dynamic machining and construction with three, four or five axis
- Profile cross section: max. 800 x 500 mm
- Machine configuration also available as table version
- Spindle power up to 37 kW and workpiece lengths up to 24 metres / 945 inches
- Various applications from light aluminium profiles up to heavy steel profiles

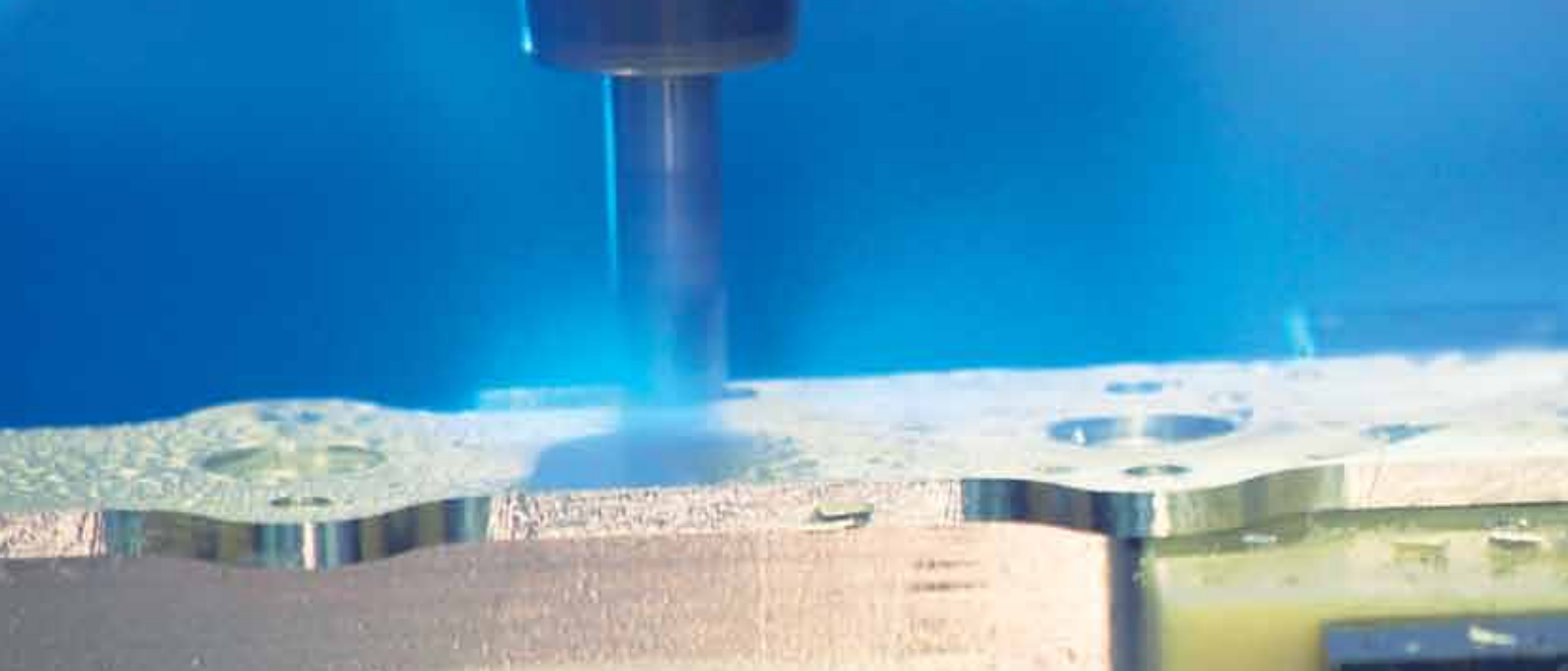






From above:

- Economic pendulum operation
- Fully enclosed work zone for composite machining
- PBZ® SC as table version



## Handtmann PBZ® NT:

# Maximum flexibility and 6-side profile machining!

The PBZ® NT with its fixed portal and 6-side profile machining provides highest flexibility in aluminium and steel.

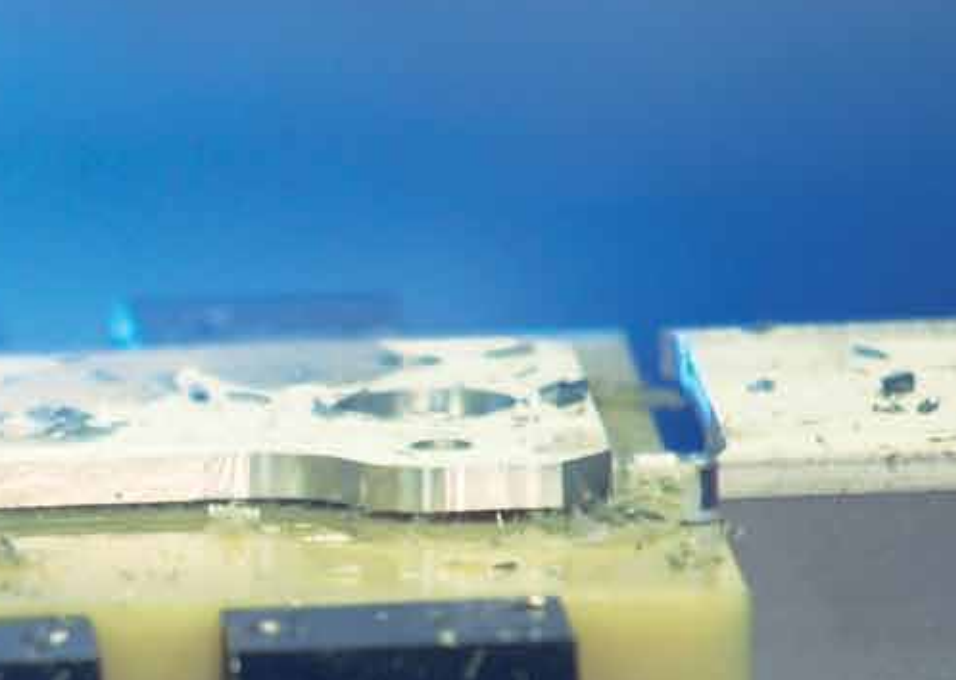
With profil lengths up to 25 metres / 980 inches and tool magazines from 14 up to 90 slots, the machining of any profile cross section is possible. The integrated saw for spatial cuttings allows multiple parts to be machined out of a single bar.

### Convincing advantages:

- 6-side complete machining from bar stock up to 25 metres / 980 inches in length in aluminium and steel
- Flexible clamping system for machining all required profile cross sections
- Machining of profile cross sections up to 750 x 300 mm / 29.5 x 11.8 inches
- Automatic positioning of clamping vices
- Easy programming







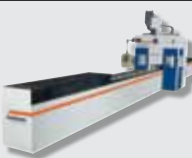


*From above:*

- Automatic tool changer with saw unit
- Flexible profile cross sections
- Spatial saw cuts possible



## Handtmann Profile Machining Centres: Convincing solutions for every profile machining!

	Travel speeds X/Y/Z-axis (m/min / ipm)	Work piece length (mm / inch)	Work piece cross section Width x Height (mm / inch)	Spindle power	Tool holder	Tool magazine	Control
<b>PBZ® HD</b>							
	max. 70/40/40 max. 2 755/1 575/1 575	max. 30 000 max. 1 180	max. 600/300 max. 23.6 x 11.8  Table version: max. 800/575	max. 81 kW max. 30 000 rpm	HSK 63 A	Disc type tool magazine 36 slots  Chain type tool magazine 60, 90 slots	SIEMENS 840 D
<b>PBZ® SC</b>							
	max. 70/55/55 max. 2 755/2 165/2 165	max. 24 000 max. 945	max. 400/300 max. 15.8 x 11.8  Table version: max. 800/500	max. 37 kW max. 28 000 rpm	HSK 50 E HSK 63 F HSK 63 A	Disc type tool magazine 32, 36 slots	SIEMENS 840 D
<b>PBZ® NT</b>							
	max. 135/55/55 max. 5 1315/2 165/2 165	max. 25 000 max. 980	max. 750/300 max. 29.5 x 11.8	max. 37 kW max. 28 000 rpm	HSK 50 E HSK 63 F HSK 63 A	Disc type tool magazine 14, 36 slots	SIEMENS 840 D

Other options on request.



**Every machining requirement is different and demands a specific solution. With its profile machining centres, Handtmann offers customer-oriented concepts to each customer.**

The clamping fixture is the key issue of the superior and complex machining of profiles. To accurately machine the parts, Handtmann offers the perfect solution for every customer. Whether the machine is equipped with standard or special clamping vices, a pneumatic or hydraulic clamping fixture or still with vacuum, with our professional consulting, you always make the right decision.



**Beyond the base machine, Handtmann offers numerous options for an efficient all-round concept:**

- Chip conveyor and briquette plants
- Suction and filtration systems
- Minimal quantity lubrications
- Coolant purification plants
- Radio wave touch probes
- Tool monitoring devices and tool managements
- Process monitoring systems
- Material handling systems
- Robotics and automation solutions

**The Handtmann team tackles every challenge. Your future is with Handtmann.**



*From above:*

- Washing system
- Customised clamping system
- Radio wave touch probe
- PBZ® HD with automation





[www.handtmann.de](http://www.handtmann.de)

## Handtmann A-Punkt Automation GmbH

Eisenbahnstraße 17  
88255 Baienfurt  
Germany  
Phone +49 751 / 5079 - 0  
Fax +49 751 / 5079 - 842  
[sales.apunkt@handtmann.de](mailto:sales.apunkt@handtmann.de)  
[www.handtmann.de](http://www.handtmann.de)

## Handtmann CNC Technologies, Inc.

205 Prairie Lake Rd., Unit B  
EAST DUNDEE, IL 60118  
USA

Phone +1 847 / 844 33 00  
Fax +1 847 / 844 33 03  
[info@handtmanncnc.com](mailto:info@handtmanncnc.com)  
[www.handtmanncnc.com](http://www.handtmanncnc.com)

## Handtmann CNC UK

A Division of the Engineering Technology Group  
Northfield Road · Southam  
Warwickshire CV47 0FG  
England

Phone +44 1926 / 818 - 418  
Fax +44 1926 / 818 - 414  
[info@handtmannuk.com](mailto:info@handtmannuk.com)  
[www.handtmann.de](http://www.handtmann.de)

## OOO Handtmann CNC Machines

1-st Botkinsky drive, 7, bld. 35  
Moskau 125284  
Russia

Phone +7 499 / 795 86 - 17  
Fax +7 499 / 795 86 - 17  
[info@handtmann-cnc-machines.com](mailto:info@handtmann-cnc-machines.com)  
[www.handtmann.de](http://www.handtmann.de)

## OOO Handtmann CNC Machines

ul. Kirova 103  
Novosibirsk 630008  
Russia

Phone +7 38 3 / 266 13 81  
Fax +7 38 3 / 266 13 81  
[info@handtmann-cnc-machines.com](mailto:info@handtmann-cnc-machines.com)  
[www.handtmann.de](http://www.handtmann.de)

**handtmann**  
*Ideas for the future.*