

# HURCO<sup>®</sup>

# TMX10

## High performance turning.



The TMX10 is a true slant-bed lathe, which provides increased rigidity and facilitates larger capacity. Increased productivity was the objective for all product decisions when developing the TMX10. All digital control, drives, and motors with absolute encoders on all linear axes result in superior surface finish capability. The programmable tailstock and superior graphics capabilities promote increased productivity.

		TMX10
X, Z, W Axis Travel, inches (mm)		9.15 x 26 x 29.13 (232 x 660 x 740)
Swing Over Cross Slide, inches (mm)		16.3 (415)
Distance Between Centers, inches (mm)		33.6 (854)
Max Cutting Diameter, inches (mm)		16.3 (415)
Max Cutting Length, inches (mm)		25 (635)
Bar Capacity, inches (mm)		3 (76.2)
Peak Spindle Motor, Main Spindle, hp (Kw)		37.3 (27.8)
Max Spindle Motor Torque ft lbs (Nm) @ rpm	3.5k	258.2 (350) @759
Rapid Traverse X, Z Axis, inches (M) / min		945 / 1,181 (24 / 30)
Tool Shank, inches (mm)		1 (25) Square
Number of Tools Standard		12 / Slotted
3 Jaw Chuck, Main Spindle, inches (mm)		10 (254)
Turret Index Time - Adjacent, seconds		0.12
Positioning, inches (mm)		0.0004 (0.010)
Repeatability, inches (mm)		0.0002 (0.005)
Weight, pounds (Kg)		13,448 (6,100)

Optimum machine performance is reliant upon installation conditions at the facility, such as power supply, air supply, and ambient air conditions.

### Best in class features

- Programmable tailstock.
- Index position within one degree.
- Generous through-hole.
- Faster servo turret instead of hydraulic.
- Hydraulic system with heat exchanger promotes thermal stability, which increases reliability, accuracy, and repeatability.
- Ergonomic design features, such as front foot pedals to quickly open/close the chuck and engage/disengage the tailstock, provide maximum productivity and convenience.
- Options are plug and play so they can be easily added at any time.
- Hurco products are UL, CSA, NFPA 79 independently certified, with CE certification optional.

# HURCO<sup>®</sup>

## TMX10

### Hardware Features / Options

#### Coolant / Chip Removal

- Chip Conveyor
- Coolant Screen System
- High Pressure Coolant Ready
- Telescopic Way Covers
- Wash Down Gun and Air Gun

#### Spindle / Motor

- High Speed Servo Systems
- Low Air Pressure Switch
- Spindle Chiller

#### Tooling / Accessories

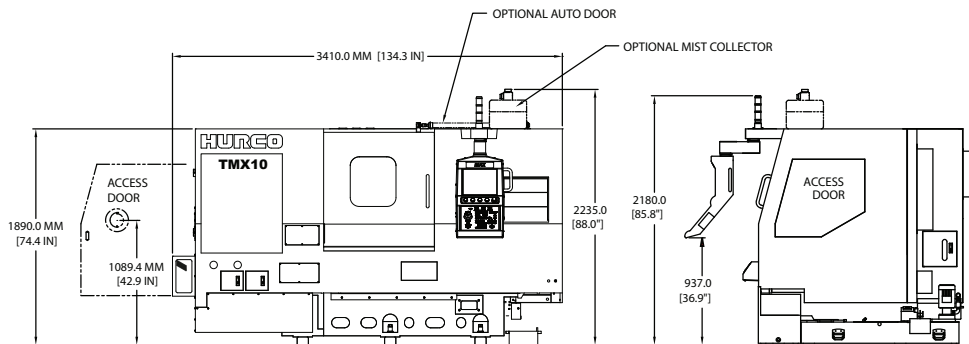
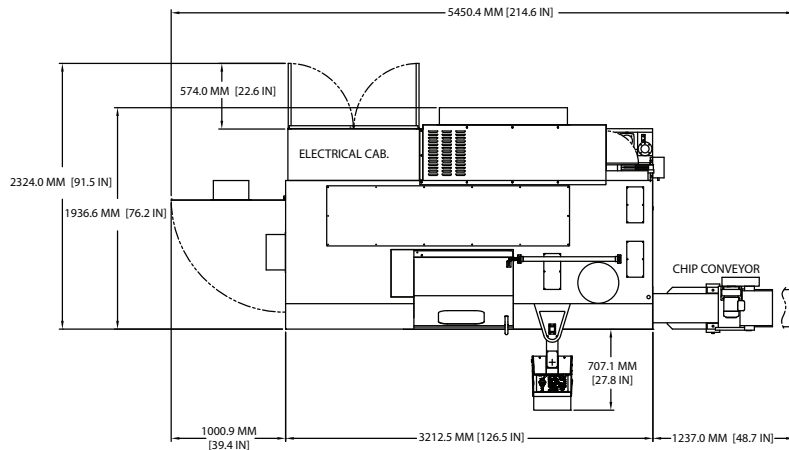
- Bar Feeder
- Collet Chucks
- Chuck Air Blast
- Tooling
- Tool Setter

#### Frame / Cabinet

- Auto Door, Door Interlock
- E-Stop Button on Control
- Easy Access Side Door with Latch
- Fully Contained Tool Storage Shelves
- Linear Rails
- Lube Oil Separator
- Parts Conveyor, Parts Catcher
- Power Cabinet Air Conditioner
- Power Cabinet Heat Exchanger
- Solid One Piece High-Grade Cast Iron Bed
- Work Light

### WinMax Software/Automation Packages

- Advanced Verification Graphics with 3D Solid Rendering
- Conversational Turning Programming
- NC (G-Code) Programming
- DXF Transfer
- NC Productivity Package (NCP)
- WinMax Desktop
- UltiNet LAN Interface



**Shipping Dimensions, inches (mm)** 138.2" x 90.6" x 93.3" (3500 x 2300 x 2371)

### Service Requirements

KVA Rating 69.65  
 Voltage Required 200-240 VAC/60 Hz  
 Air Requirements 5 CFM @ 80-100 psi (0.14 M<sub>3</sub>/min @ 6-8 bar)

# HURCO<sup>®</sup>

800.634.2416 info@hurco.com Find more product information and specifications at [www.hurco.com](http://www.hurco.com)

Machines shown with options. Prices and information may change without notice. 8.10