

HURCO[®]

VMX42SR

Powerful 5-Axis. Small footprint.



The VMX42SR was designed with a swivel head and horizontal rotary table to meet the demands of simultaneous 5-axis machining without monopolizing a large amount of floor space. With larger linear rails, bigger ballscrews, and heavier servo drives, the VMX42SR delivers superb surface finish and accuracy. The integrated Hurco control with WinMax[®] software is full of powerful software features that increase productivity.

		VMX42SR
X, Y, Z Axis Travel, inches (mm)		42 x 24 x 24 (1,067 x 610 x 610)
C-Axis Table / Pallet Size (mm)		Ø 24 (Ø 610)
Max Weight on Table, lbs (Kg)		1,100 (500)
Table Size, inches (mm)		50 x 24 (1,270 x 610)
Peak Spindle Motor, hp (Kw)		48 (36)
Max Spindle Motor Torque, ft lbs (Nm) @ rpm	12k	87 (118) @ 2,900
Rapid Traverse X, Y / Z axis, ipm (M / min)		1,378 / 1,181 (35 / 30)
Tools, Standard / Option		40 CAT (BT) 40
Positioning, inches (mm)		±0.0002 (0.005)
Repeatability, inches (mm)		±0.0001 (0.0025)
Machine Weight, lbs (Kg)		16,640 (7,565)

Optimum machine performance is reliant upon installation conditions at the facility, such as power supply, air supply, and ambient air conditions.

Best in class features

- Simplified programming and setup of complex, multi-sided parts with the integrated Hurco control.
- Expanded compatibility with CAD/CAM systems.
- Powerful Swept Surface feature reduces programming time by as much as 80 percent.
- Small footprint. Large work cube.
- Better part accuracy and superb surface finish.

*This product is subject to the export control laws of the United States and/or other countries. Hurco complies fully with the export control laws and regulations of the United States and the jurisdictions in which it does business. In its standard configuration, this product includes control software capable of machining in three axes plus positioning in two separate axes ("three plus two") and/or multi-sided five-axis machining. This product is capable of simultaneous contouring in five axes only with the addition of supplemental software subject to separate approval.

800.634.2416 info@hurco.com Find more product information and specifications at www.hurco.com
Machines shown with options. Prices and information may change without notice. 8.10

HURCO[®]

VMX42SR

Hardware Features / Options

Coolant / Chip Removal

- Chip Conveyor
- Coolant Ring
- Coolant Screen System
- High Pressure CTS
- Spindle Coolant Nozzle
- Telescopic Way Covers
- Top Dome
- Wash Down Gun and Air Gun
- Wash Down System

Spindle / Motor

- High Speed Servo Systems
- Low Air Pressure Switch
- Motor Brake in Z-Axis
- Spindle Chiller

Tooling / Accessories

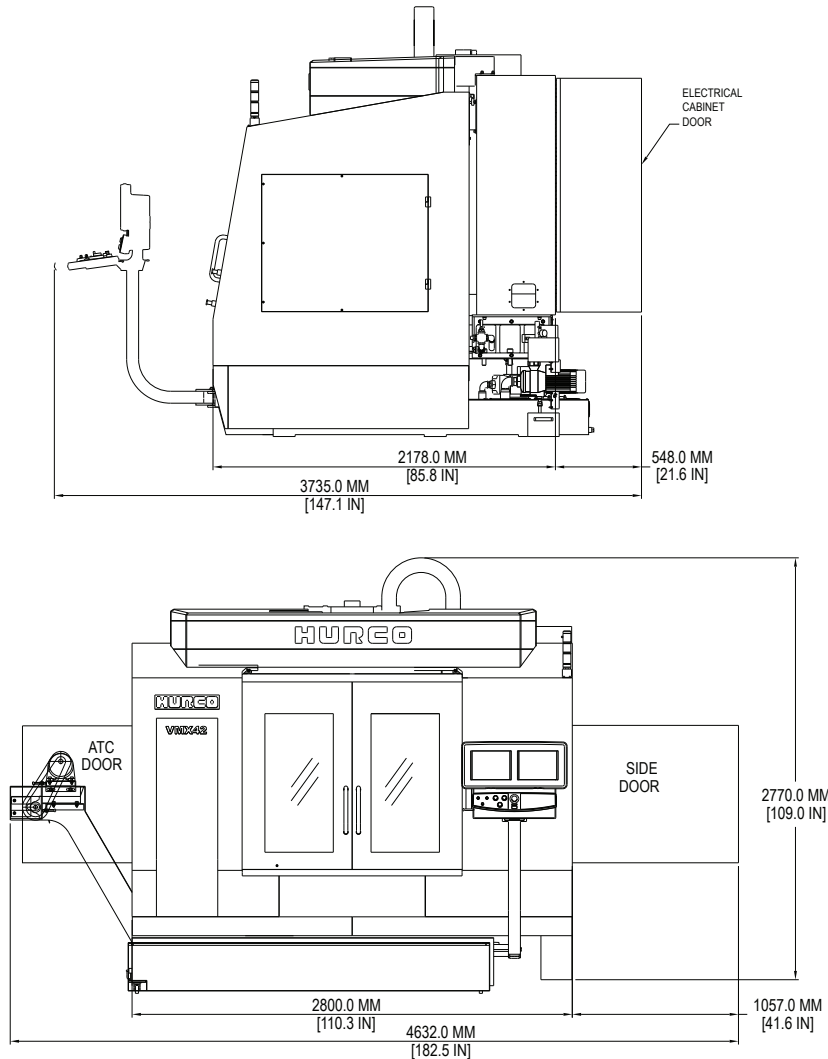
- Tooling and Vises

Frame / Cabinet

- Air Conditioner
- Door Interlock
- Dual Work Lights
- E-Stop Button on Control Head
- Easy Access Side Door with Latch
- Fully Contained Tool Storage
- Linear Glass Scales (X, Y, Z)
- Linear Rails
- Lube Oil Separator
- Power Cabinet Heat Exchanger
- Solid One Piece High-Grade Cast Iron Bed

WinMax Software/Automation Packages

- Advanced Verification Graphics with 3D Solid Rendering
- Swept Surface with 3D Mold
- NC/Conversational Merge
- SelectSurface Finish Quality (SFQ)
- Tool Center Point Management
- Tool and Material Library
- UltiPocket with Helical Ramp Entry
- DXF Transfer
- Tool Probing
- Part Probing
- Industry Standard NC (ISNC)
- NC Productivity Package (NCPPI)
- WinMax Desktop
- UltiNet LAN Interface
- Universal Rotary
- UltiMotion
- Slots



Shipping Dimensions, inches (mm) 116.1" x 90.6" x 100.00" (2,949 x 2,302 x 2,535)

Service Requirements

Power Required 50 KVA (full load)
 Voltage Required 200-240 VAC / 50-60 Hz
 Air Required 5 CFM @ 80-100 psi (0.14 M³ / min @ 6-8 bar)

HURCO[®]

800.634.2416 info@hurco.com Find more product information and specifications at www.hurco.com

Machines shown with options. Prices and information may change without notice. 8.10