



**HURCO**  
I N C O N T R O L

VMX42U

**Precise. Reliable. Rigid.**



The VMX42U combines reliability and performance with advanced technology. This 5-axis machining center streamlines the production process of multi-faceted, complex parts. Our integrated control powered by WinMax is full of smart software features that help you get the job done faster. Our comprehensive smoothing algorithm provides a superb surface finish that minimizes the need to hand polish finished parts.

		VMX42U
X, Y, Z Axis Travel, inches (mm)		42 x 24 x 20.5 (1,067 x 610 x 520)
Table Size, inches (mm)		Ø 13.7 (Ø 348)
Max Weight on Table, lbs (Kg)		550 (250)
Peak Spindle Motor, hp (Kw)		24 (18)
Max Spindle Motor Torque, ft lbs (Nm) @ rpm	10k	210 (285) @ 600
	12k	175 (237) @ 720
	15k	140 (190) @ 900
Rapid Traverse X, Y / Z Axis, inches (M) / min		1,378 / 1,181 (35 / 30)
Tools, Standard		40 CAT (BT) 40
Positioning, inches (mm)		±0.0002 (0.005)
Repeatability, inches (mm)		±0.0001 (0.0025)
Machine Weight, lbs (Kg)		14,608 (6,640)

Optimum machine performance is reliant upon installation conditions at the facility, such as power supply, air supply, and ambient air conditions.

### Best in class features

- Integrated trunnion table design provides exceptional part clearances and larger part capacity.
- High capacity table rotates faster and handles more weight.
- Designed and manufactured to be a true 5-axis machine unlike many competitive models that simply attach a trunnion table to a basic 3-axis machine.
- Hurco's easy-to-master 5-sided conversational programming requires only one part setup.
- Hurco products are UL, CSA, NFPA 79 independently certified, with CE certification optional.

\*This product is subject to the export control laws of the United States and/or other countries. Hurco complies fully with the export control laws and regulations of the United States and the jurisdictions in which it does business. In its standard configuration, this product includes control software capable of machining in three axes plus positioning in two separate axes ("three plus two") and/or multi-sided five-axis machining. This product is capable of simultaneous contouring in five axes only with the addition of supplemental software subject to separate approval.

800.634.2416 info@hurco.com Find more product information and specifications at [www.hurco.com](http://www.hurco.com)  
Machines shown with options. Prices and information may change without notice. 2.10



# VMX42U

## Hardware Features / Options

### Coolant / Chip Removal

- Chip Conveyor
- Coolant Screen System
- Flood Coolant
- High Pressure CTS
- Telescopic Way Covers
- Top Dome
- Wash Down Gun and Air Gun
- Wash Down System

### Spindle / Motor

- Dual Wound Motor
- High Speed Servo Systems
- Low Air Pressure Switch
- Motor Brake in Z-Axis
- Spindle Chiller

### Tooling / Accessories

- Tooling and Vises

### Frame / Cabinet

- Air Conditioner
- Door Interlock
- Dual Work Lights
- E-Stop Button on Control Head
- Easy Access Side Door with Latch
- Fully Contained Tool Storage
- Linear Glass Scales (X, Y, Z)
- Lube Oil Separator
- Power Cabinet Heat Exchanger
- Solid One Piece High-Grade Cast Iron Bed

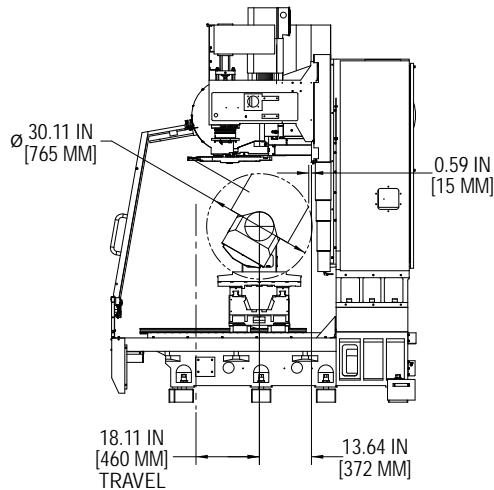
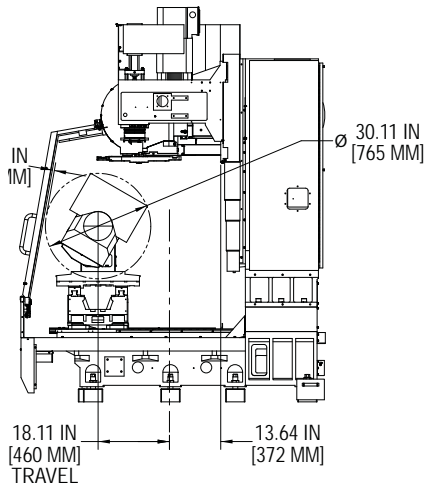
## WinMax Software/Automation Packages

- Advanced Verification Graphics with 3D Solid Rendering
- Swept Surface with 3D Mold
- NC/Conversational Merge
- SelectSurface Finish Quality (SFQ)
- Tool Center Point Management
- Tool and Material Library
- 4th Axis Rotary Wrap
- UltiPocket with Helical Ramp Entry
- DXF Transfer
- Tool Probing
- Part Probing
- Industry Standard NC (ISNC)
- NC Productivity Package (NCP)
- WinMax Desktop
- UltiNet LAN Interface

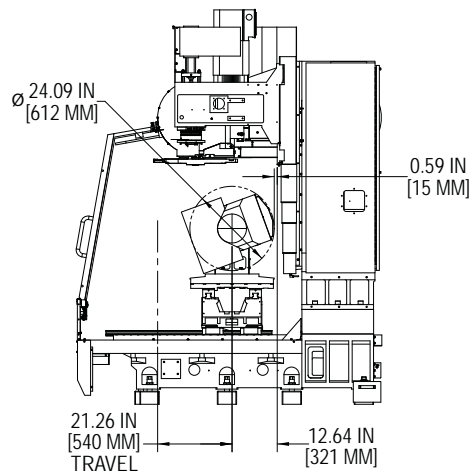
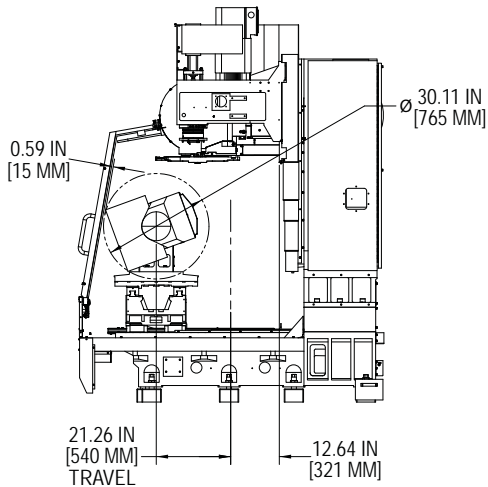


# VMX42U

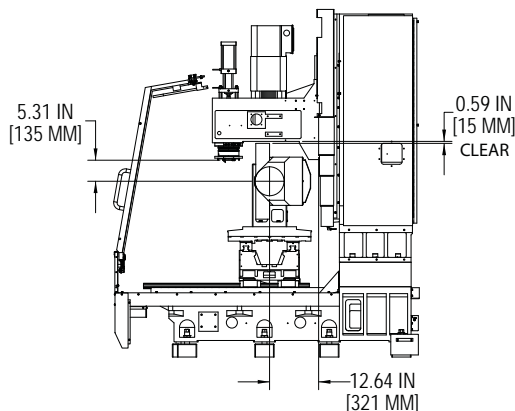
## Usable Y-travel at full tilt positions



**Usable Y-travel for  
tilt at -30°**  
**18.2 IN [500 MM]**



**Usable Y-travel for  
tilt at +110°**  
**20 IN [508 MM]**



**Distance from  
spindle nose to  
trunnion table pivot  
with maximum part  
with table at +90°  
tilt**