



HURCO
I N C O N T R O L

VMX60U

Powerful technology. Rigid machine.



The advanced technology of the integrated Hurco control and the reliability of Hurco's precision engineering make the VMX60U a 5-axis machine that exceeds expectations. Because Hurco uses an integrated design and manufacturing process, the VMX60U maintains accuracy.

VMX60U		
X, Y, Z Axis Travel, inches (mm)	60 x 26 x 24 (1,524 x 660 x 610)	
Table Size, inches (mm)	Ø 19.7 (Ø 500)	
Max Weight on Table, lbs (Kg)	880 (400)	
Peak Spindle Motor, hp (Kw)	24 (18)	
Max Spindle Motor Torque, ft lbs (Nm) @ rpm	10k	210 (285) @ 600
	12k	175 (237) @ 720
	15k	140 (190) @ 900
Rapid Traverse X, Y / Z Axis, inches (M) / min	1,181 / 787 (30 / 20)	
Tools, Standard	40 CAT (BT) 40	
Positioning, inches (mm)	±0.0002 (0.005)	
Repeatability, inches (mm)	±0.0001 (0.0025)	
Machine Weight, lbs (Kg)	18,800 (8,545)	

Optimum machine performance is reliant upon installation conditions at the facility, such as power supply, air supply, and ambient air conditions.

Best in class features

- Integrated trunnion table design provides exceptional part clearances and larger part capacity.
- High capacity table rotates faster and handles more weight.
- Designed and manufactured to be a true 5-axis machine unlike many competitive models that simply attach a trunnion table to a basic 3-axis machine.
- Hurco's easy-to-master 5-sided conversational programming requires only one part setup.
- Hurco products are UL, CSA, NFPA 79 independently certified, with CE certification optional.

*This product is subject to the export control laws of the United States and/or other countries. Hurco complies fully with the export control laws and regulations of the United States and the jurisdictions in which it does business. In its standard configuration, this product includes control software capable of machining in three axes plus positioning in two separate axes ("three plus two") and/or multi-sided five-axis machining. This product is capable of simultaneous contouring in five axes only with the addition of supplemental software subject to separate approval.

800.634.2416 info@hurco.com Find more product information and specifications at www.hurco.com
Machines shown with options. Prices and information may change without notice. 2.10

VMX60U

Hardware Features / Options

Coolant / Chip Removal

- Chip Conveyor
- Coolant Screen System
- Flood Coolant
- High Pressure CTS
- Telescopic Way Covers
- Top Dome
- Wash Down Gun and Air Gun
- Wash Down System

Spindle / Motor

- Dual Wound Motor
- High Speed Servo Systems
- Low Air Pressure Switch
- Motor Brake in Z-Axis
- Spindle Chiller

Tooling / Accessories

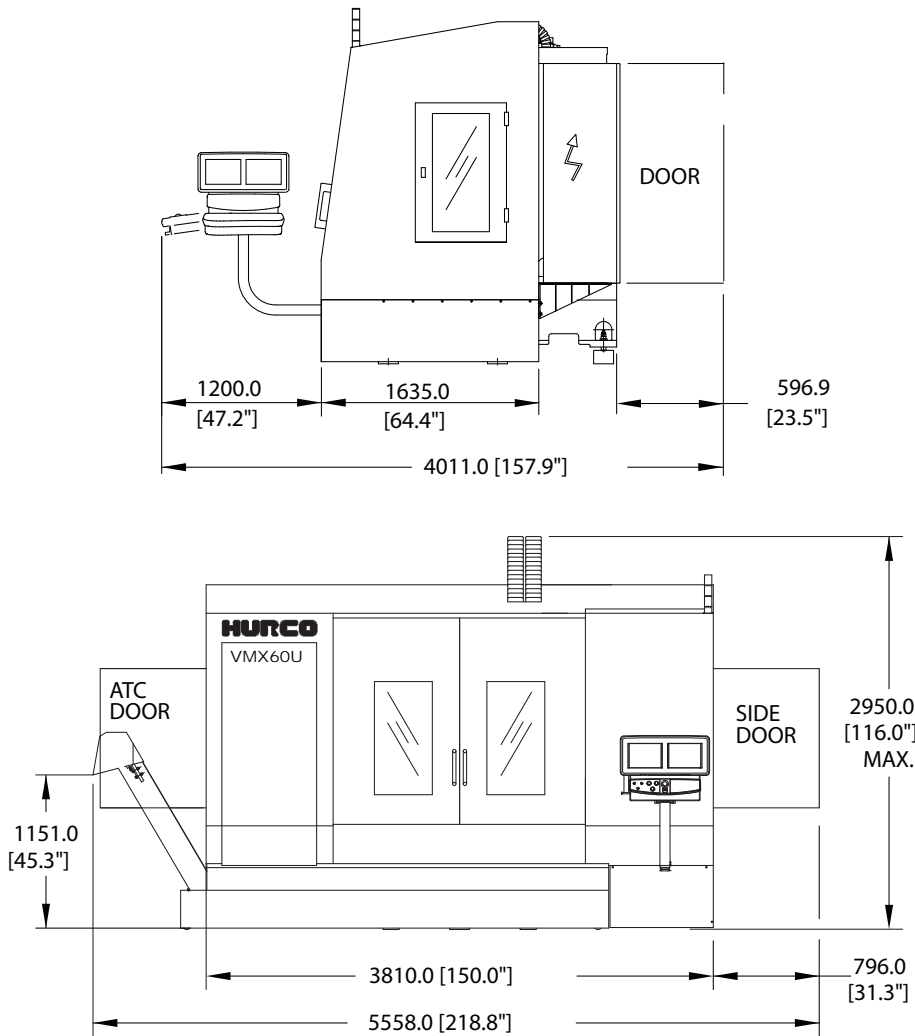
- Tooling and Vises

Frame / Cabinet

- Air Conditioner
- Door Interlock
- Dual Work Lights
- E-Stop Button on Control Head
- Easy Access Side Door with Latch
- Fully Contained Tool Storage
- Linear Glass Scales (X, Y, Z)
- Lube Oil Separator
- Power Cabinet Heat Exchanger
- Solid One Piece High-Grade Cast Iron Bed

WinMax Software/Automation Packages

- Advanced Verification Graphics with 3D Solid Rendering
- Swept Surface with 3D Mold
- NC/Conversational Merge
- SelectSurface Finish Quality (SFQ)
- Tool Center Point Management
- Tool and Material Library
- 4th Axis Rotary Wrap
- UltiPocket with Helical Ramp Entry
- DXF Transfer
- Tool Probing
- Part Probing
- Industry Standard NC (ISNC)
- NC Productivity Package (NCPPI)
- WinMax Desktop
- UltiNet LAN Interface



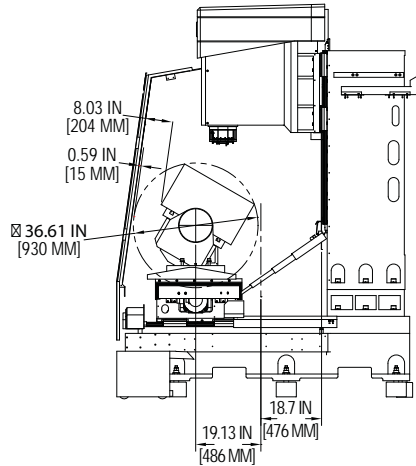
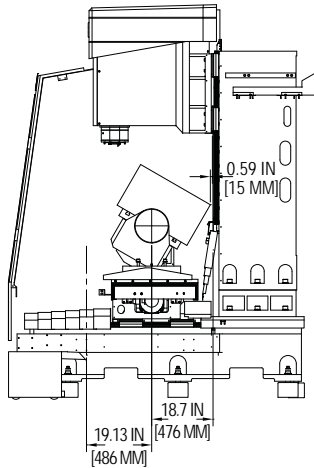
Shipping Dimensions, inches (mm) 150.0" x 91.5" x 100.59" (3810 x 2325 x 2555)

Service Requirements

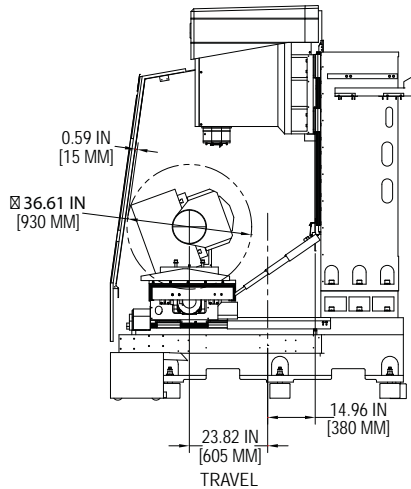
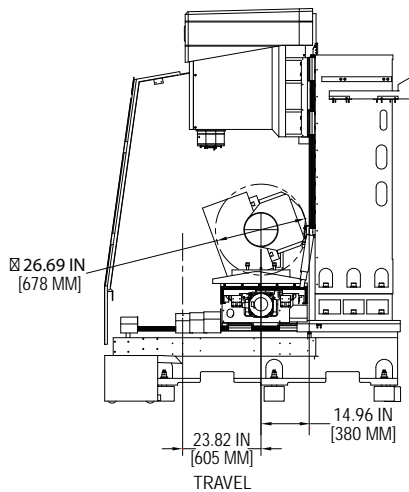
KVA Rating	65
Voltage Required	200-240 VAC/60 Hz
Air Requirements	5 CFM @ 80-100 psi (0.14 M ₃ /min @ 6-8 bar)

VMX60U

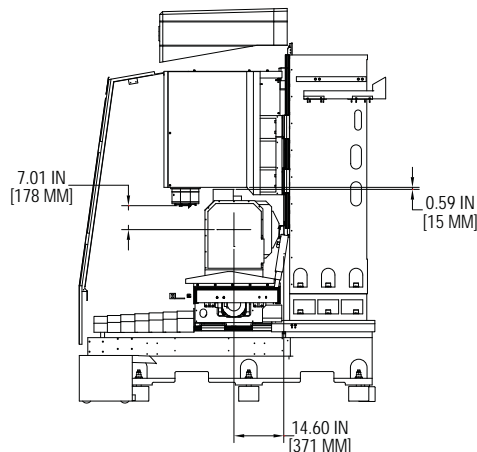
Usable Y-travel at full tilt positions



**Usable Y-travel for
tilt at -30°**



**Usable Y-travel for
tilt at +110°**



**Distance from
spindle nose to
trunnion table pivot
with maximum part
with table at +90°
tilt**