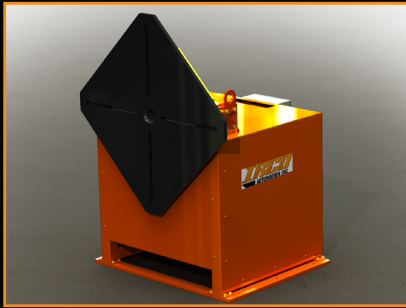




UTILITY



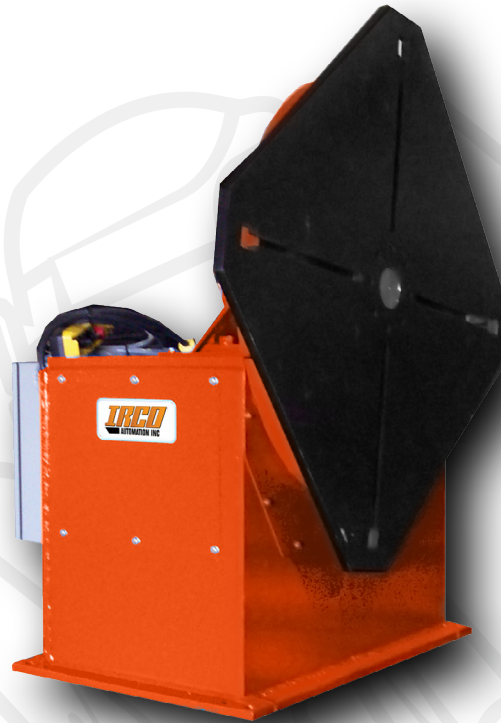
FIXED HEIGHT



MANUAL ELEVATING



POWER ELEVATING



IRCO's Head & Tailstocks are designed to handle long, oversized products, such as pipes, pressure vessels, trailer frames, etc.

Fixed Height Headstocks are our most popular model, with Utility, Manual and Power Elevating styles also available.

- Provides 360° of rotation for optimal part orientation.
- Increased load capacity when paired with matching tailstock.
- Can be mounted on rails to accommodate various lengths of weldments.
- Custom mounting fixtures also available.
- All motion is controlled through standard pendant or footswitch controls, allowing remote operation.

All IRCO Standard Products can be fully automated and customized for specialty applications.

If you would like more information about IRCO Head & Tailstocks, please contact IRCO Automation at 1-800-742-1175 or info@ircoautomation.com.

HEADSTOCKS & TAILSTOCKS							
TYPE	NAME	LOAD CAPACITY (LBS.)	LOAD ECC. (IN.)	ROT. TORQUE (LBS.-IN.)	ROT. SPEED (RPM)	ELEV. RANGE (IN.)	TABLE (IN.)
UTILITY	HSU-500	500	6	3,000	2.4*	N/A	24
	HSU-1K	1,000	6	6,000	2.4*	N/A	30
	HSU-2K	2,000	6	12,000	1.4*	N/A	30
FIXED HEIGHT/MANUAL ELEVATING/POWER ELEVATING	HSFH/ME/PE-3K6	3,000	6	18,000	1.87*	(N/A)/34-52/42-72	36
	HSFH/ME/PE-3K	3,000	12	36,000	1.22*	(N/A)/34-52/42-72	36
	HSFH/ME/PE-4.5K	4,500	12	54,000	1.22*	(N/A)/34-52-36-60	36
	HSFH/ME/PE-6K	6,000	12	72,000	0.66*	(N/A)/34-52-40-70	48
	HSFH/ME/PE-10K	10,000	12	120,000	0.66*	(N/A)/36-72-34-86	48
	HSFH/ME/PE-16K	16,000	12	192,000	0.66*	(N/A)/50-80/40-90	54
	HSFH/ME/PE-20K	20,000	12	240,000	0.66*	(N/A)/50-80/55	54
	HSFH/ME/PE-25K	25,000	12	300,000	0.66*	(N/A)/55-85/55	54
	HSFH/ME/PE-30K	30,000	12	360,000	0.66*	(N/A)/83-131/60	54
	45-120 K LBS. MODELS ALSO AVAILABLE, PLEASE CONTACT IRCO AUTOMATION FOR INFORMATION						

*Also available with variable speed rotation.

*Due to Irco Automation Inc.'s constant product improvement, specifications are subject to change without notification.