

## JINAN TESTING EQUIPMENT IE CORPORATION

Headquarters: Floor 10<sup>th</sup> Tower A Century Fortune Plaza High Tech. Zone Jinan 250101, China.

Tel: +86-531-86510531Ext. 9

Fax: +86-531-86510535

[www.testingequipmentie.com](http://www.testingequipmentie.com)



Solutions for Materials Testing

### HLC Series Compact-design Servo-hydraulic Computer Controlled Universal Testing Machine



#### Application:

The series hydraulic universal testing machine is compact design with powerful functions.

It can realise the testing of tensile, compression, bending, shearing, hardness, low cycle for metal and non-metallic materials, which is specially designed for educational purpose, mainly for universities, colleges, and research institution etc.

#### Applied standards:

Load meets or exceeds the standards: ASTM E4, ISO7500-1, EN 10002-2, BS1610, DIN 51221 etc.

Strain measurement meets or exceeds the standards: ASTM E83, ISO 9513, EN 3846 and EN 1002-4.

#### Specifications:

Model	HLC-50	HLC-100	HLC-150/200
Max. Load(KN)	50	100	150/200
Load Measuring Range:	2%-100% of full scale;		
Load accuracy (%)	±0.5%/ ±1%		
Tensile space	350mm		
Piston stroke	200mm		
Load speed	0.5-100mm/min		

## JINAN TESTING EQUIPMENT IE CORPORATION

Headquarters: Floor 10<sup>th</sup> Tower A Century Fortune Plaza High Tech. Zone Jinan 250101, China.

Tel: +86-531-86510531Ext. 9

Fax: +86-531-86510535

[www.testingequipmentie.com](http://www.testingequipmentie.com)

Return speed	100mm/min	
Compression space	600mm	
Distance between columns	360mm	
Tensile grip for specimen information	Round: Ø4-20mm Flat: 0-21mm	Round: Ø9-26mm Flat: 0-21mm
Compression platen	Ø100mm	
Dimensions	750x510x1610mm	
Net weight	180kg	200kg

### Standard Accessories

- Tensile test attachment



Inserts for flat specimen



Inserts for round specimen

- Compression test attachment:

1 set

Platen dia.100mm, Thickness: 25mm



- Flexural test attachment:

1 set



- Electronic Extensometer:

1 pc

Gauge length: 50mm; Percentage Elongation 10% Precision 1% of full scale

## JINAN TESTING EQUIPMENT IE CORPORATION

Headquarters: Floor 10<sup>th</sup> Tower A Century Fortune Plaza High Tech. Zone Jinan 250101, China.

Tel: +86-531-86510531 Ext. 9

Fax: +86-531-86510535

[www.testingequipmentie.com](http://www.testingequipmentie.com)



Solutions for Materials Testing



- Photoelectric encoder:

1 pc



- Load cell:

1pc

Flat load cell 50/100/150/200kN, Tensile & Compression type,



- Computer & software & printer

1 set

Computer: Dell or Lenovo;

Software: English Version (For details, please refer Annex-1);

Printer: HP Color ink



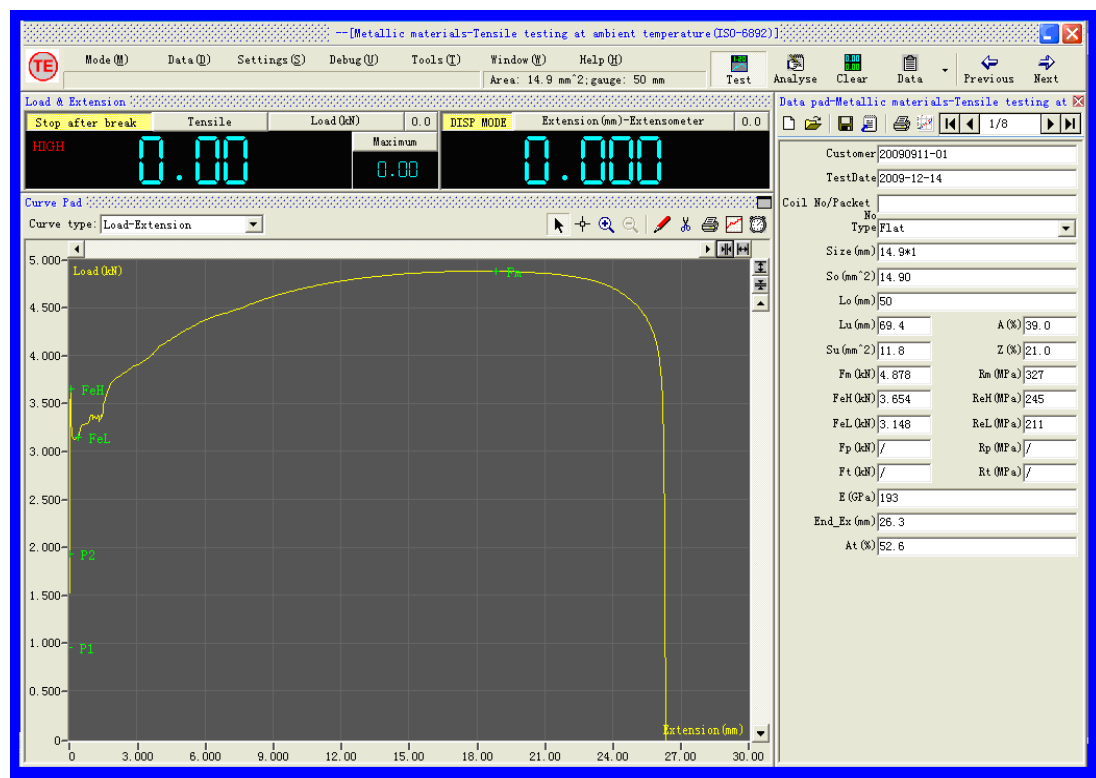
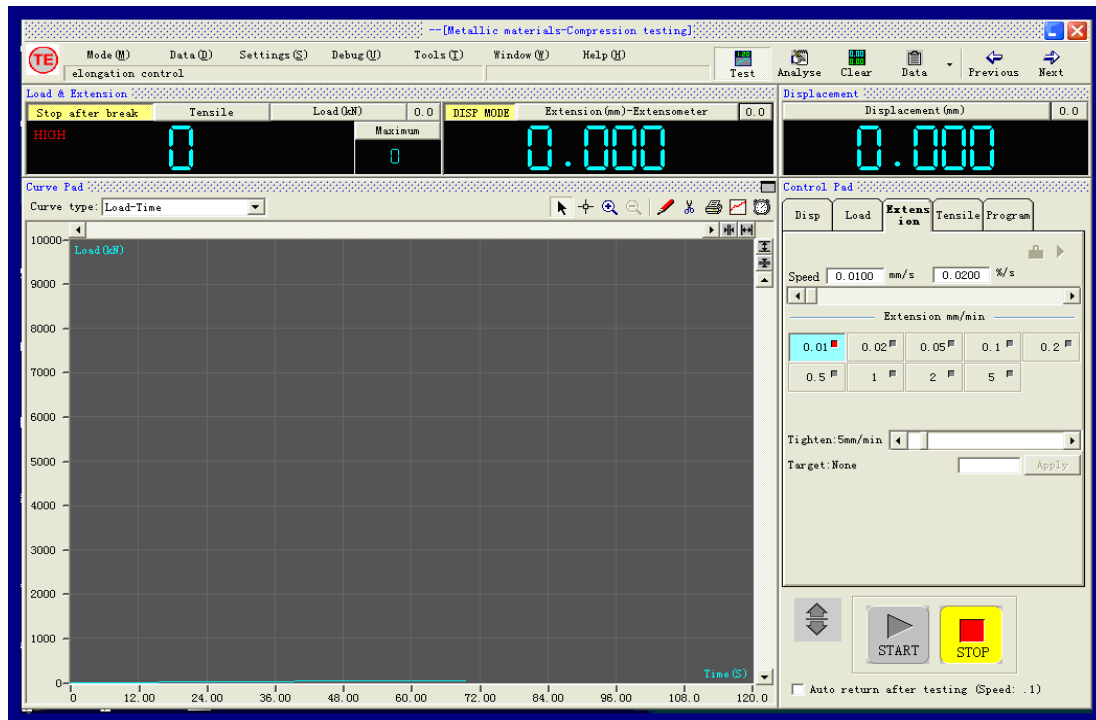
- Tool kit:

1 set

## Annex-1

### Features of TE Measuring & Control Software

TE software refers to the software characteristics of the top manufacturers of testing machine in the world and proposals of various testing requirements from the end users, and combines all the advantages of former versions of software with lots of new features. Optimized software structure makes the testing operation easy, convenient and powerful.



## JINAN TESTING EQUIPMENT IE CORPORATION

Headquarters: Floor 10<sup>th</sup> Tower A Century Fortune Plaza High Tech. Zone Jinan 250101, China.

Tel: +86-531-86510531 Ext. 9

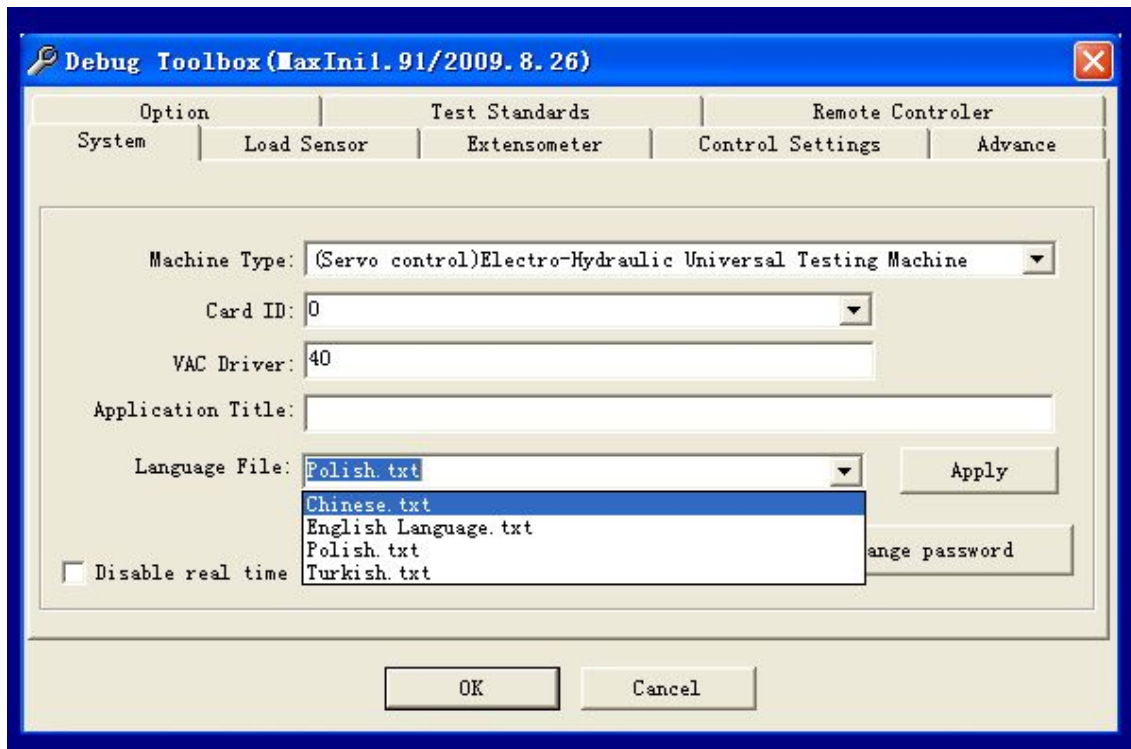
Fax: +86-531-86510535

[www.testingequipmentie.com](http://www.testingequipmentie.com)



Solutions for Materials Testing

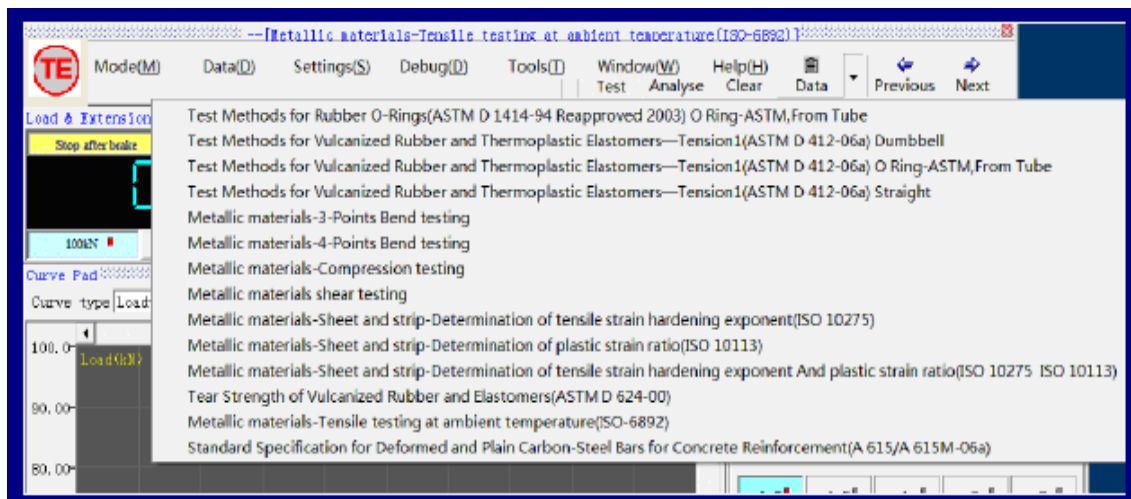
The control modes, test data and curves can be displayed in real time in the main interface and can be shifted at any time.



The deep-seated parameters of software are contained in Debug Toolbox

Multi-language function:

With the flexible language edited function, it can support multi-language such as English, Chinese etc. and you can translate the software language into the native language by yourself.



Software supports all kinds of popular testing standards i.e. ISO, ASTM, BS EN, DIN, JIS, GB etc. Users can modify and add own testing standards and methods.

# JINAN TESTING EQUIPMENT IE CORPORATION

Headquarters: Floor 10<sup>th</sup> Tower A Century Fortune Plaza High Tech. Zone Jinan 250101, China.

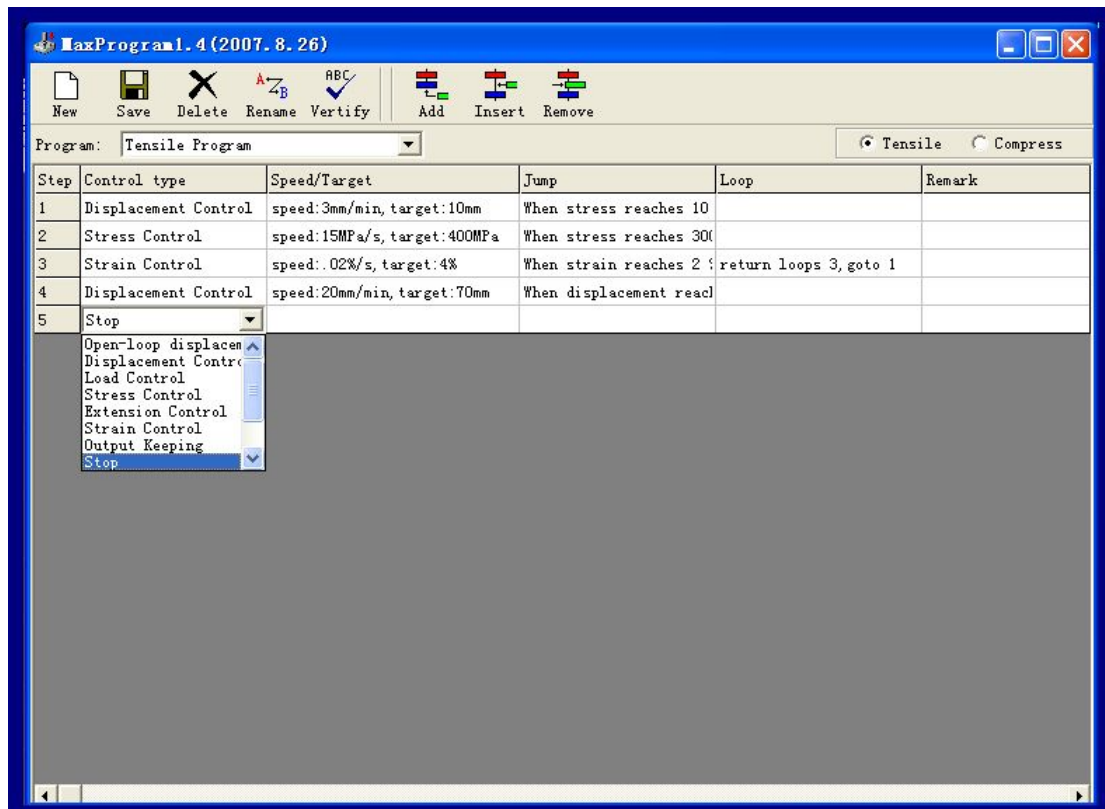
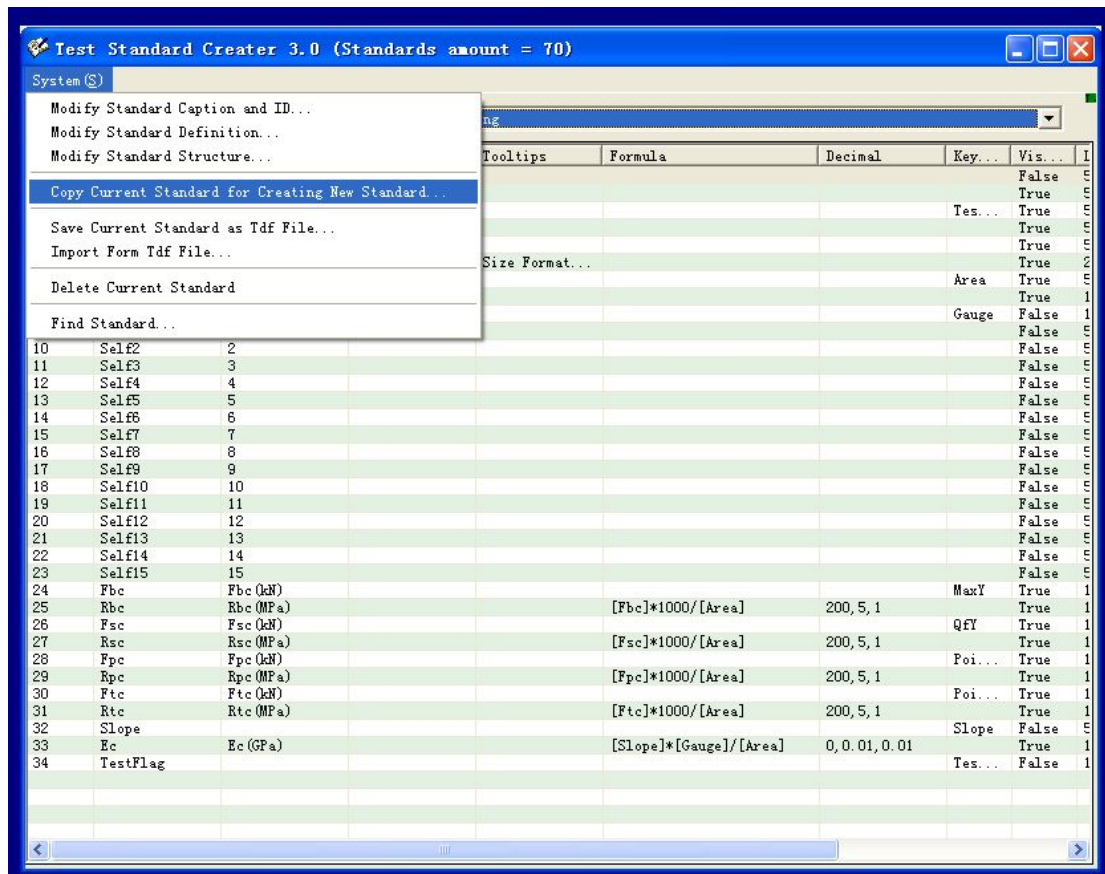
Tel: +86-531-86510531 Ext. 9

Fax: +86-531-86510535

[www.testingequipmentie.com](http://www.testingequipmentie.com)



Solutions for Materials Testing





## JINAN TESTING EQUIPMENT IE CORPORATION

Headquarters: Floor 10<sup>th</sup> Tower A Century Fortune Plaza High Tech. Zone Jinan 250101, China.

Tel: +86-531-86510531 Ext. 9

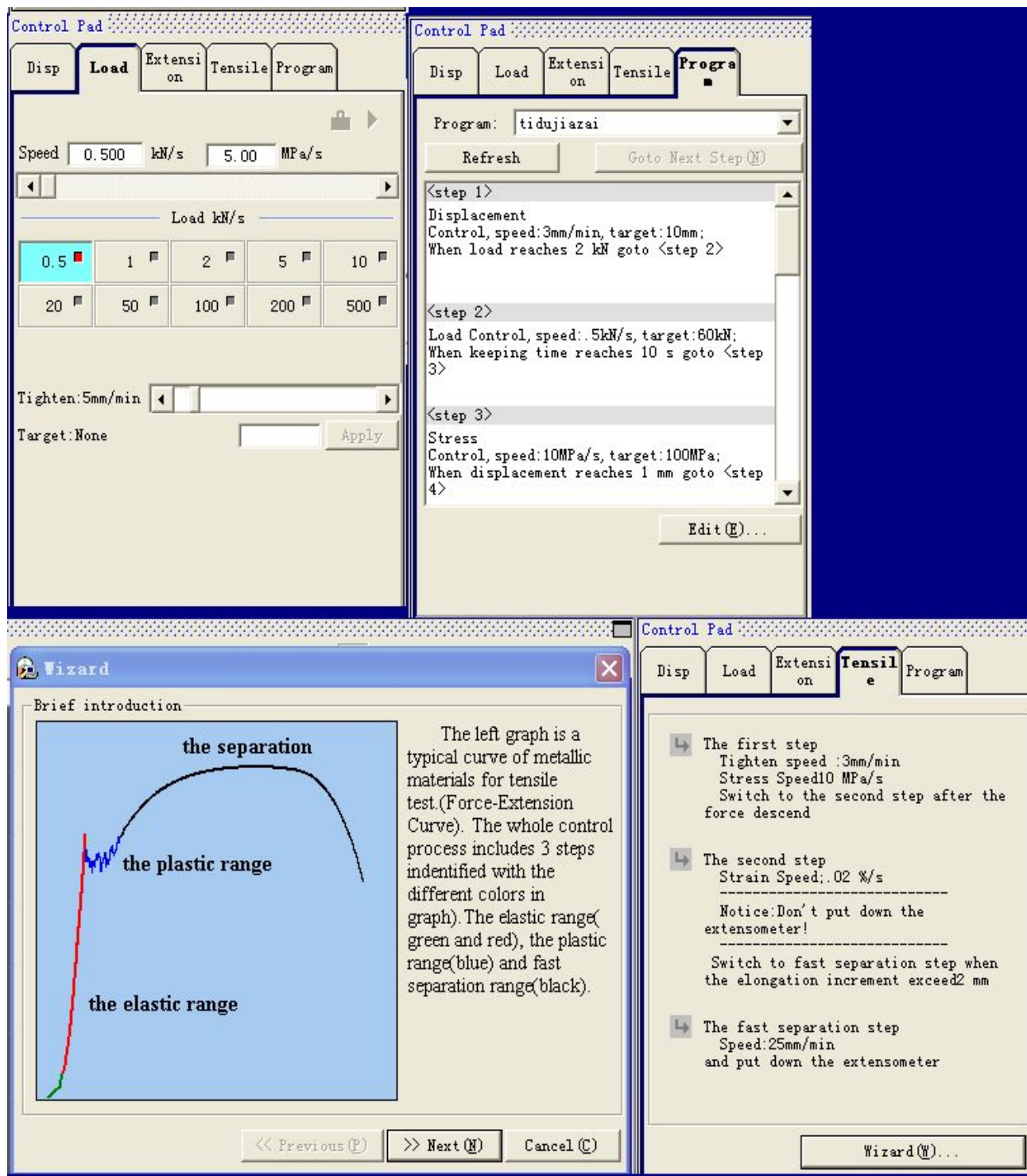
Fax: +86-531-86510535



Solutions for Materials Testing

[www.testingequipmentie.com](http://www.testingequipmentie.com)

MaxProgram Editor possesses of multiple full digital control modes, i.e Displacement control, Stress (Load) control, Strain (Deformation) control, Low cycle control. User can edit the most complex and logical procedure by MaxProgram Editor. The combination of above functions can meet all kinds of routine test purpose.



Through the Tensile Program Editor, user can setup test steps according to the requirements of standards.

# JINAN TESTING EQUIPMENT IE CORPORATION

Headquarters: Floor 10<sup>th</sup> Tower A Century Fortune Plaza High Tech. Zone Jinan 250101, China.

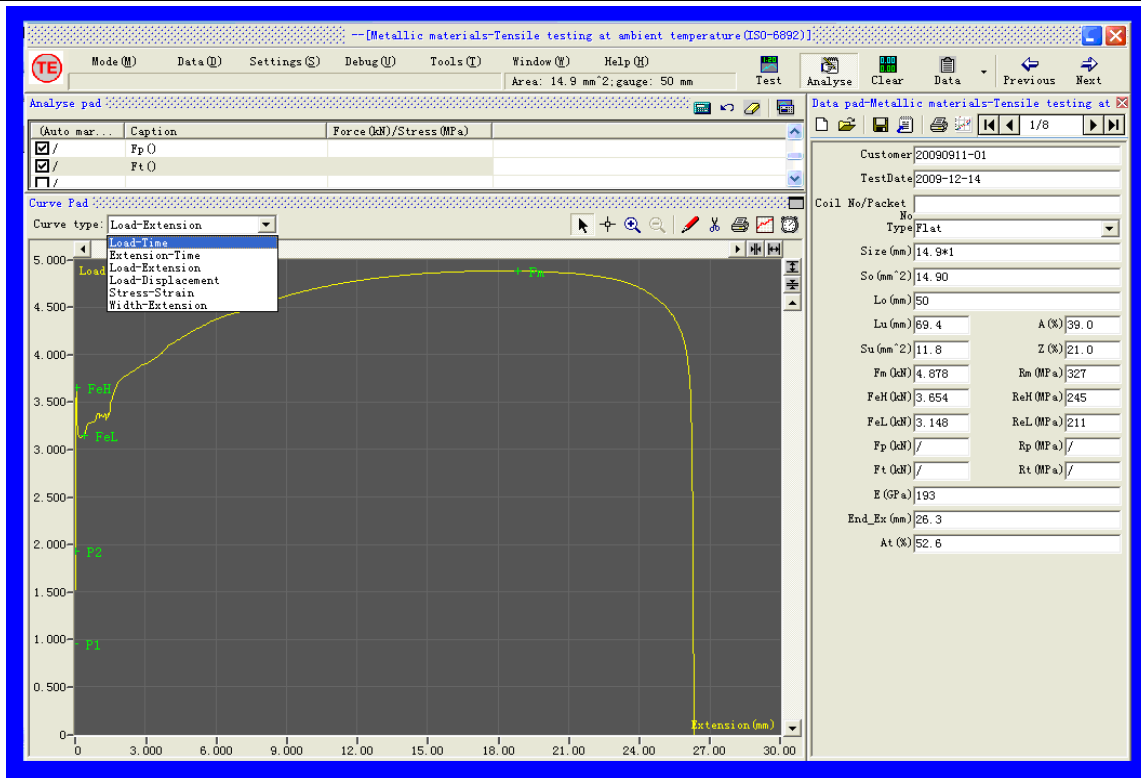
Tel: +86-531-86510531 Ext. 9

Fax: +86-531-86510535

[www.testingequipmentie.com](http://www.testingequipmentie.com)



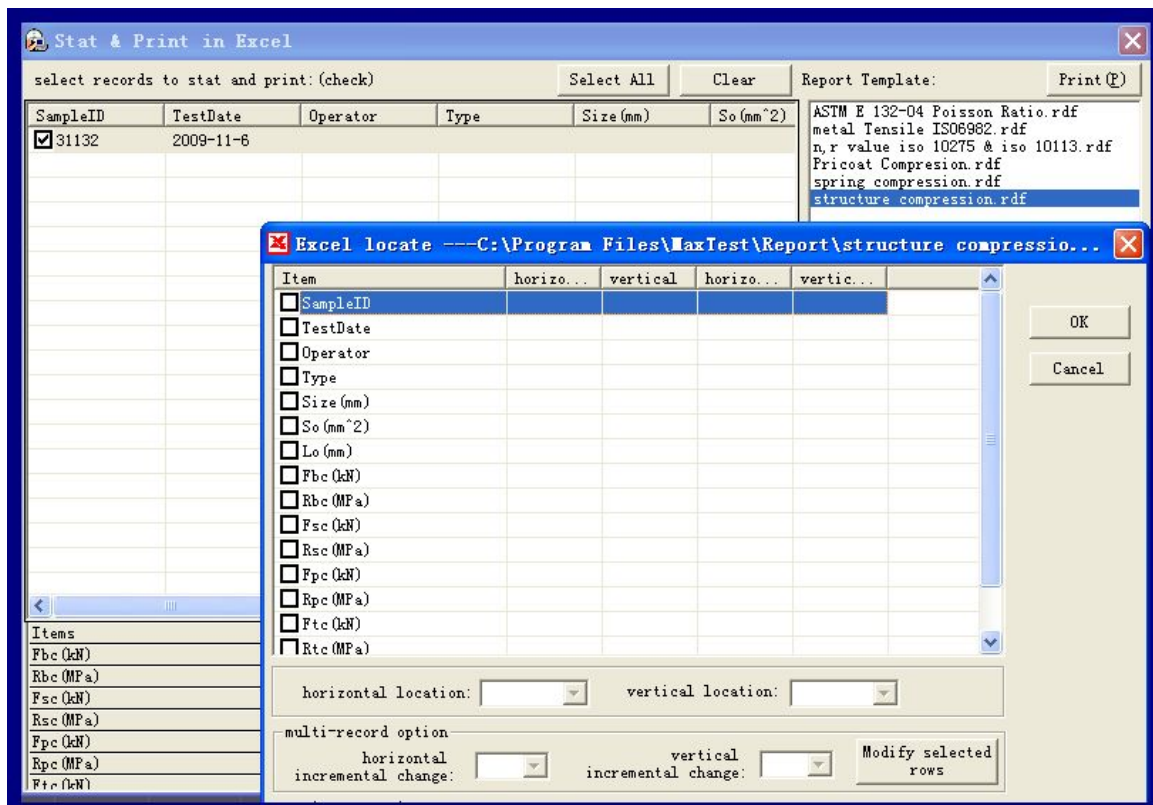
Solutions for Materials Testing



Multiple curves function in real time display including Load-Extension, Load-Displacement, Stress-Strain, Load-Time, Extension-Time, and Width-Extension.

Characteristic points such as Elastic Modulus, Yield points, Rp, Rm etc. can be marked on the curves, for a highlighted and visual observation.

Test result can be obtained automatically and also it can be got from the test curves manually.





**JINAN TESTING EQUIPMENT IE CORPORATION**Headquarters: Floor 10<sup>th</sup> Tower A Century Fortune Plaza High Tech. Zone Jinan 250101, China.

Tel: +86-531-86510531 Ext. 9

Fax: +86-531-86510535



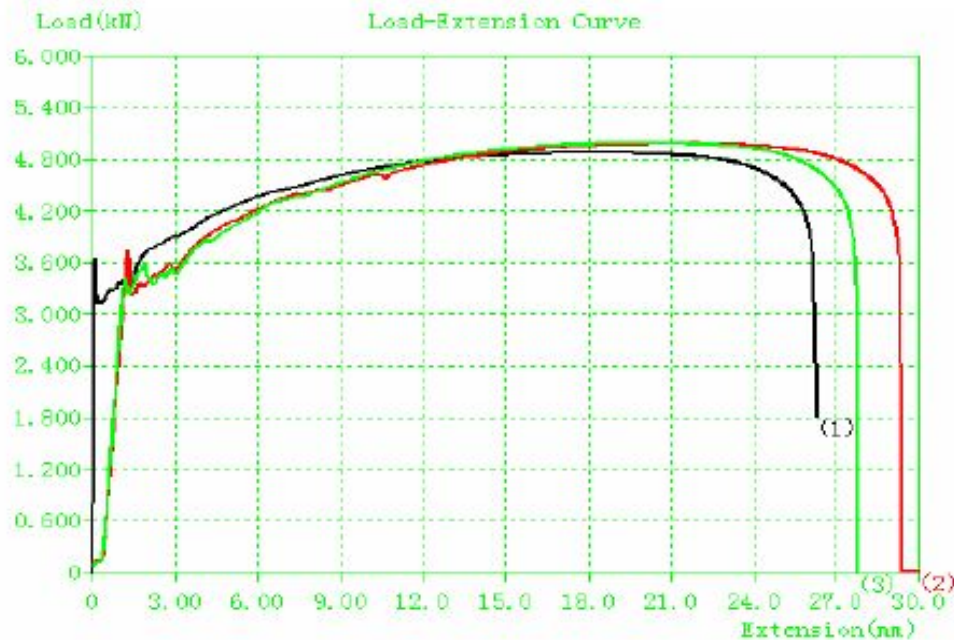
Solutions for Materials Testing

[www.testingequipmentie.com](http://www.testingequipmentie.com)

TE software contains all kinds of Report Templates. Customer can design various testing reports according to the requirements. Test result and curve can be printed in Excel or the auto-creating report template.

**Metallic materials -- Tensile testing at ambient temperature****ISO 6892 : 1998**

TestDate	2009-9-11			Operator	LW			
Temperature	20℃			Size(mm)	14.9*1			
Lo(mm)	50			So(mm^2)	14.9			
PrintID	SampleID	Rm(MPa)	ReH(Mpa)	ReL(MPa)	Rp(MPa)	E(GPa)	A(%)	Z(%)
1	QD01	327	245	210	233	193	39	21
2	QD02	334	251	223	234	198	42	23
3	QD03	335	240	229	228	205	38	27
4								
Max value		335	251	229	234	205	42	27
Min value		327	240	210	228	193	38	21
Average value		332	245.3333	220.6667	231.6667	198.6667	39.6667	23.667



Print Date:

2009-12-8

## JINAN TESTING EQUIPMENT IE CORPORATION

Headquarters: Floor 10<sup>th</sup> Tower A Century Fortune Plaza High Tech. Zone Jinan 250101, China.

Tel: +86-531-86510531 Ext. 9

Fax: +86-531-86510535

[www.testingequipmentie.com](http://www.testingequipmentie.com)



Solutions for Materials Testing

DISP MODE	Extension (mm)-Extensometer	0.0
0.000		
DISP MODE	Large Extension (mm)	0.0
0.000		
DISP MODE	Extension-MFL (mm)	0.0
0.000		
Init MFL		
Upper position	50	Gauge (mm) 40
Measurement begin		Locate
Measurement ends		Clear

Besides the clip-on Extensometer, TE software supports Long Travel Extensometer, Full Automatic Extensometer, video Extensometer, laser Extensometer, and it can be added up to 8 Extensometers

Select load sensor units

Select

☐ 5kN

☒ 20kN

☐ 100kN

☐ 300kN

OK

Cancel

TE software also supports four load cells.