

## JINAN TESTING EQUIPMENT IE CORPORATION

Headquarters: Floor 10<sup>th</sup> Tower A Century Fortune Plaza High Tech. Zone Jinan 250101, China.

Tel: +86-531-86510531(Ext.9) Fax: +86-531-86510535

[www.testingequipmentie.com](http://www.testingequipmentie.com)

### WEW-D Series Computer Screen Display Hydraulic Universal Testing Machine



#### Applications & Functions:

WEW-D Series Computer Screen Display Hydraulic Universal Testing Machine is suitable to test various metallic & non-metallic materials for tension, compression, bending and shearing strength. It can be capable of testing the characters of materials on physical & technology properties. The testing data can be transferred to the computer with a RJ45 net cable through the digital controller.

#### Applied Standard:

- ✧ Load meets or exceeds the following standards: ASTM E4, ISO7500-1, EN 10002-2, BS1610, DIN 51221.
- ✧ Strain measurement meets or exceeds the following standards: ASTM E83, ISO 9513, BS 3846 and EN 10002-4
- ✧ ASTM C39: Standard Test Method for Compressive Strength of Cylindrical Concrete Specimens

#### Load frame

- ✧ Rigid two-column & two -lead screw construction & compact design
- ✧ Dual work-space: Upper for tension, Lower for compression or bending tests
- ✧ Movable lower crosshead providing exceptional ease of operation



## JINAN TESTING EQUIPMENT IE CORPORATION

Headquarters: Floor 10<sup>th</sup> Tower A Century Fortune Plaza High Tech. Zone Jinan 250101, China.

Tel: +86-531-86510531(Ext.9) Fax: +86-531-86510535

[www.testingequipmentie.com](http://www.testingequipmentie.com)

- ✧ With open front hydraulic wedge grips for easy change of inserts and specimen loading
- ✧ Integrated displacement photoelectric encoder
- ✧ Cylinder mounted at the bottom of the machine
- ✧ Manual operation

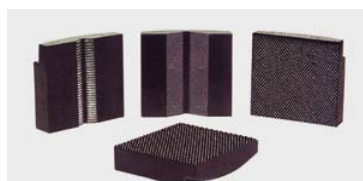
### Technical Specifications:

Specifications	WEW-200/300D	WEW-400/600D	WEW-1000D	WEW-2000D
Max. Load Capacity (kN)	200/300	400/600	1000	2000
Load Accuracy	≤1% of 2%-100% of F.S.			
Displacement Resolution (mm)	0.01			
Tensile space (mm)	50-700	70-810	80-850	100-850
Compression space (mm)	0-700	0-720	0-765	0-750
Clearance between columns (mm)	500	620	710	600
Piston stroke (mm)	200	250	250	250
Crosshead moving speed (mm/min)	0-100	0-100	0-80	0-80
Load measuring mode	Oil Transducer/Load cell			
Clamping jaws for round specimens (mm)	Φ10-20, Φ20-32	Φ13-26, Φ26-40	Φ13-26, Φ26-40, Φ40-60	Φ20-50, Φ50-70
Clamping jaws for flat specimens (mm)	0-10, 10-20	0-15, 15-30	0-40	0-50
Width of clamping jaws (mm)	50	82	82	100
Compression plate dimension (mm)	Φ120	170x170x25	205x205x30	240x240x60
Roller diameter of bending fixture (mm)	30	50	50	50
Max. Clearance between supports (mm)	410	660	700(Φ20)	600
Radius of punch tops (mm)	30	30	30	50
Power (kW)	2kW, 380V,3ph	2.2kW, 380V,3ph	2.2kW, 380V,3ph	6kW, 380V,3ph
Load Frame dimension (mm)	800x500x1980	950x640x2500	980x650x2500	1200x850x2900
Weight (kg)	2000	2500	3300	5500

### Standard Accessories:

#### 1. Hydraulic wedge tensile test fixture

Inserts for round specimen / Inserts for flat specimen



#### 2. Bending test fixture

**JINAN TESTING EQUIPMENT IE CORPORATION**

Headquarters: Floor 10<sup>th</sup> Tower A Century Fortune Plaza High Tech. Zone Jinan 250101, China.

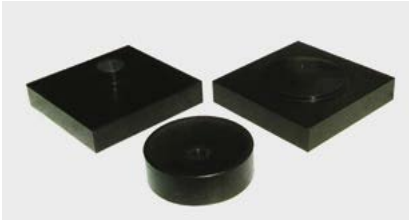
Tel: +86-531-86510531(Ext.9) Fax: +86-531-86510535

[www.testingequipmentie.com](http://www.testingequipmentie.com)

---



3. Compression fixture



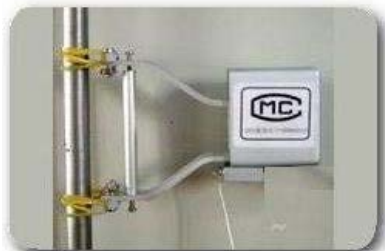
4. Load cell

Flat spoke type load cell, Tensile & Compression type, accuracy  $\pm 0.5\%$ ;



5. Electronic extensometer

Generally offer gauge length 50mm, travel 25 mm.



6. High precision photoelectric encoder

Measuring the displacement



7. High pressure hydraulic pack

Hydraulic pack is for loading and clamping specimen hydraulically.

**JINAN TESTING EQUIPMENT IE CORPORATION**

Headquarters: Floor 10<sup>th</sup> Tower A Century Fortune Plaza High Tech. Zone Jinan 250101, China.

Tel: +86-531-86510531(Ext.9) Fax: +86-531-86510535

[www.testingequipmentie.com](http://www.testingequipmentie.com)

---



**8. Computer system with English version software (19in LCD)**

For software please see ANNEX-1



**9. Hand control box**

It sticks on the column of the machine by magnet, and can move up and down freely along the column. It can control up-and-down of crosshead and clamp the specimen hydraulically.

## JINAN TESTING EQUIPMENT IE CORPORATION

Headquarters: Floor 10<sup>th</sup> Tower A Century Fortune Plaza High Tech. Zone Jinan 250101, China.

Tel: +86-531-86510531(Ext.9) Fax: +86-531-86510535

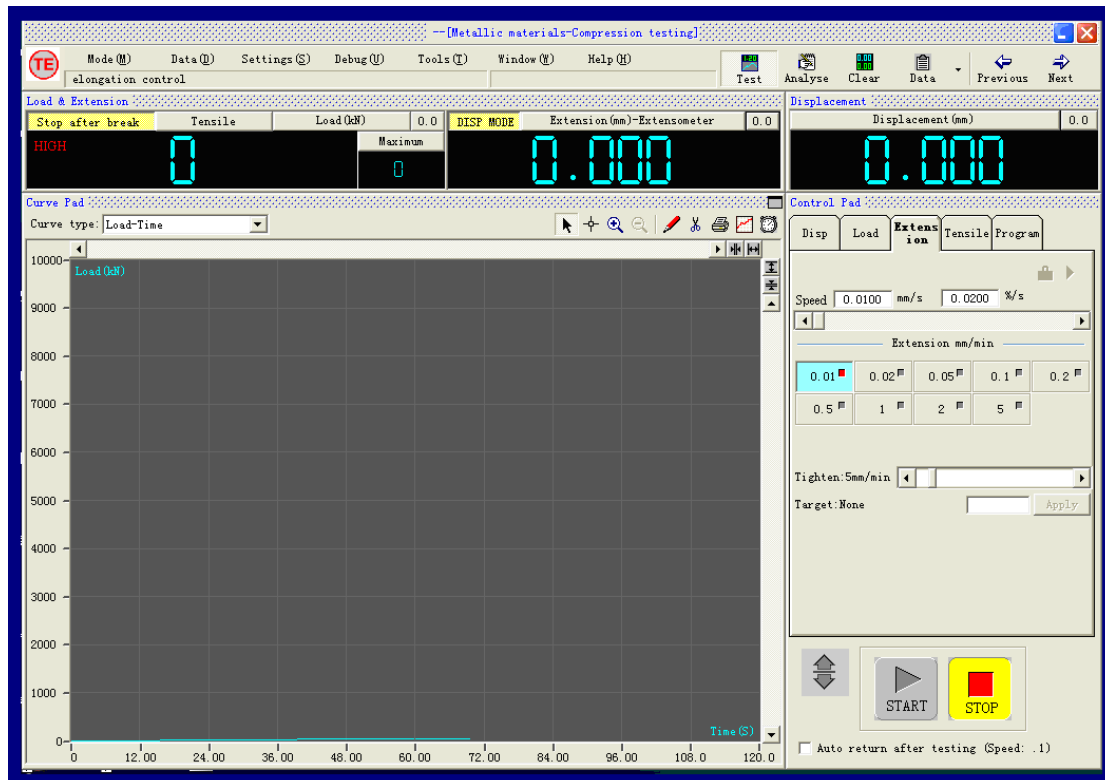
[www.testingequipmentie.com](http://www.testingequipmentie.com)

### ANNEX-1: Software Introduction

#### Features of Measuring & Control Software

##### 1. Application & Features:

TE software refers to the software characteristics of the top manufacturers of testing machine in the world and proposals of various testing requirements from the end users, and combines all the advantages of former versions of software with lots of new features as following. Optimized software structure makes the testing operation easy, convenient and powerful.



- ✧ Integrated full digital electro-hydraulic servo close-loop control, data processing with data analysis
- ✧ Possess multi kinds of full digital close-loop control modes, such as test load, displacement, stress and strain. Different control modes can be switched each other freely and smoothly.
- ✧ Enjoy strong “programming” function of integrated test procedures, programmable steps can be up to 100 steps, and it can be also extended to complete the compilation of arbitrary complicated and control mode switch test procedures.
- ✧ Software design aims to rapidity and convenience of test operation. Also adopt special design method to meet batch technology tests.
- ✧ Software is managed by multi levels, and expert user can use all system parameters, which combined the flexibility of software usage and safety & reliability of the system.
- ✧ Automatic data processing, processing method complies with multi international standards, such as ISO6892-1998, EN10002-1:2001 and ASTM
- ✧ Multi international units are adopted, such as SI, metric system unit and British measurement, etc.
- ✧ Maintain multi language conversion interface, so the system can be applied under conditions of various kinds of languages conveniently (Customized)

## JINAN TESTING EQUIPMENT IE CORPORATION

Headquarters: Floor 10<sup>th</sup> Tower A Century Fortune Plaza High Tech. Zone Jinan 250101, China.

Tel: +86-531-86510531(Ext.9) Fax: +86-531-86510535

[www.testingequipmentie.com](http://www.testingequipmentie.com)

- ✧ Possess function of manual data processing, which fits to various kinds of complicated data processing for customer.
- ✧ Offer test reports, which can be stored, printed and re-analyzed.
- ✧ Test data is stored as the form of "text mode", and any general commercial data processing software can reprocess test data.
- ✧ Rich & perfect assorted test curves
- ✧ Possess the function of integrated document operating system, for example, test report, test parameter, system parameters can be stored as the form of "text mode".
- ✧ Compatible with different commercial printers
- ✧ Control system is based on software system, so upgrade is easy.

## 2. Software & hardware configuration

This software is used along with special PCI/ISA electro-hydraulic servo measuring & control card.

Computer:

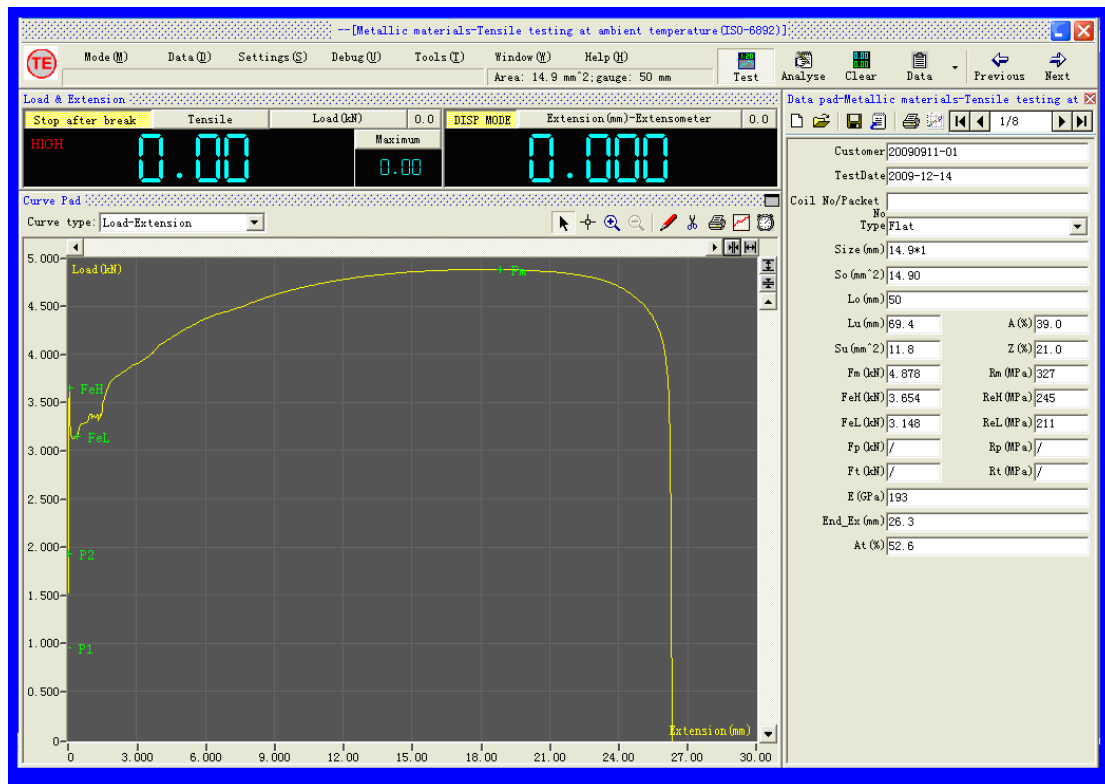
- 1). Exceed 586 CPU
- 2). Surpass 1G memory
- 3). Over 160G hard disc
- 4). Display should be set at pixel of 1024\*768

Operation system: Windows Vista/XP/2000, Support Windows98 (customized)

Various kinds of commercial printer and driving programs

## 3. Interfaces of software:

Various kinds of hydraulic universal testing machine



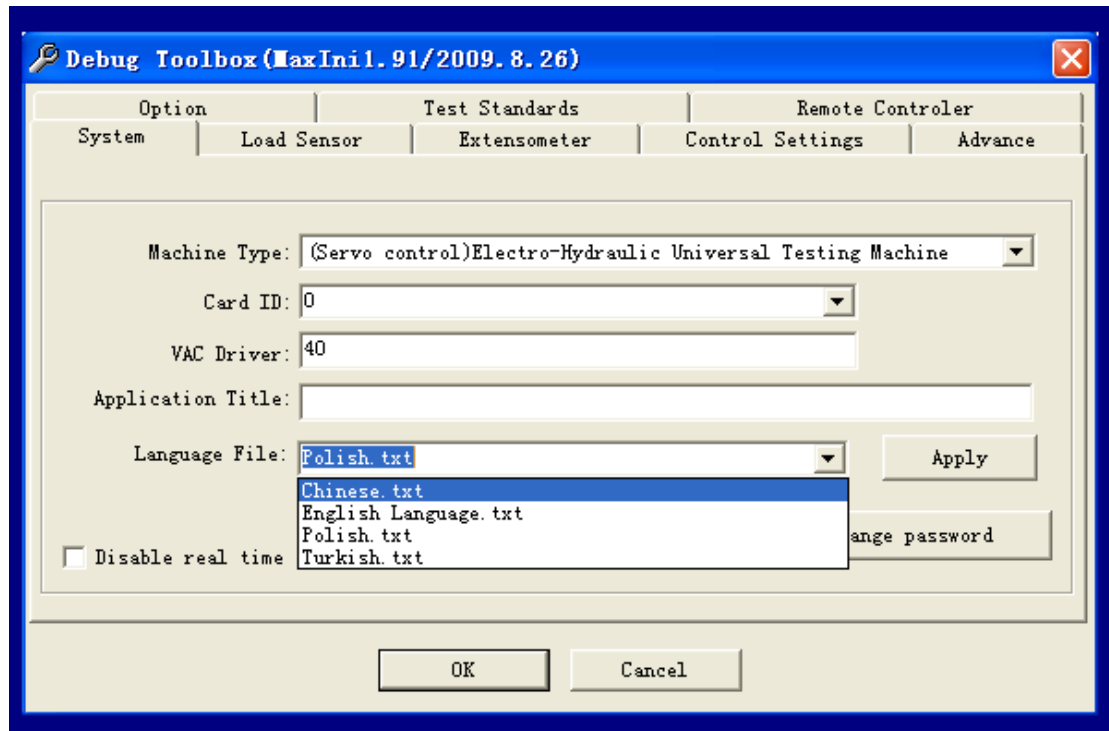
The control modes, test data and curves can be displayed in real time in the main interface and can be shifted at any time.

## JINAN TESTING EQUIPMENT IE CORPORATION

Headquarters: Floor 10<sup>th</sup> Tower A Century Fortune Plaza High Tech. Zone Jinan 250101, China.

Tel: +86-531-86510531(Ext.9) Fax: +86-531-86510535

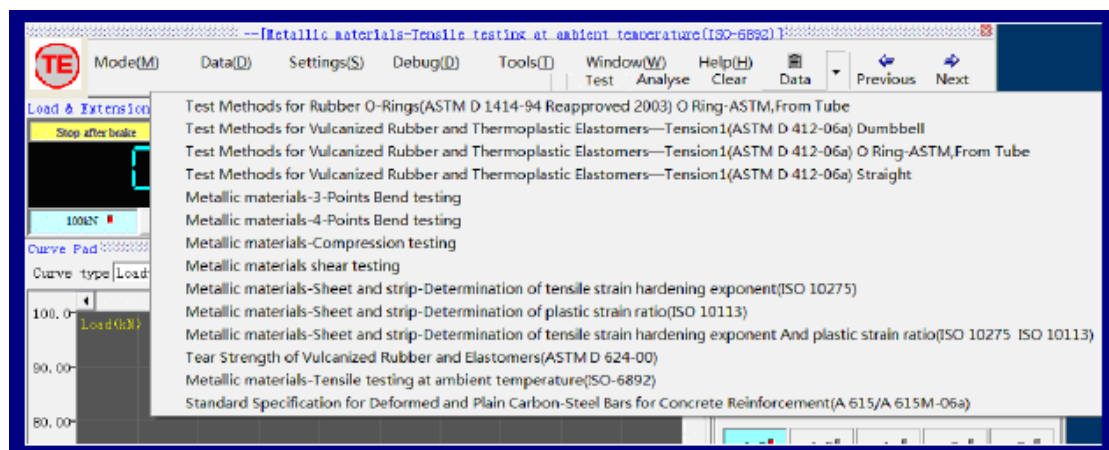
[www.testingequipmentie.com](http://www.testingequipmentie.com)



The deep-seated parameters of software are contained in Debug Toolbox

Multi-language function:

With the flexible language edited function, it can support multi-language such as English, Chinese etc. and you can translate the software language into the native language by yourself.



Software supports all kinds of popular testing standards i.e. ISO, ASTM, BS EN, DIN, JIS, GB etc.

Users can modify and add own testing standards and methods.

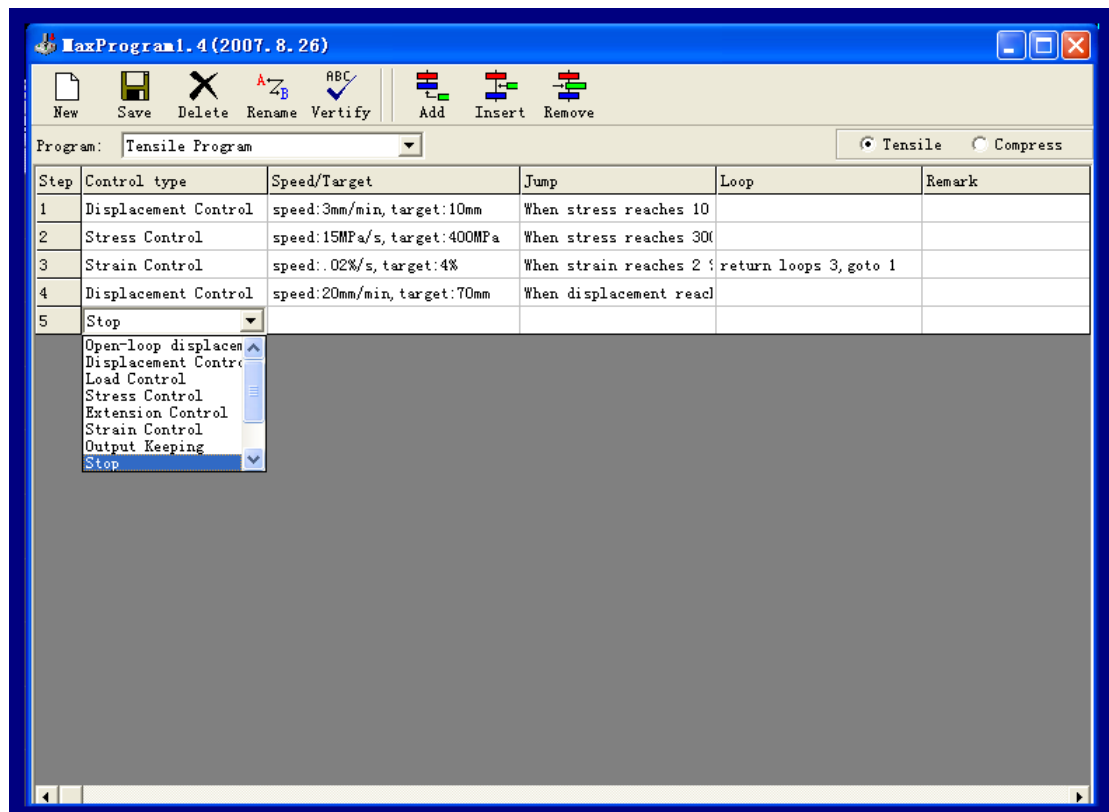
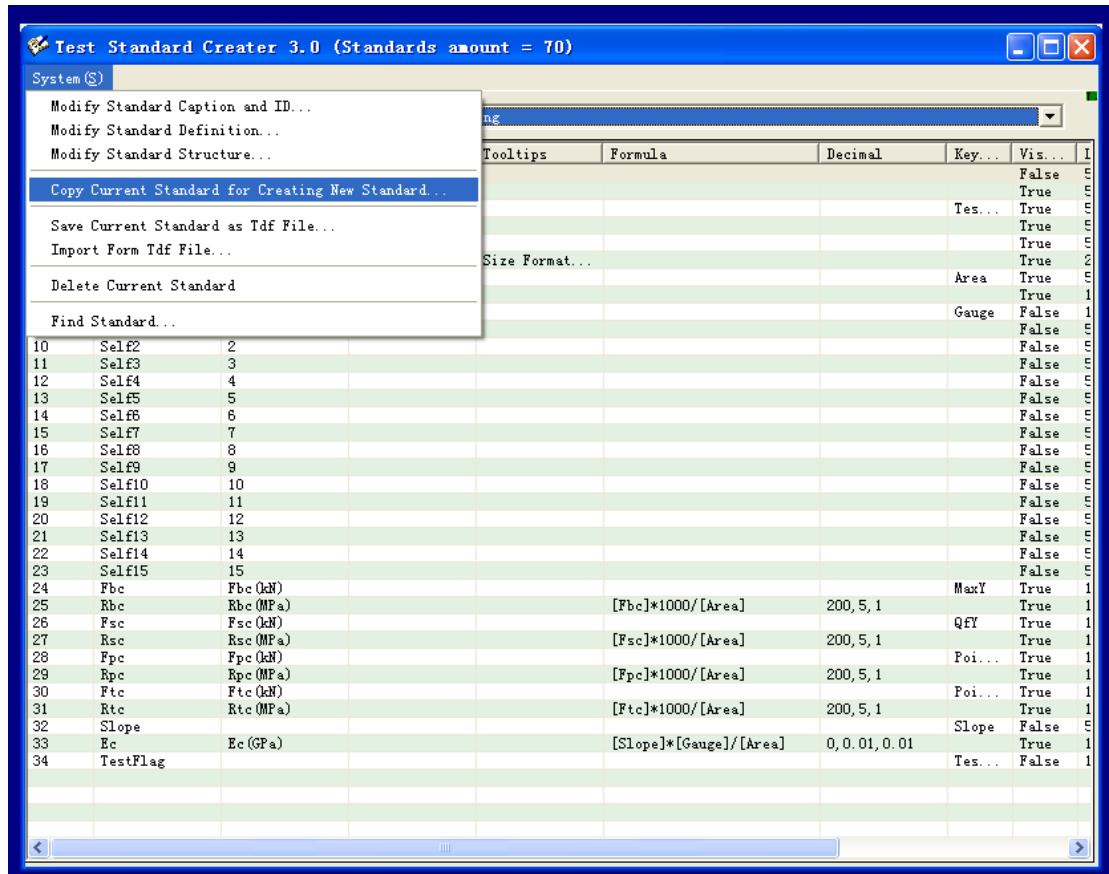


# JINAN TESTING EQUIPMENT IE CORPORATION

Headquarters: Floor 10<sup>th</sup> Tower A Century Fortune Plaza High Tech. Zone Jinan 250101, China.

Tel: +86-531-86510531(Ext.9) Fax: +86-531-86510535

[www.testingequipmentie.com](http://www.testingequipmentie.com)





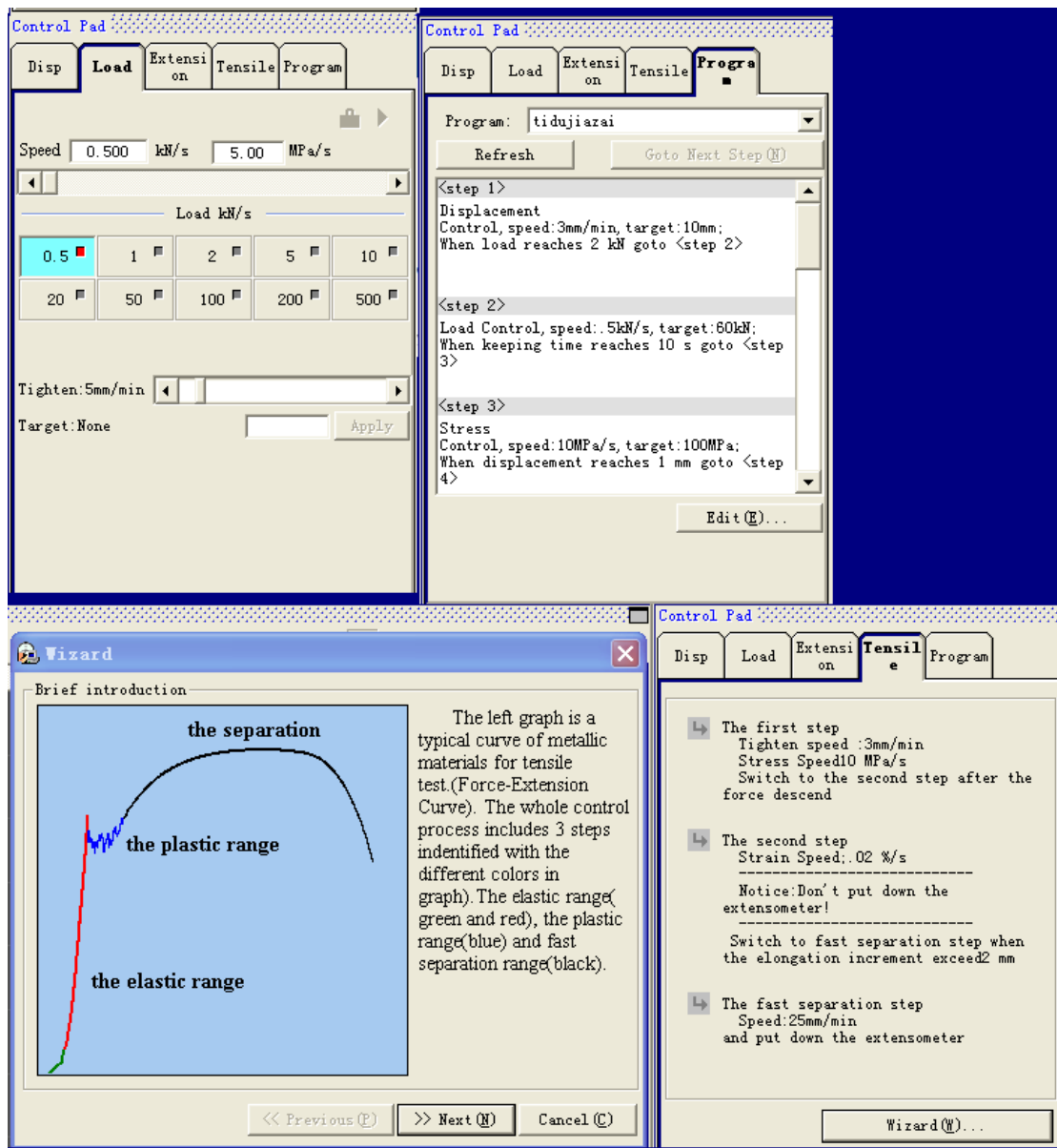
## JINAN TESTING EQUIPMENT IE CORPORATION

Headquarters: Floor 10<sup>th</sup> Tower A Century Fortune Plaza High Tech. Zone Jinan 250101, China.

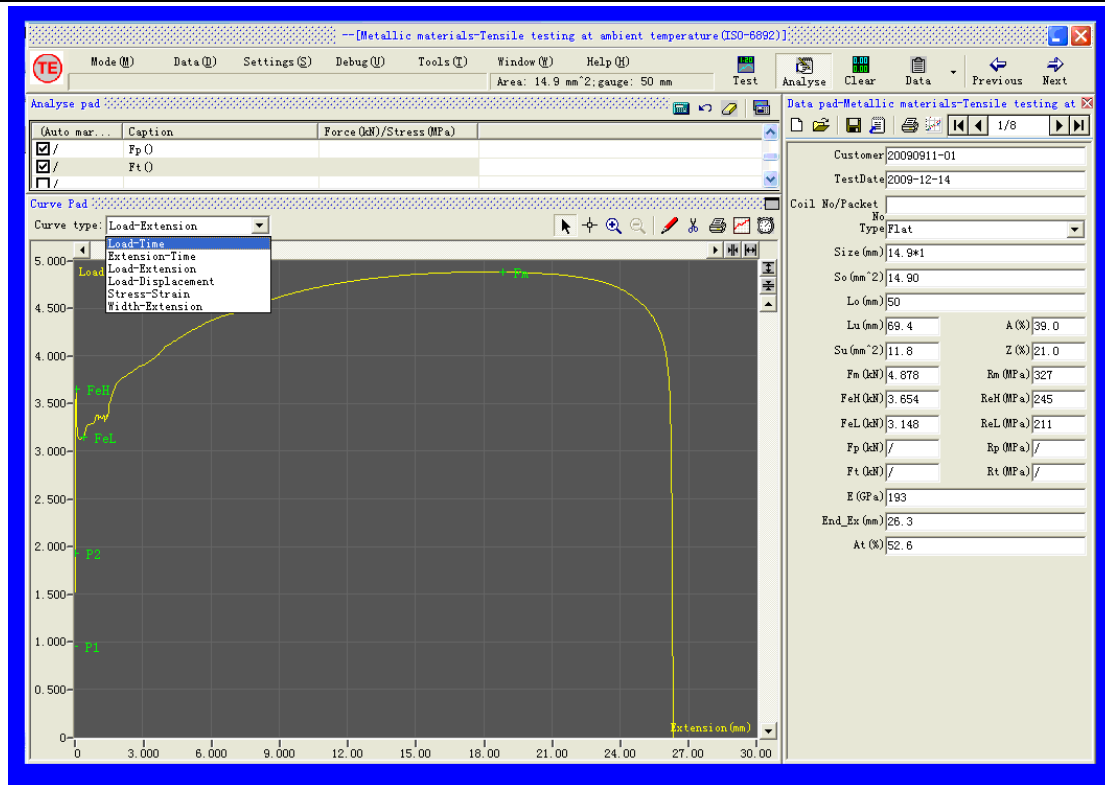
Tel: +86-531-86510531(Ext.9) Fax: +86-531-86510535

[www.testingequipmentie.com](http://www.testingequipmentie.com)

MaxProgram Editor possesses of multiple full digital control modes, i.e Displacement control, Stress (Load) control, Strain (Deformation) control, Low cycle control. User can edit the most complex and logical procedure by MaxProgram Editor. The combination of above functions can meet all kinds of routine test purpose.



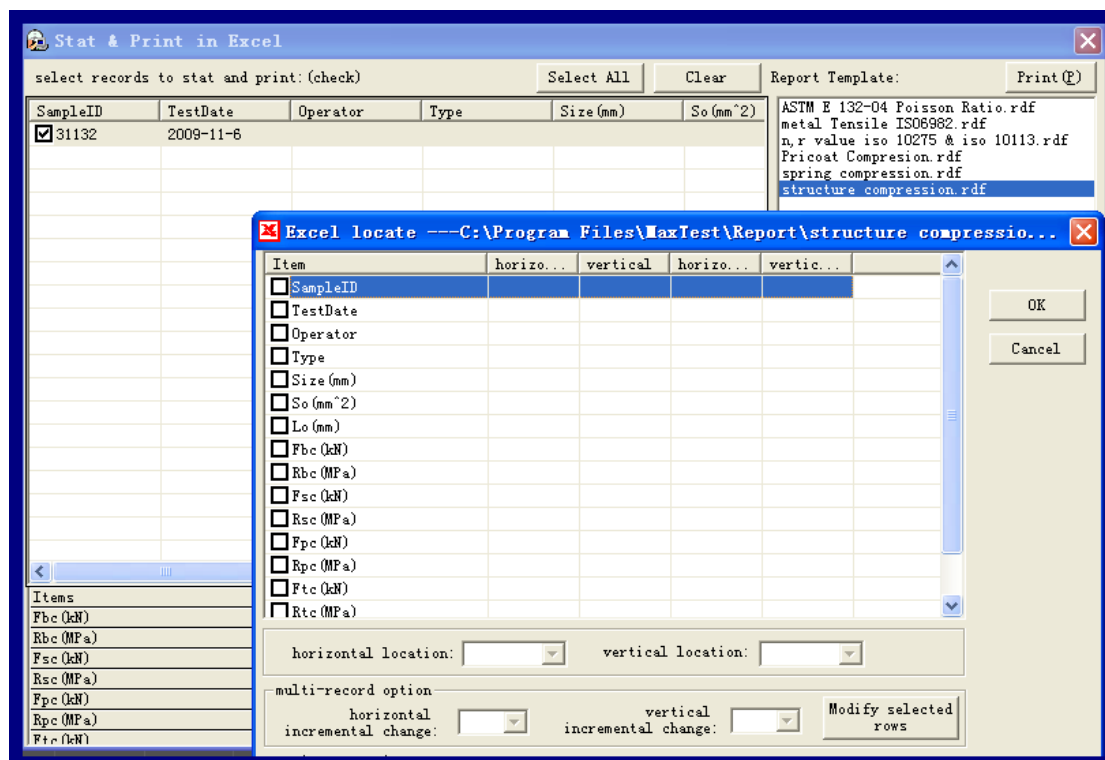
Through the Tensile Program Editor, user can setup test steps according to the requirements of standards.



Multiple curves function in real time display including Load-Extension, Load-Displacement, Stress-Strain, Load-Time, Extension-Time, and Width-Extension.

Characteristic points such as Elastic Modulus, Yield points,  $R_p$ ,  $R_m$  etc. can be marked on the curves, for a highlighted and visual observation.

Test result can be obtained automatically and also it can be got from the test curves manually.



# JINAN TESTING EQUIPMENT IE CORPORATION

Headquarters: Floor 10<sup>th</sup> Tower A Century Fortune Plaza High Tech. Zone Jinan 250101, China.

Tel: +86-531-86510531(Ext.9) Fax: +86-531-86510535

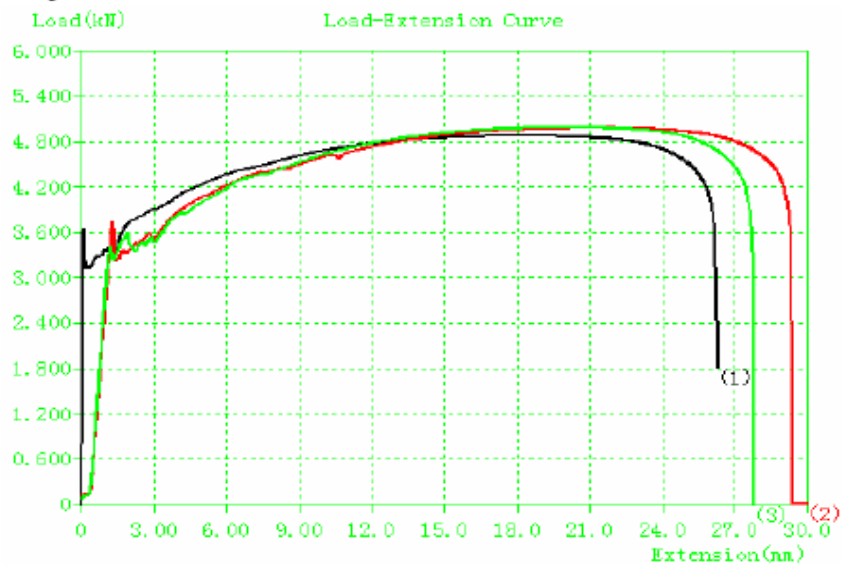
[www.testingequipmentie.com](http://www.testingequipmentie.com)

TE software contains all kinds of Report Templates. Customer can design various testing reports according to the requirements. Test result and curve can be printed in Excel or the auto-creating report template.

## Metallic materials -- Tensile testing at ambient temperature

ISO 6892 : 1998

TestDate	2009-9-11			Operator	LW			
Temperature	20℃			Size(mm)	14.9*1			
Lo(mm)	50			So(mm^2)	14.9			
PrintID	SampleID	Rm(MPa)	ReH(Mpa)	ReL(MPa)	Rp(MPa)	E(GPa)	A(%)	Z(%)
1	QD01	327	245	210	233	193	39	21
2	QD02	334	251	223	234	198	42	23
3	QD03	335	240	229	228	205	38	27
4								
Max value		335	251	229	234	205	42	27
Min value		327	240	210	228	193	38	21
Average value		332	245.3333	220.6667	231.6667	198.6667	39.6667	23.667



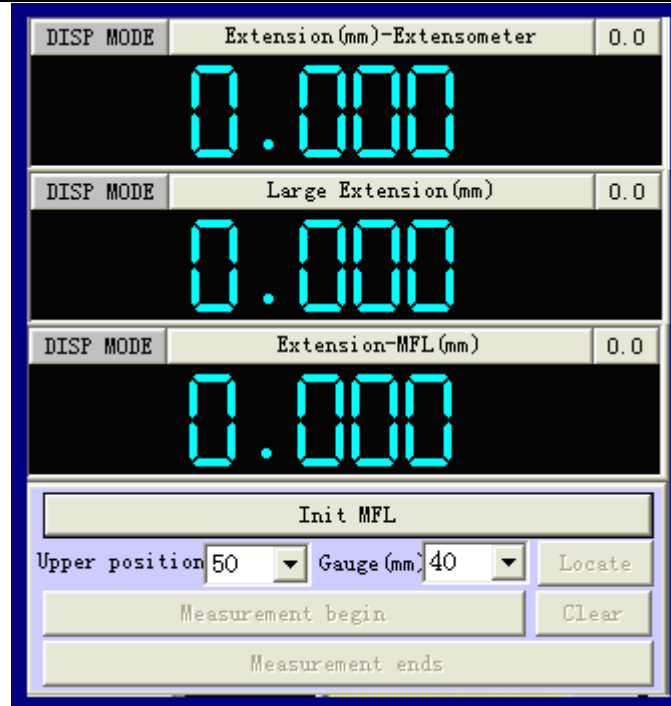
Print Date: 2009-12-8

# JINAN TESTING EQUIPMENT IE CORPORATION

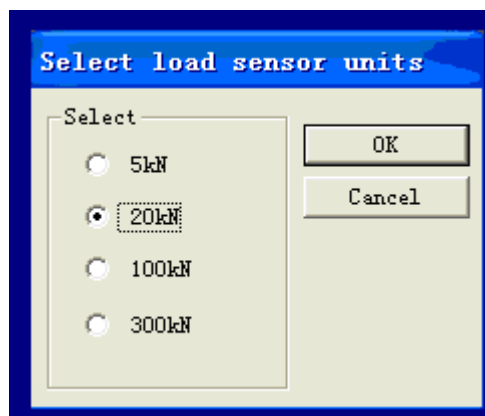
Headquarters: Floor 10<sup>th</sup> Tower A Century Fortune Plaza High Tech. Zone Jinan 250101, China.

Tel: +86-531-86510531(Ext.9) Fax: +86-531-86510535

[www.testingequipmentie.com](http://www.testingequipmentie.com)



Beside the clip-on Extensometer, TE software supports Long Travel Extensometer, Full Automatic Extensometer, video Extensometer, laser Extensometer, and it can be added eight Extensometers at most.



TE software supports four load cells.