



NANTONG JUGAO MACHINERY COLTD

ADD: LIBAO INDUSTRY PARK HAIAO COUNTRY JIANGSU PROVINCE CHINA POST

CODE:226600

TEL: 0086513-88283988 FAX:51388932366 MOBILE:008613222111178

E-MAIL: INFO@NTJUGAO.COM WWW.NTJUGAO.COM

Hydraulic guillotine technical data

A、 machine model name

1, Type:QC12K-12X3200



2、Brand: JUGAO. TOP RANKING QUALITY




WORLD CLASS

21,000 square meters
Workshops

WORLD CLASS ←

to ensure high-quality machines



WITNESS THE

STRENGTH

Monthly production
capacity reached 500

→ The strength witness

Industry-leading scale








360° PLEASANT EXPERIENCE

JUGAO
YOU CAN TRUST

360° Pleasant experience ←

Attentive service

NANTONG JUGAO




FOR MACHINES, WE ARE MORE PROFESSIONAL QUALITY

B、Performance

- The second generation of shear.
- Welded steel plate construction, hearing to eliminate stress, with high strength and good rigidity.
- Advanced integrated hydraulic system with excellent reliability quality.
- Rapidly, accurately and conveniently adjusting the blade clearance with the handwheel.
- The adjustable rake angle can minimize plate deformation
- As the cutting beam has been designed in inner-inclined structure, it is easy for plates to fall down and the accuracy of products can be also guaranteed.
- Shearing in sections, shadow-line cutting.
- Counter for the motorized back gauge.
- Plate-support of back of machine(optional).

C: Characteristics of our machine is superior to other Chinese machines

- Using the Gear pump. Other Chinese machines adopt the axial piston pump. Our pump with lower noise, higher quality and advanced technology.
- Using the energy accumulator for returning stroke. Other Chinese machine use the nitrogen cylinders, Our returning can avoid frequency nitrogen-padded, only need oil charge, and only need one time a year under normal operation. It's easier to operate, and efficiency is improved.
- Our machine with infrared protection device at back gauge area.
- Shearing machine and press brake with safety guard.

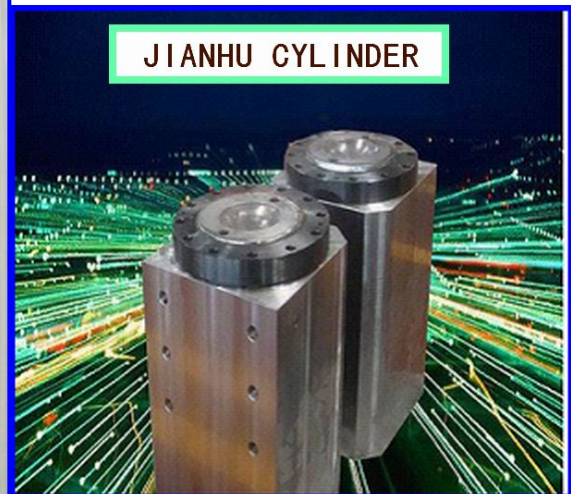
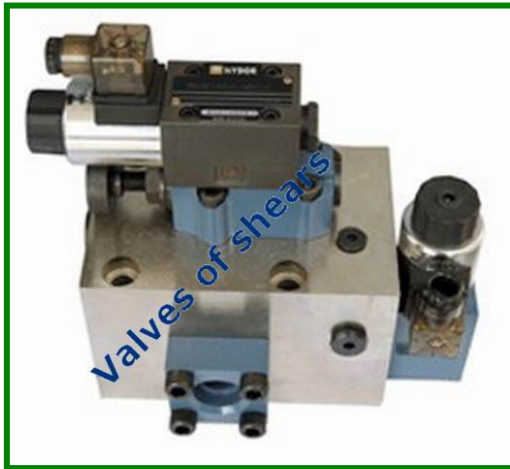
MORE COMPETITIVE PRICE.WELCOME TO OUR COMPANY

D、Technical data

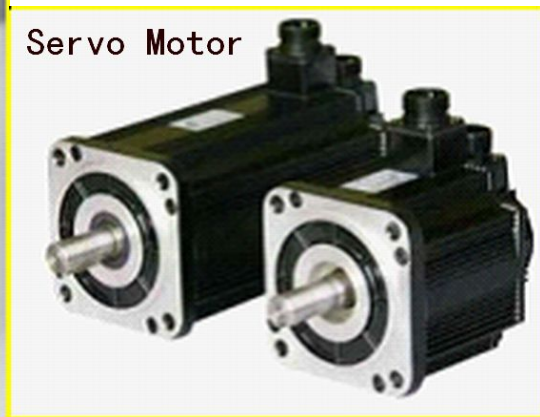
NO.	Name		Data	Unit	Remark
1	Max.cutting thickness		12	mm	MS
2	Max.cutting width		3200	mm	
3	Plate strength		≤450	N/mm²	
4	Shearing angle		1.30°		
5	Stroke times		12	min⁻¹	
6	Distance between columns		3150	mm	
7	Blade length		3250	mm	
8	Throat Depth		125	mm	
9	Back gauge range		20-800	mm	
10	Main motor	Model	Y132M-4		
		Power	18.5	KW	
		Speed	1460	rpm	
11	Axial piston pump	Model	40MCY14-1B		
		Flow rate	40	L/min	
		Pressure	12.5	MPa	
12	Max.pressure of hydraulic system		31.5	MPa	
13	Dimension	Length	3945	mm	
		Width	2227	mm	
		Height	2115	mm	

EXCELLENT QUALITY, RELIABLE

E: The main components supporting manufacturers (Opinions)



JUGAO MACHINERY,HEART SERVICES



Working power can be chosed

- 1.220V 50HZ 3phase
- 2.220V 60HZ 3phase
- 3.240V 50HZ 3phase
- 4.240V 60HZ 3phase
- 5.240V 50HZ 3phase
- 6.240V 60HZ 3phase
7. 200V 50HZ 3phase
- 8.200V 60HZ 3phase
- 9..380V 50HZ 3phase
- 10.380V 60HZ 3phase
- 11.400V 50HZ 3phase
- 12.400V 60HZ 3phase
- 13.415V 50HZ 3phase
- 14.415V 60HZ 3phase
- 15.440V 50HZ 3phase
- 16.440V 60HZ 3phase

This first-class quality assurance

F.Shearing machine operation Guide

Notice: Read marks on the machines before using.



Safety reminder



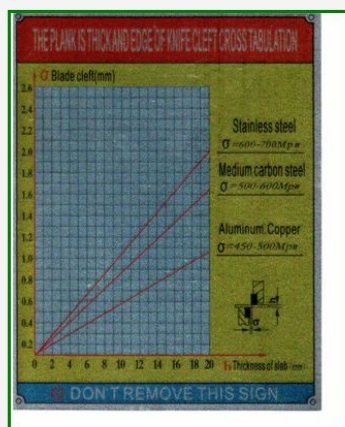
Read before using



Lubricating parts

MACHINE LUBRICATION INSTRUCTION DIAGRAM			
NO	Name of lubricating points	Relieving interval	Lubrication oil brand
1	Up and down point of Left and right return cylinder	16 Hours	Calcium grease ZG-3 GB491-85
2	Left and right point of the back gauge sliding rail	8 Hours	
3	Left and right point of the up and down return point	24 Hours	Mechanical oil N46GB443-84
4	Left and right point of the back clearance base sleeve	48 Hours	
5	Left and right cylinder piston point	8 Hours	1. Hydraulic oil N46GB443-84
6	Left and right cylinder cushion	8 Hours	

50% Calcium grease and 50% mechanical oil are mixed to use.
The graphite lithium base fat must be mixed with 20% mechanical oil to use.



Blade gap choosing

This first-class quality assurance

G..Control Pane



➔ **Control panel**



MORE COMPETITIVE PRICE. PLEASE CHOSE JUGAO



SHEARING MACHINE	X+, X-	-----	OUTPUT OF SYSTEMS X AXIS RISE AND REDUCE
	Count	-----	CUTTING TIMES INPUT
	CntOver	-----	CUTTING COUNT FULL OUTPUT
	Tin, Tout	-----	System input delay time relay trigger built-in outputSYSTEM
PRESS BRAKE	X+, X-	-----	INPUT DELAY TIME RELAY TRIGGER BUILT INPUT/OUTPUT
	Y+, Y-	-----	SYSTEM X AXIS ADD AND REDUCE
			SYSTEM Y AXIS ADD AND REDUCE

	-----	FUNCTION BUTTON.USED FOR CHANGING BETWEEN EVERY USER INTERFACE OR CANCEL PRESENT OPERATION AND RETURN THE MAIN INTERFACE
	-----	X BUTTON.PRESS THIS BUTTON ON MAIN INTERFACE,AFTER THE INDICATOR LAMP IS LIGHTED,NOW YOU CAN MOVE X AXIS
	-----	Y BUTTON.YOU CAN PRESS THIS BUTTON ON MAIN INTERFACE OF PRESS BRAKE WHEN THIS INDICATOR LAMP IS LIGHTED,NOW YOU CAN MOVE Y AXIS
	-----	T BUTTON.PRESS THIS BUTTON ON SHEARING MACHINE MAIN INTERFACE AND THEN ENTER THE SETTING INTERFACE OF TIME RELAY.
	-----	CONFIRM BUTTON.CONFIRM ANY OPERATION YOU DID
	-----	DELETE BUTTON.EMPTY PRESENT NUMBER
	-----	UP BUTTON.TURNING PAGES UP FOR READING PARAMETERS
	-----	DOWN BUTTON.TURNING PAGES DOWN FOR READING PARAMETERS.
~	-----	BUTTON FOR NUMBER ENTERING
	-----	DECIMAL POINT ENTERING

MORE COMPETITIVE PRICE.WELCOME TO OUR COMPANY

H: Machine standard accessories

1. Anchor bolt	4pcs
2. Nut	4pcs
3. Adjustment screw	4pcs
4. Washer	4pcs
5. Oil Gun	1pc
6. Nitrogen replenish tool	1pc

I: Warranty

100% warranty for one year.

J: Delivery time:

In 30days after seller receive the deposit.

K:Remittance Information

Account Bank: BANK OF CHINA LTD.,HAIAN SUB-BRANCH

SWIFT CODE: BKCHCNBJ95G

Bank Add: 18 Changjiang Rd(m), Haian, Nantong, Jiangsu, China 226600

Beneficiary: NANTONG JUGAO MACHINERY CO.,LTD.

A/C NO.: 535258233084

Note: The copyright of this document belong to NATNONG JUGAO

NANTONG JUGAO MACHINERY CO.,LTD(Techonogy Department)

Service Hotline: 008651388932366