



Another way to enjoy LONG profits from *short* runs.

370 & 371 3-Spindle Paper Drills

ROSBACK

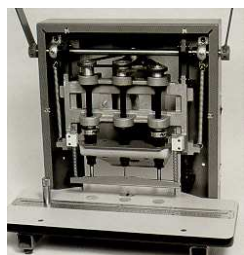
Rosback has been providing world-class bindery solutions since 1881. High quality is the advantage you get when you choose Rosback equipment. The versatile, dependable Rosback three-spindle drill puts increased drilling capacity and flexibility within reach for a variety of users, including commercial, in-plant and quick printers; offices; churches; schools; government facilities; mailrooms, etc. Another way to enjoy LONG profits from *short* runs.

PERFORMANCE FEATURES:

- 2-inch stock capacity
- Hand lever operation
- Rugged construction with sealed bearings for dependable operation
- Locking back gage
- Vertical head adjustment
- Fast setup & quick change-over
- Automatic chip ejection
- Heavy-duty 3/4 HP motor



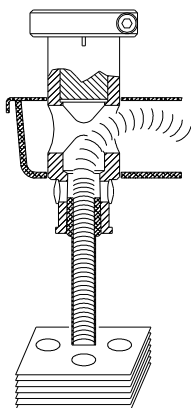
The Model 371 paper drill converts easily to single-hole drilling. The 371's self-locking table stops expand the capability of alternate drilling patterns for increased flexibility of operation.



Drill a full 2-inches of stock in a single stroke with extreme speed and accuracy. Locking back gage make margin adjustments quick and easy. Heavy-duty 3/4-hp motor powers the spindles with a poly-v-belt drive and has sealed bearings for dependable operation.

370/371 STANDARD EQUIPMENT:

- 3 – 1/4" Paper Drills
- 3 – Drill Blocks
- 1 – Clean-out Pin
- 1 – Drift
- 1 – Drift Lever
- 1 – Drill Lubricant Stick
- 1 – Tool Kit



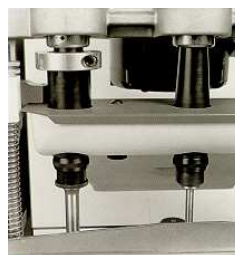
Automatic chip ejection goes directly into enclosed removable chip tray.



Large table increases work area. An optional metal floor stand & table extensions are also available.

AVAILABLE OPTIONS & ACCESSORIES:

- Drill Stand (350-A-014)
- Table Extensions (350-A-015) - (370 only)
- Drill Sharpener (S-1295)
- Drill Blocks
- Drill Lubricant Sticks
- Complete range of drill sizes from 1/8" to 1/2"



Vertical head adjustment is accomplished simply. A single adjustment of the outside drills makes it possible to use drills of different lengths. High-compression "hold-down" and stripper bar along with a fixed 4-1/4" (108mm) drill spacing provides perfect accuracy and eliminates spacing errors.

AVAILABLE DRILL SIZES:

- S-1309
1/8 dia. (3.2mm)
- S-1308
5/32 dia. (4mm)
- S-1307
3/16 dia. (4.8mm)
- S-1306
7/32 dia. (5.6mm)
- S-1268
1/4 dia. (6.3mm)
- S-1304
9/32 dia. (7.1mm)
- S-1303
5/16 dia. (7.9mm)
- S-1302
11/32 dia. (8.7mm)
- S-1301
3/8 dia. (9.5mm)
- S-1573
13/32 dia. (10.3mm)
- S-1574
7/16 dia. (11.1mm)
- S-1575
1/2 dia. (12.7mm)

370/371 PAPER DRILL SPECIFICATIONS

	370	371
Drilling		
Max Capacity*	2" (51 mm)	2" (51 mm)
Max Back Margin	2-1/2" (63 mm)	1-1/4" (32 mm)
Max Side Margin	12" (30 cm)	18-1/4" (46 cm)
Fixed Distance Between Holes	4-1/4" (108 mm)	4-1/4" (108 mm)
Dimensions		
Depth	21" (53 cm)	21" (53 cm)
Width	28" (71 cm)	39-3/4" (101 cm)
Height	38" (97 cm)	38" (97 cm)
Weights		
Net	140 lbs. (64 kg)	150 lbs. (68 kg)
Shipping	159 lbs. (73 kg)	169 lbs. (77 kg)
Export	220 lbs. (100 kg)	235 lbs. (107 kg)
Electrical		
Standard*	120 vac, 50/60 Hz, 1Ph, 15 amp	
Optional	220 vac, 50/60 Hz, 1Ph, 15 amp	
Motor	3/4 Hp 10.6 amps	

*Smaller drill diameters have less capacity

Design Specifications Subject To Change Without Notice

ROSBACK CO.

125 HAWTHORNE AVE., ST. JOSEPH, MI 49085 USA

Phone: (269) 983-2582 * Fax: (269) 983-2516

Internet: www.rosbackcompany.com * E-mail: Sales@RosbackCompany.com

Your Dealer: