

LR Series

World
lasers*



LR4832

laser cutter / engraver

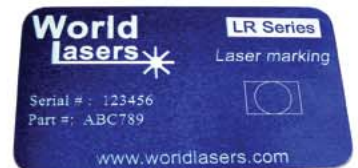
- 48" x 32" Work Area
- 80 Watt Laser
- Touch Screen
- Coaxial Air Nozzle
- Sharp 1000 DPI Resolution
- Fast 60 ips
- Easy to Operate
- Affordable
- Quality Service & Support
- Toll-Free Technical Support

LR4832

The LR4832 is a reliable laser engraver and cutter with an affordable price tag for the technology. The laser software is very simple and can import popular file formats from your favorite design software.

Laser engraving has many applications including identification, marking, signage, and decoration. Engrave photos and logos on a variety of materials.

Commonly processed materials include acrylic, anodized aluminum, ceramic, cloth, coated metals, cork, delrin, fiberglass, glass, leather, marble, matte board, melamine, mylar, paper, pressboard, rubber, wood, and wood veneer.



* Identification Tag (Anodized Al)



* Engraved Photograph (Marble)



* Mixed Vector and Raster (Wood)



www.worldlasers.com

LR Series

World
Lasers*



LR4832

laser cutter / engraver

FEATURES

Product	Enclosed laser engraver/cutter
Work Area	48" x 32" x 16" or 48" x unlimited x 5/8" 16" Power table height adjustment
Laser	80 Watt CO ₂ 10.6 micron 2" Focus lens standard (others optional)
Speed	50 ips
Resolution	Adjustable to 1000 dpi
Interface	USB port to user PC Touch screen panel On board program storage
Compatibility	Windows 2000/XP CorelDRAW (bmp, dxf) Vector, Raster, mixed mode
Warranty	One year parts and labor. Excludes consumables.
Includes	Communications cable, casters, software, cooling unit, user manual
Enclosure size	68" x 48" x 42" (W, D, H)
Weight	485 lbs
Power	110-120 V 50-60 Hz 15 A
Options	Vector cutting table, Rotary attachment, Exhaust blower, Air compressor

Due to World Lasers commitment to continual improvement, specifications are subject to change.

World Lasers, Inc.

40 Aero Road, Bohemia, NY 11716

(800) 648-5164 (484) 359-8906

www.worldlasers.com

