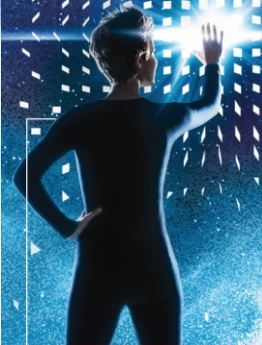


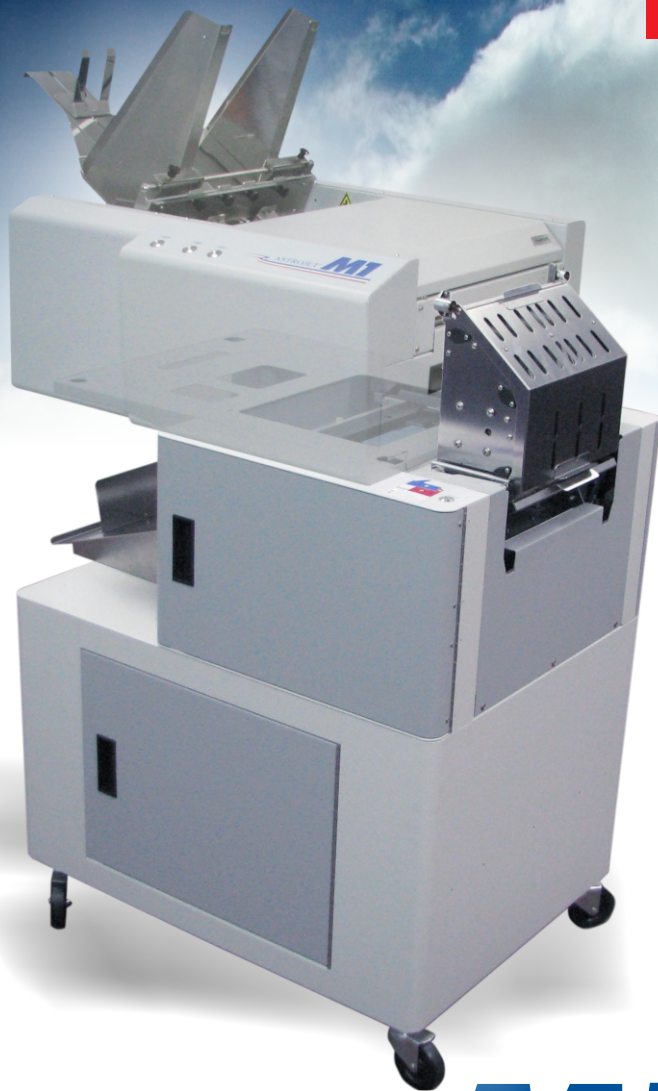
Hall 5, Booth C24



**touch
the
future**

May 31 -
June 10, 2016

Düsseldorf/
Germany



ASTROJET™

M1DX

Powered by
memjet

Converts your standard M1 Printer into a full color Duplex Printer! Print quality up to 1600 dpi for sharp graphic images in full process color. Provides the same print speed as the standard M1 in both single and double-sided print modes, in process color or monochrome. **M1DX Duplex Printer Includes:** M1DX Print Engine Assembly in a floor-standing rolling cabinet, M-Series duplex firmware/printer driver and User Interface Toolbox. (M1 Printer sold separately.)

Product Highlights:



Designed and manufactured in U.S.A by:
Astro Machine Corp.,
630 Lively Blvd.
Elk Grove Village 60007, Illinois U.S.A.
Phone (847) 364-6363 Fax (847) 364-9898
www.astromachine.com

- Fast, full color one or two-sided printing
- Fast, easy installation. No special tools required
- Economical. Very low cost-per-copy
- Versatile, flexible! Switch from one to two-sided printing in seconds
- Same print speed for one or two-sided printing
- Prints on envelopes, single sheets and card stock
- Special firmware and User Interface synchronizes the two print engines for fast, efficient printing
- Retains all the functionality of the standard M1 Printer

Specifications:

PRINT CARTRIDGE	Memjet® Replaceable Printhead	PC INTERFACE	USB 2.0
SPEED	Up to 3600 letter size pages/hour (6 ips & 12 ips speeds are the same for single-sided and double-sided printing)	NETWORK INTERFACE	Ethernet Port
PRINT QUALITY (Dots Per Inch)	Best: 1600 x 1600 DPI Normal: 1600 x 800 DPI	COUNTERS	Permanent lifetime and job counter is viewable in M-Series Toolbox
IMAGE AREA	8.5" x 30" (216 mm x 762 mm)	DUTY CYCLE	350,000 letter-sized/A4 sheets per month
FONTS	All TrueType fonts available on PC	DIMENSIONS	M1: 20" W x 24" L x 17.25" H (50 cm x 61 cm x 44 cm) M1DX (w/o M1 mounted): Double-side mode: 28.25" L x 33" H x 21.5" W (71.8 cm x 84 cm x 54.6 cm) Single-side mode: 48" L x 33" H x 21.5" W (122 cm x 84 cm x 54.6 cm) M1DX (w/M1 mounted): Double-side mode: 39" L x 54.5" H x 21.5" W (99 cm x 138.4 cm x 54.6 cm) Single-side mode: 48" L x 54.5" H x 21.5" W (122 cm x 138.4 cm x 54.6 cm)
MEDIA SIZE (Double-Sided)	Minimum: 3" x 5" (76 mm x 127 mm) Maximum: 9" x 17" (228.6 mm x 431 mm)	WEIGHT	M1: 75 lbs. (34 kg.) M1DX (w/o M1 mounted): 72 lbs. (32.6 kg) M1DX (w/M1 mounted): 146 lbs. (66.5 kg)
MEDIA SIZE (Single-Sided)	Minimum: 3" x 4.2" (76 mm x 107 mm) Maximum: 9.5" x 17" (241 mm x 431 mm)	ELECTRICAL	115-240 VAC, 50/60 Hz
MEDIA THICKNESS	Minimum: 0.004" (0.1 mm) Maximum: 0.020" (0.5 mm)	OPTIONS	Conveyor/Stacker, Conveyor Drop Tray, Printer Drop Tray
FEEDER CAPACITY	Up to 500 single sheets or #10 envelopes		
INK	Water-based Ink. Five 250 ml Ink Reservoirs (CMYKK)		
INK MONITOR	Viewable in M-Series Toolbox		
SOFTWARE	Windows™ Printer Drivers for Windows™ 8, 8.1, 10. RIP available		
DIAGNOSTICS	Viewable in M-Series Toolbox		
FIRMWARE UPDATE	Flash update through M-Series Toolbox		

Specifications are subject to change without notice.

Easy to install



Switch from duplex to simplex printing in seconds!



Quick access for maintenance and service



ASTROJET™ M1DX Powered by **memjet.**

Designed and manufactured in U.S.A by:
Astro Machine Corp.,
 630 Lively Blvd.
 Elk Grove Village 60007, Illinois U.S.A.,
 Phone (847) 364-6363 Fax (847) 364-9898
www.astromachine.com



Distributed by: