



Washing



Cutting



Laminating



Handling



Insulating



Software

Ultra Series™

Architectural Glass Cutting System

The Ultra Series™ is specifically designed for the high-speed, high-volume glass cutting requirements of large glass fabricators and window and door manufacturers.

MagnaDrive™ System —

patented design provides high-speed cycle times while maintaining superior levels of precision

Z95 Superhead™ —

provides accurate cutting head pressure control and servo-controlled height adjustment to improve cutting cycle time, and reduce operator intervention

Maintenance-Free AC Digital Motors —

minimize downtime

Butler Touchscreen Operator Interface —

a simplified control system for trouble-free operation

CNC and Digital Servo Drives

— deliver precise positioning and smooth operation

Unlimited Contour Cutting Capabilities

Maximum Glass Size	Glass Thickness Range	Cut Tolerance	Cutting/Positioning Speed	Bridge/Head Drive
72" x 96"				MagnaDrive™ Linear Motor System
108" x 144"	2.21–19.05 mm	± 0.009"	Up to 9450 IPM*	
130" x 204"				



Ultra Series™

Architectural Glass Cutting System

KEY FEATURES

High Speed Cutting



Precision Processing



American Made



Customer Service



AVAILABLE OPTIONS:

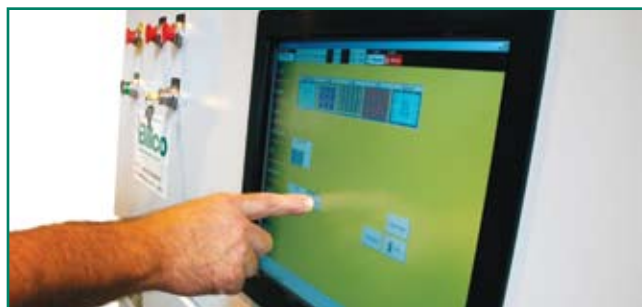
- ❖ Edge Deletion
- ❖ Laser Marking Technology
- ❖ Automatic Cutting Wheel Changing System



Automatic Cutting Wheel Changing System

SOFTWARE OPTIONS:

- ❖ BOSS — Billco Optimization Software System
- ❖ BOSS DNC — Interfacing Software for 3rd party software suppliers



SUPPORTING EQUIPMENT:

- ❖ Free-Fall Systems — Manual or Automatic
- ❖ Tilt Loading Conveyors
- ❖ Automatic Unstacking Machines
- ❖ Air Float Load & Breakout Tables
- ❖ Crane Loading Systems
- ❖ Storage Systems — Standard or Compressed Layout



*IPM (Inches per minute)

Product shown without all required safety features.
Ultra Series US Patent No. 5,791,971

397 1/08

Billco Manufacturing, Inc.
100 Halstead Blvd., Zelienople, PA 16063 USA
Phone: 724.452.7390 • Fax: 724.452.0217
sales@billco-mfg.com