



**DIVERSITECH**  
Air Pollution Solutions

**DOWNDRAFT**  
Tables & Booths

## DD 2X4

PORTABLE DOWNDRAFT TABLE



\* Selected Models



The DD 2X4 is a portable, reliable, and easy-to-use downdraft table for industrial duty applications. Now any fumes, smoke, or dust from your shop activities can be captured right as they are produced, before compromising your indoor air quality.

The table comes fitted with multi-stage spark arrestance baffles, industrial swivel casters, and a push-button reverse-pulse filter cleaning system to help reduce maintenance requirements. Choose from a 1.5HP 1500CFM single phase [120V] motor, or 3.0HP 2600CFM three phase [230/460/575V] for higher capture face velocity. Single phase models include a 15' power cord for plug & play convenience. Many options and accessories are available for the DD 2X4 downdraft table. This table can be built-to-order in almost any configuration.

Flexible, all-in-one, downdraft solution for dust, smoke, or fumes produced from welding, grinding, deburring, cutting, sanding, finishing, soldering, painting, or mixing.

### Features:

- Flexible 32" x 48" worksurface
- High capture face velocity (250fpm)
- Multi-stage spark arrestance baffling
- Industrial swivel-casters
- On-demand, reverse pulse cleaning system

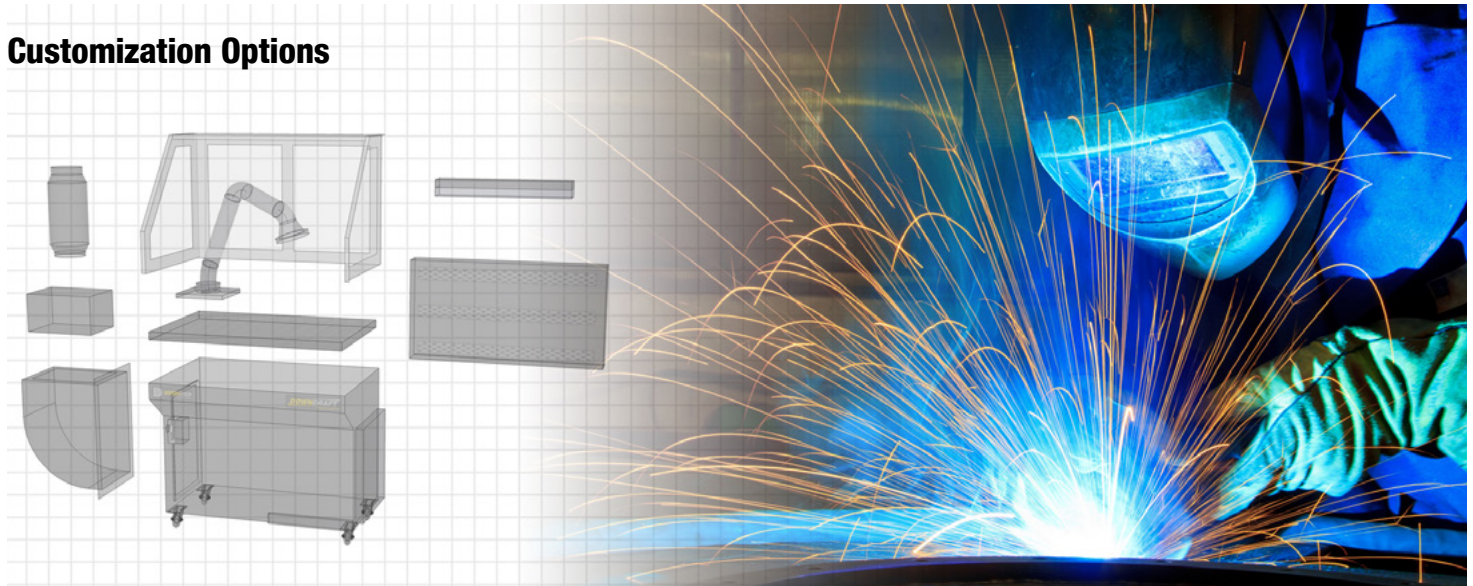
### Benefits:

- Simple to use, plug & play design
- Ultra-small footprint & no permanent ducting
- Complies with OSHA guidelines for safe capture of dust, smoke, and weld fumes



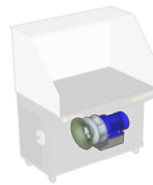


## Customization Options



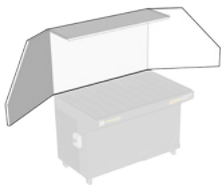
### Lexan Side & Back Walls

Contain dust and fumes high over your table surface, enables users to trap particulate using 30" high see-through lexan side and back panels.



### 3HP Motor

The 3 Phase 3HP motor doubles the suction to 2600 CFM, allowing you to properly ventilate a backdraft hood or overcome the pressure from a HEPA or carbon filter.



### Hinged Side & Back Walls

Provide extra space for your work pieces, allow longer parts room to overhang your downdraft table by hinging out the side walls.



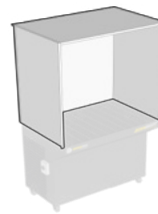
### Side Stack Silencer

Reduce the sound level of your air filtration unit. Silences noise in a duct muffler and projects it above the operator's hearing zone.



### Backdraft Hood

Capture dust and fumes high above your table surface, enables users to draw particulate back away from the operator when operating 12" or more above the downdraft work surface.



### 48" Booth Walls

Fully enclose your work area with 48" high side and back walls with a top plate. The clean air workstation booth also comes with a backdraft hood and dust-proof light kit.



### Dust-proof Light Kit

Illuminate your workspace and brighten your operations, the dust-proof light kit provides lighting without the risk of damaging the bulbs.



### Mini-helic Gauge

Mini-helic gauge measures pressure drop over the filters to indicate when the filters must be cleaned or replaced.

## Primary Filters

### NANOTECH XV

MERV 15 efficient cartridge filter captures particles at the submicron level, and surface-loading technology allows dust to be easily dislodged during cleaning with compressed air.



S-2X4-20NF

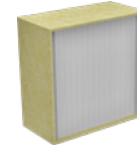
**EFFICIENCY:**  
**FILTER MEDIA:**  
**MEDIA AREA:**  
**COATING:**  
**END CAP:**  
**CLEANING METHOD:**  
**MAX TEMP:**  
**FLANGE:**

MERV 15  
NANOFIBER  
320 SQ.FT.  
FIRE RETARDANT  
OPEN/CLOSED  
COMPRESSED AIR  
180° F / 82° C  
NONE

## After Filters

### HEPA

MERV 17 efficient cartridge filter captures particles at the submicron level, it provides the highest level of filtration efficiency 99.97% at 0.3 micron.



S-HEP-242412

**EFFICIENCY:**  
**FILTER MEDIA:**  
**MEDIA AREA:**  
**COATING:**  
**END CAP:**  
**CLEANING METHOD:**  
**MAX TEMP:**  
**FLANGE:**

MERV 17  
HEPA  
24" x 24" x 11½"  
NONE  
OPEN/CLOSED  
DISPOSABLE  
175° F / 82° C  
NONE

### POLYTECH XI

High strength, high efficiency (MERV 11) cartridge filter made from 100% spun-bond polyester that lowers costs, by allowing for water-based cleaning of captured contaminants.



S-2X4-0002

**EFFICIENCY:**  
**FILTER MEDIA:**  
**MEDIA AREA:**  
**COATING:**  
**END CAP:**  
**CLEANING METHOD:**  
**MAX TEMP:**  
**FLANGE:**

MERV 11  
SPUNBOND POLY  
169 SQ.FT.  
FIRE RETARDANT  
OPEN/CLOSED  
AIR + WATER WASH  
180° F / 82° C  
NONE

### CARBOTECH 50

Reusable steel canister filled with 50lbs of activated carbon to filter VOC fumes and odors. Double the filter life by flipping the canister top-to-bottom, allowing for adequate contaminant distribution through the media.



S-CCX-50R

**WEIGHT:**  
**FILTER MEDIA:**  
**MEDIA THICKNESS:**  
**COVER:**  
**END CAP:**  
**CLEANING METHOD:**  
**MAX TEMP:**  
**FLANGE:**

50LBS  
CARBON  
2.6"  
3/4" ANTIBACTERIAL  
TWIST LOCK REMOVABLE  
NONE  
175° F / 80° C  
NONE

## Specifications

Product No.	Airflow (CFM)	Face Velocity (FPM)	Motor (H.P.)	Pre Filter Type	Primary Filter Type	After Filter Type	Input Power (v/p/hz)	F.L.A (amps)	Noise @5ft. (dB)	Power Cord (ft.)	Weight	
											Gross (lbs.)	Net (lbs.)
WELDING, GRINDING, DEBURRING KIT												
DD-2X4-015N1-WGD	1500	340	1.5	Metal-Mesh	Nano-Fiber	—	120v/1/60Hz	14.2	75dB@ 5 ft.	15	495	310
DD-2X4-030N2-WGD	2600	450	3.0	Metal-Mesh	Nano-Fiber	—	230v/3/60Hz	9.6	77dB@ 5 ft.	—	535	340
DD-2X4-030N4-WGD	2600	450	3.0	Metal-Mesh	Nano-Fiber	—	460v/3/60Hz	4.8	77dB@ 5 ft.	—	535	340
DD-2X4-030N5-WGD	2600	450	3.0	Metal-Mesh	Nano-Fiber	—	575v/3/60Hz	3.9	77dB@ 5 ft.	—	535	340
CLEAN AIR WORK STATION												
DD-2X4-030N2-CAW	2600	450	3.0	Metal-Mesh	Nano-Fiber	—	230v/3/60Hz	9.6	77dB@ 5 ft.	—	595	400
DD-2X4-030N4-CAW	2600	450	3.0	Metal-Mesh	Nano-Fiber	—	460v/3/60Hz	4.8	77dB@ 5 ft.	—	595	400
DD-2X4-030N5-CAW	2600	450	3.0	Metal-Mesh	Nano-Fiber	—	575v/3/60Hz	3.9	77dB@ 5 ft.	—	595	400
VOC & PAINT KIT												
DD-2X4-030S2-SPR	2600	450	3.0	Paint arrestor	Poly	Activated Carbon	230v/3/60Hz	9.6	77dB@ 5 ft.	—	545	350
DD-2X4-030S4-SPR	2600	450	3.0	Paint arrestor	Poly	Activated Carbon	460v/3/60Hz	4.8	77dB@ 5 ft.	—	545	350
DD-2X4-030S5-SPR	2600	450	3.0	Paint arrestor	Poly	Activated Carbon	575v/3/60Hz	3.9	77dB@ 5 ft.	—	545	350
PLASMA CUTTING KIT												
DD-2X4-030N2-PLA	2600	450	3.0	Gravel Bed	Nano-Fiber	—	230v/3/60Hz	9.6	77dB@ 5 ft.	—	545	350
DD-2X4-030N4-PLA	2600	450	3.0	Gravel Bed	Nano-Fiber	—	460v/3/60Hz	4.8	77dB@ 5 ft.	—	545	350
DD-2X4-030N5-PLA	2600	450	3.0	Gravel Bed	Nano-Fiber	—	575v/3/60Hz	3.9	77dB@ 5 ft.	—	545	350

### Welding, Grinding & Deburring Kit:

- Side and back walls
- Metal mesh pre-filter
- Grounding lug



### Plasma Cutting Kit:

- 2" high steel bar grating
- Slag collection baffle with 3/4" gravel
- Metal mesh pre-filter



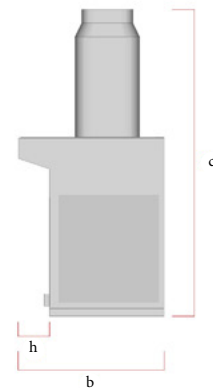
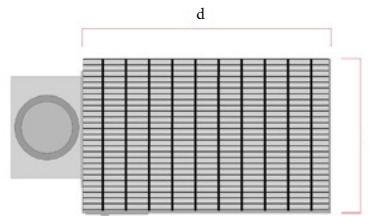
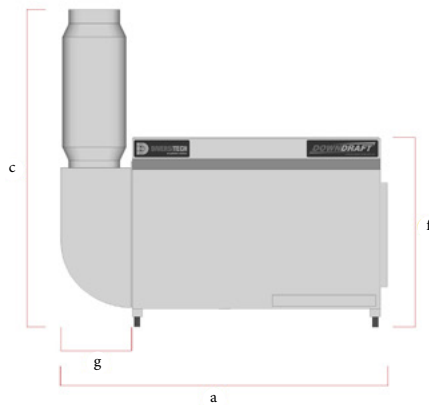
### VOC & Paint Kit:

- Side and back walls
- Paint arrestor pre-filter
- Reversible carbon canister afterfilter



### Clean Air Workstation:

- Side and back walls (48" high w/top cover)
- Dust & vapor proof light kit
- Backdraft hood



## Dimensions \*\*

Model	Exhaust Diameter (in.)	Footprint (in.)			Worksurface (in.)		Table Height [f]	Net Weight (lbs.)	Exhaust [g]	Overhang [h]
		Width [a]	Height [C]	Length [b]	Width [d]	Length [e]				
Downdraft Tables, Standard Size										
DD-2X4 1.5 HP	---	49.5	39	32.5	48	32	39.5	300	10.5	8
DD-2X4 3 HP	8" x 1	60	69.5	32.5	48	32	39.5	300	10.5	8
Downdraft Tables, extended overhang										
DD-2X4-EO 1.5 HP	---	49.5	39	38.5	48	38	39.5	310	10.5	12
DD-2X4-EO 3 HP	8" x 1	60	69.5	38.5	48	38	39.5	310	10.5	12

\*\* Product dimensions are based on base-models and may vary depending on selected product features. Please contact us for an accurate shipping quote.

### HEAD OFFICE

1200 55<sup>th</sup> Avenue  
Montreal, QC H8T 3J8

### DISTRIBUTION CENTERS

**CANADA** Montreal, QC Toronto, ON  
**UNITED STATES** Trenton, NJ Chicago, IL Reno, NV

### CONTACT US

Toll Free: 1-800-361-3733  
info@diversitech.ca