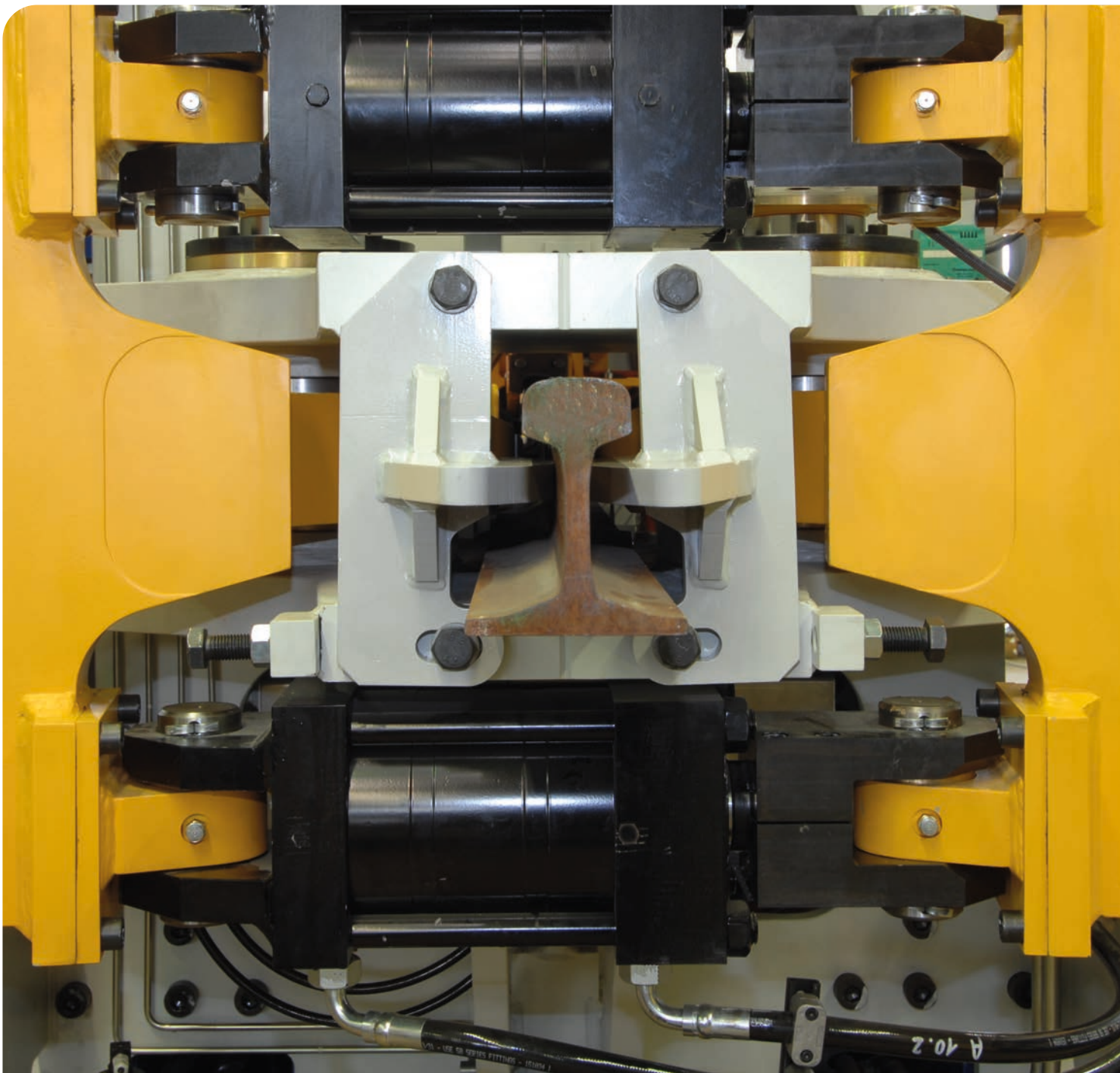
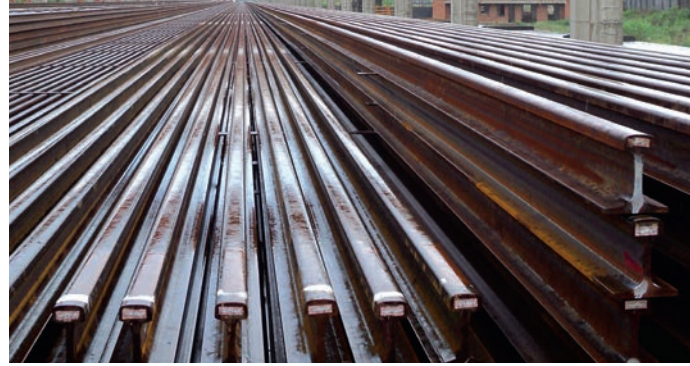


Stationary Flash Butt Welding Systems for Rails System GAAS80 and GAA100



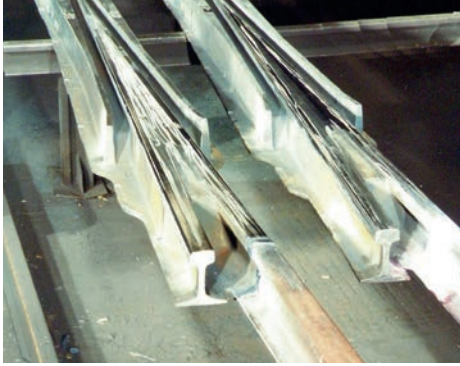


Stock of long welded rails (LWR) with 500 m length

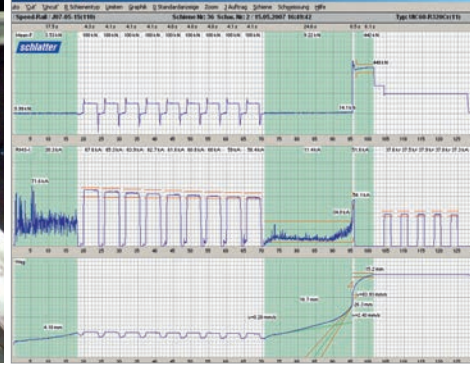
Stationary welding systems for the economic welding of rails

The system GAAS80 is used in fixed welding plants for joining short rails to long welded rails. It forms the core item in the welding plant. The system GAA100 is used for welding of turnout components such as welding of rails to frogs or for switchblades. Schlatter machines are very rigid in design and are well known for their high productivity, reliability and long life. Many machines from the first series, commissioned roughly 30 years ago, are still in daily use.





Welding of turnout components



Schlatter Weld Analyzer

System GAAS80

The GAAS80 welds short rails of any length to long welded rails up to 500 m lengths and even longer. Its main feature is the exact lateral alignment of the running edge and vertical alignment of the running surface. The web clamping device is independent from the electrodes and it ensures the rails do not slip during upsetting. Directly after completion of the welding process the integrated deburring device removes the burr.

System GAA100

The GAA100 is used for welding components in turnout manufacturing plants. The wide welding range allows high quality welding of nearly all types of components used for turnouts. The four clamping units with 1000 kN force each ensure that the parts do not slip during upsetting. Worldwide the GAA100 successfully welds high resistant manganese frogs with rails with the intermediate stainless steel insert.

Control system and Schlatter Weld Analyzer

The control system of stationary machines comprises the function control (PLC), the weld processor and the Schlatter Weld Analyzer. The latest generation of the Schlatter Weld Analyzer contributes considerably to the achievement of constant high-quality welds. During the whole welding process the Weld Analyzer monitors the three main parameters force, current and travel and displays them on the screen during welding. Directly after welding its analysis shows if all parameters were within the preset tolerances; it then stores the weld file in the PC.



A reliable partner in plant construction

The Schlatter Group is a world leader in plant manufacturing for resistance welding systems and weaving machines for special applications. With longstanding expertise in industrial engineering, innovative flair and a reliable customer service, the Group, which is listed in Switzerland, provides production systems offering high performance and quality.



Core competence

Schlatter has almost 100 years of expertise in plant construction, customer-oriented solutions, a world-wide presence and more than 400 dedicated employees. The combination of expertise in welding and systems technology makes Schlatter a reliable partner in plant construction.

Segment resistance welding

Schlatter has acquired unique experience in the development and production of reinforcing and industrial mesh welding systems and mobile and stationary rail welding machines.

Weaving segment

Under the brand Jäger, the Schlatter Group provides state-of-the-art weaving and finishing machines for the paper machine fabric industry.

Contact

Professional contacts for sales, technical support, customer service and administration are available world-wide in the Group's companies and at selected representatives/agents of the Schlatter Group. You can find the relevant contact data on our Internet site www.schlattergroup.com.

Schlatter Industries AG



Brandstrasse 24
8952 Schlieren | Switzerland
T +41 44 732 71 11
F +41 44 732 45 50
www.schlattergroup.com